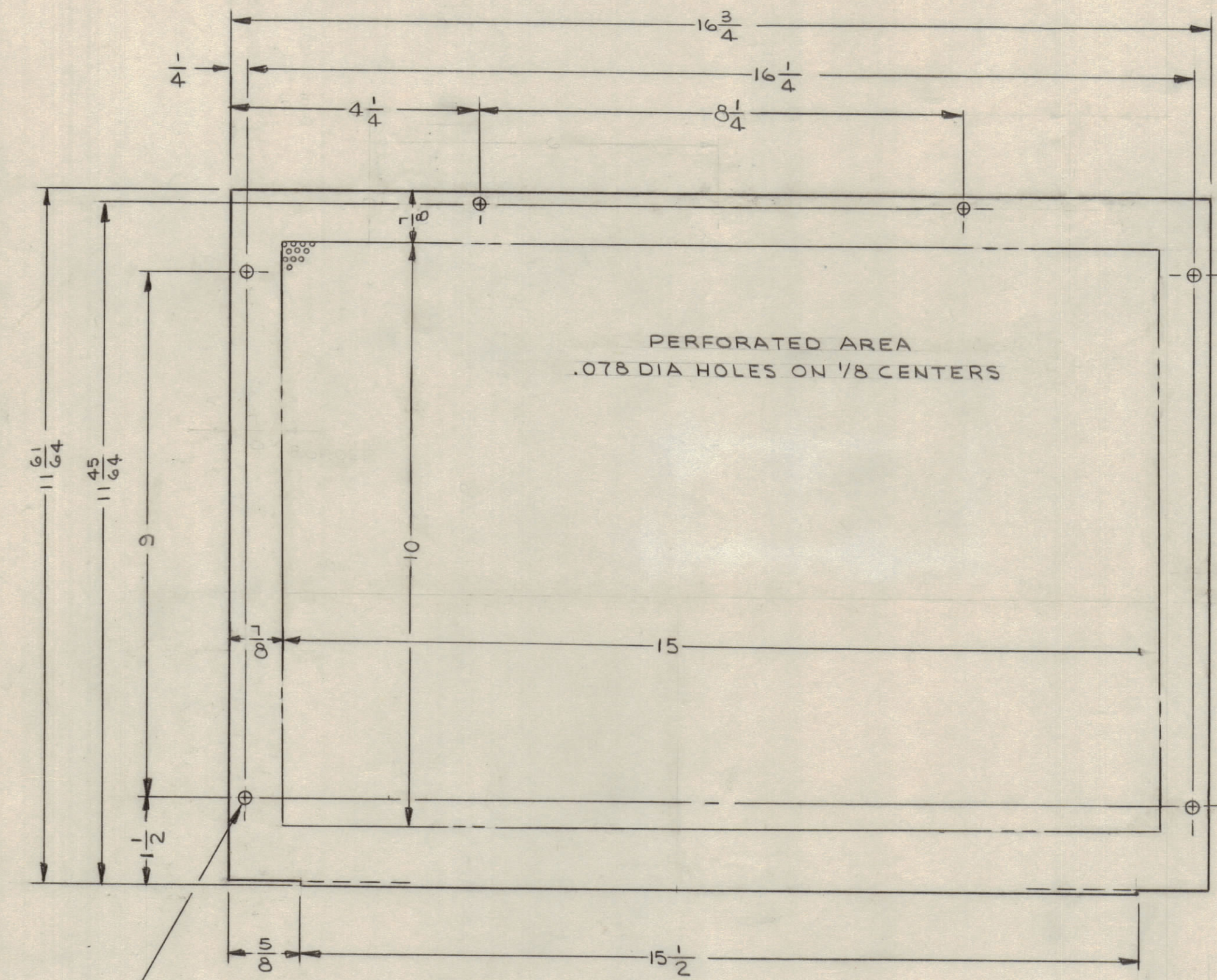
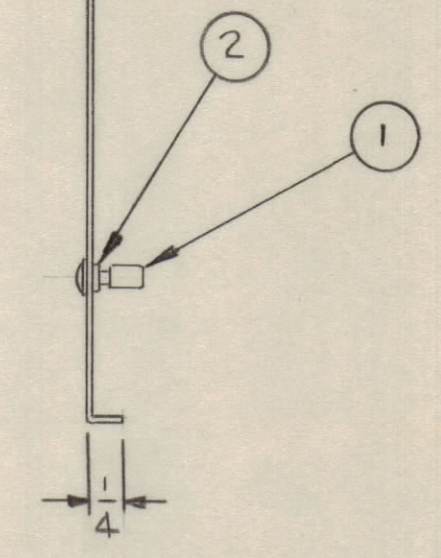


REVISIONS							
ZONE	SYM	DESCRIPTION	DATE	E.M.N. NO.	DRAFT	CHKD	APPD
G6	X1	4 1/4 DIM. WAS 2 3/8 ; 8 1/4 WAS 12.	12/28/65		JL		JPC
G5	Ø	ORIGINAL RELEASE FOR PRODUCTION	4-11-66	Ø	LPL		JPC



1/4 DIA HOLE
6-REQ'D

MARK IN 1/8 HIGH GOTHIC
TMC PT. NO. W/LATEST REV. LETTER



NOTE :-
HARDWARE TO BE SUPPLIED & ASSEMBLED
BY TMC.

UNLESS OTHERWISE SPECIFIED:
1. USE MATERIAL THICKNESS FOR MAXIMUM RADIUS ON ALL BENDS
2. ALL ANGULAR BENDS 90 DEGREES
3. REMOVE ALL BURRS AND SHARP EDGES

QTY./UNIT	2	RTPH-1	AXG17
SCALE	1/2	MODEL USED ON	ASS'Y. NO.
THE CONTENTS OF THIS DRAWING ARE THE EXCLUSIVE PROPERTY OF THE TECHNICAL MATERIEL CORP. ITS UNAUTHORIZED USE OR REPRODUCTION IN WHOLE OR IN PART IS STRICTLY FORBIDDEN.			

REQ'D.	ITEM	PART NUMBER	DESCRIPTION	SYMBOL
6	2	FS109-3	RING, RETAINING	
6	1	FS110-1	STUD, TURNLOCK	

F.E. EATON LIST OF MATERIAL SK3230-5

MATERIAL	.051 THK ALUMINUM 5052-H32	THE TECHNICAL MATERIEL CORP. MAMARONECK, NEW YORK		
FINISH	YELLOW IRIDITE PER SPEC S404	TITLE COVER - TOP & BOTTOM		

DRAWN	J. LESHINSKI	DATE	10/27/65	FINAL APPROVAL	[Signature]	DATE	4/7/66
CHECKED	[Signature]	DATE	4/5/66				
ELECT. DES.		DATE	4/5/66	MS4811		Ø	
MECH. DES.		DATE	4/7/66	SHEET		REV. LTR.	

NOTES

MS4811