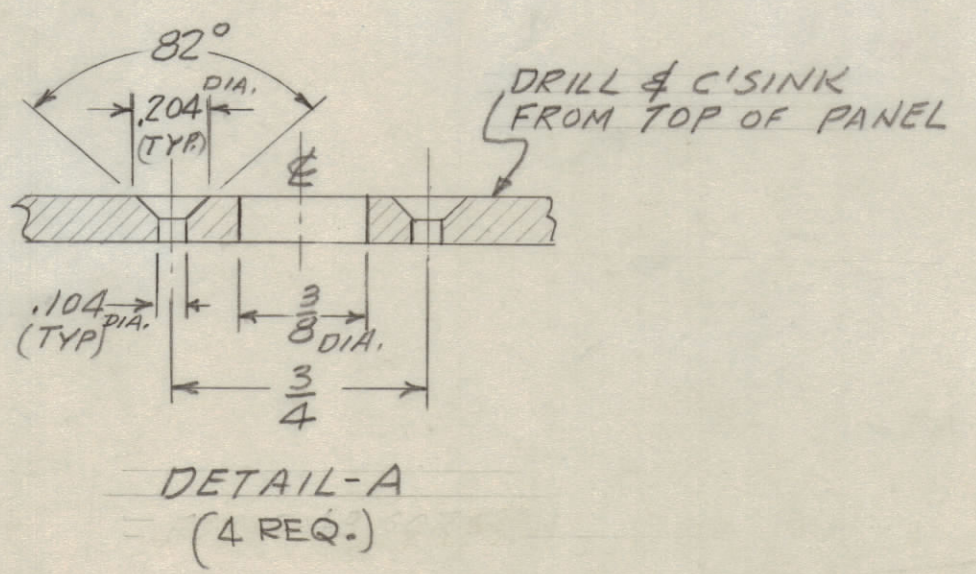
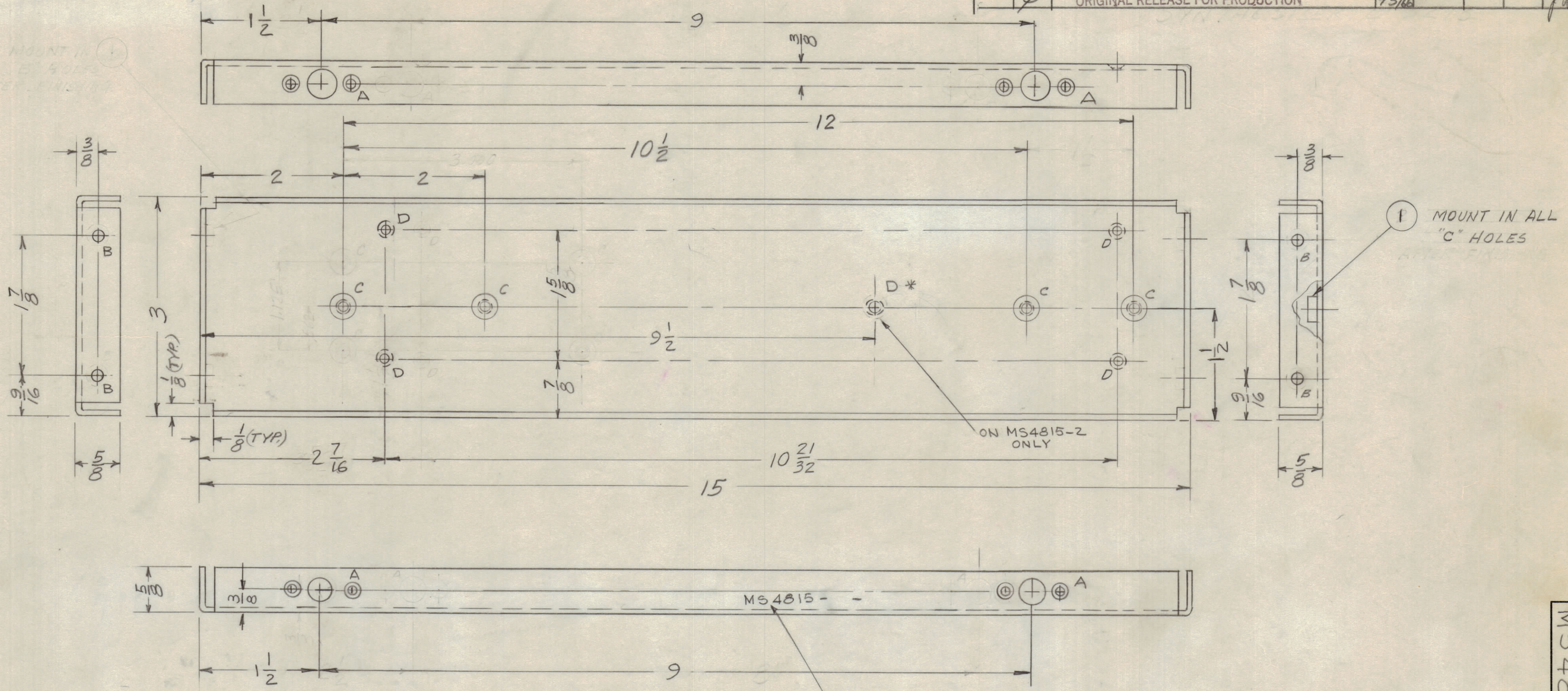


REVISIONS							
ZONE	SYM	DESCRIPTION	DATE	E.M.N. NO.	DRAFT	CHKD	APPD
	Ø	ORIGINAL RELEASE FOR PRODUCTION	9/3/66				



HOLE LEGEND		REQ
HOLE	DESCRIPTION	-1 -2
A	SEE DETAIL	4 4
B	11/64 DIA	4 4
C	.250 -.253 DIA.	4 4
D	.147 DIA. & 82° C'SINK TO .284 DIA. FACE (REAR)	4 5

TMC PART No	DESCRIPTION	REQ.	REMARKS
MS4815-1	LEFT SIDE (AS SHOWN)	1	DELETE (*) "D" HOLE
MS4815-2	RIGHT SIDE (OPP. HAND)	1	ADD "D" (*) HOLE

- UNLESS OTHERWISE SPECIFIED:
1. USE MATERIAL THICKNESS FOR MAXIMUM RADIUS ON ALL BENDS
 2. ALL ANGULAR BENDS 90 DEGREES
 3. REMOVE ALL BURRS AND SHARP EDGES
 4. MOUNT INSERTS AFTER FINISHING

QTY./UNIT	MODEL USED ON	ASS'Y. NO.
SCALE	CODE	
NOT TO SCALE	A	

4	1	NT 129-1032-4	NUT, PLAIN, SPLINE	C
POSE LIST OF MATERIAL SK3226 MS 2				
MATERIAL .063 ALUMINUM 5052-H 32			THE TECHNICAL MATERIEL CORP. MAMARONECK, NEW YORK	
FINISH 5404 YELLOW IRIDITE			TITLE PLATE, RIGHT & LEFT SIDE	
DRAWN G.D.L.	DATE 12-17-65	FINAL APPROVAL	DATE 2/4/66	
CHECKED JCB	DATE 1-18-66	MS4815-Ø		
ELECT. DES.	DATE	SHEET	REV. LTR.	
MECH. DES. JCB	DATE 2-4-66			

NOTES

THE CONTENTS OF THIS DRAWING ARE THE EXCLUSIVE PROPERTY OF THE TECHNICAL MATERIEL CORP. ITS UNAUTHORIZED USE OR REPRODUCTION IN WHOLE OR IN PART IS STRICTLY FORBIDDEN.