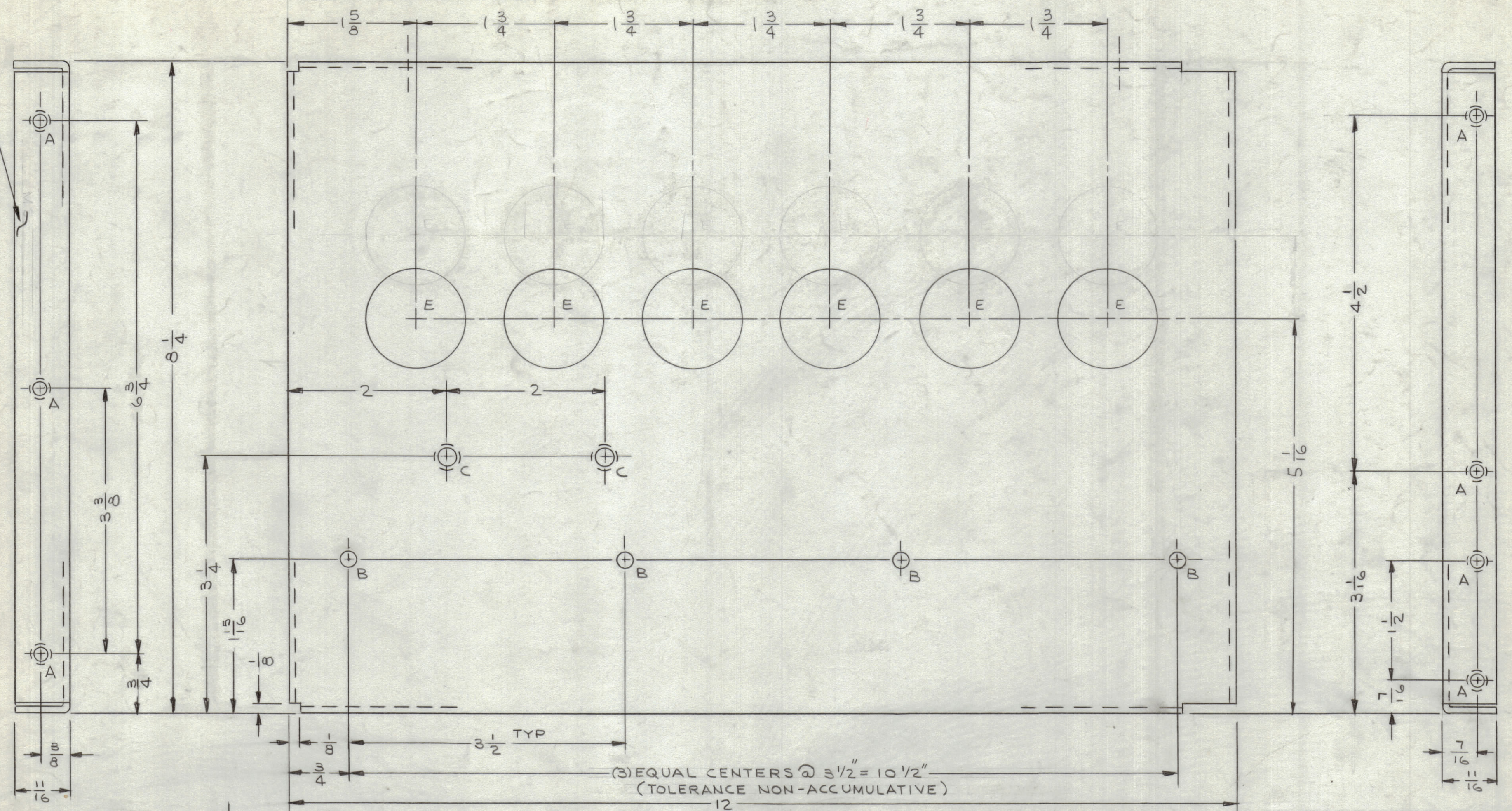
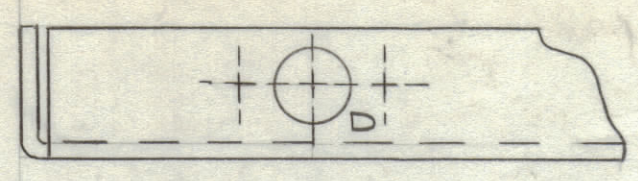
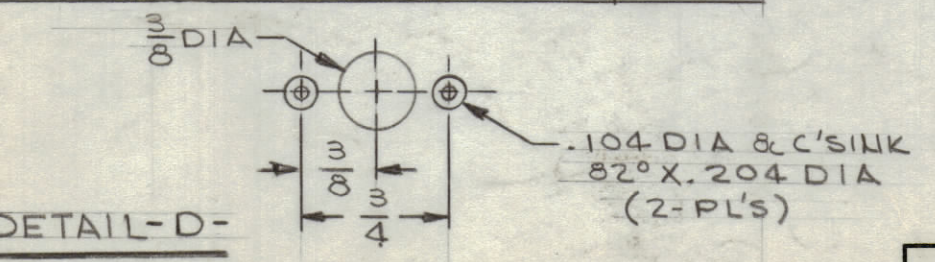


REVISIONS						
ZONE	SYM	DESCRIPTION	DATE	E.M.N. NO.	DRAFT	CHKD
	Ø	ORIGINAL RELEASE FOR PRODUCTION	4-11-66	Ø	WLD	JLB
	A	6 "E" HOLES ADDED	5-23-66	16276	WLD	JLB

METAL STAMP 1/8 HIGH GOTHIC
TMC PT. NO. W/LATEST REV.
LETTER.
(REFER TO CHART)



HOLE LEGEND		
HOLE	DESCRIPTION	REQ'D
A	.221-.224 DIA	7
B	.13/64 DIA	4
C	.250-.253 DIA	2
D	SEE DETAIL	4
E	1-1/4 DIA	6



UNLESS OTHERWISE SPECIFIED:

- USE MATERIAL THICKNESS FOR MAXIMUM RADIUS ON ALL BENDS
- ALL ANGULAR BENDS 90 DEGREES
- REMOVE ALL BURRS AND SHARP EDGES
- MOUNT INSERTS AFTER FINISHING

NOTES

IEA.	RTPH-1	A5341 (RIGHT)
QTY./UNIT	MODEL USED ON	A5344 (LEFT)
SCALE	CODE	ASBY. NO.
1/1		

REQ'D.	ITEM	PART NUMBER	DESCRIPTION	SYMBOL
2	2	NT129-1032-4	NUT, PLAIN, SPLINE	C
7	1	NT129-832-4	NUT, PLAIN, SPLINE	A

MATERIAL		THE TECHNICAL MATERIEL CORP.	
.081 THK ALUMINUM 5052-H32		MAMARONECK, NEW YORK	
FINISH: YELLOW IRIDITE PER S404		TITLE: PLATE, SIDE-RIGHT & LEFT	
DRAWN: J. LESHINSKI	DATE: 11/23/69	FINAL APPROVAL: [Signature]	DATE: 4/7/66
CHECKED: [Signature]	DATE: 4-5-66	MS4822-A	
ELECT. DES. [Signature]	DATE: 4/6/66	SHEET	
MECH. DES. [Signature]	DATE: 4/6/66	REV. LTR.	

MS4822