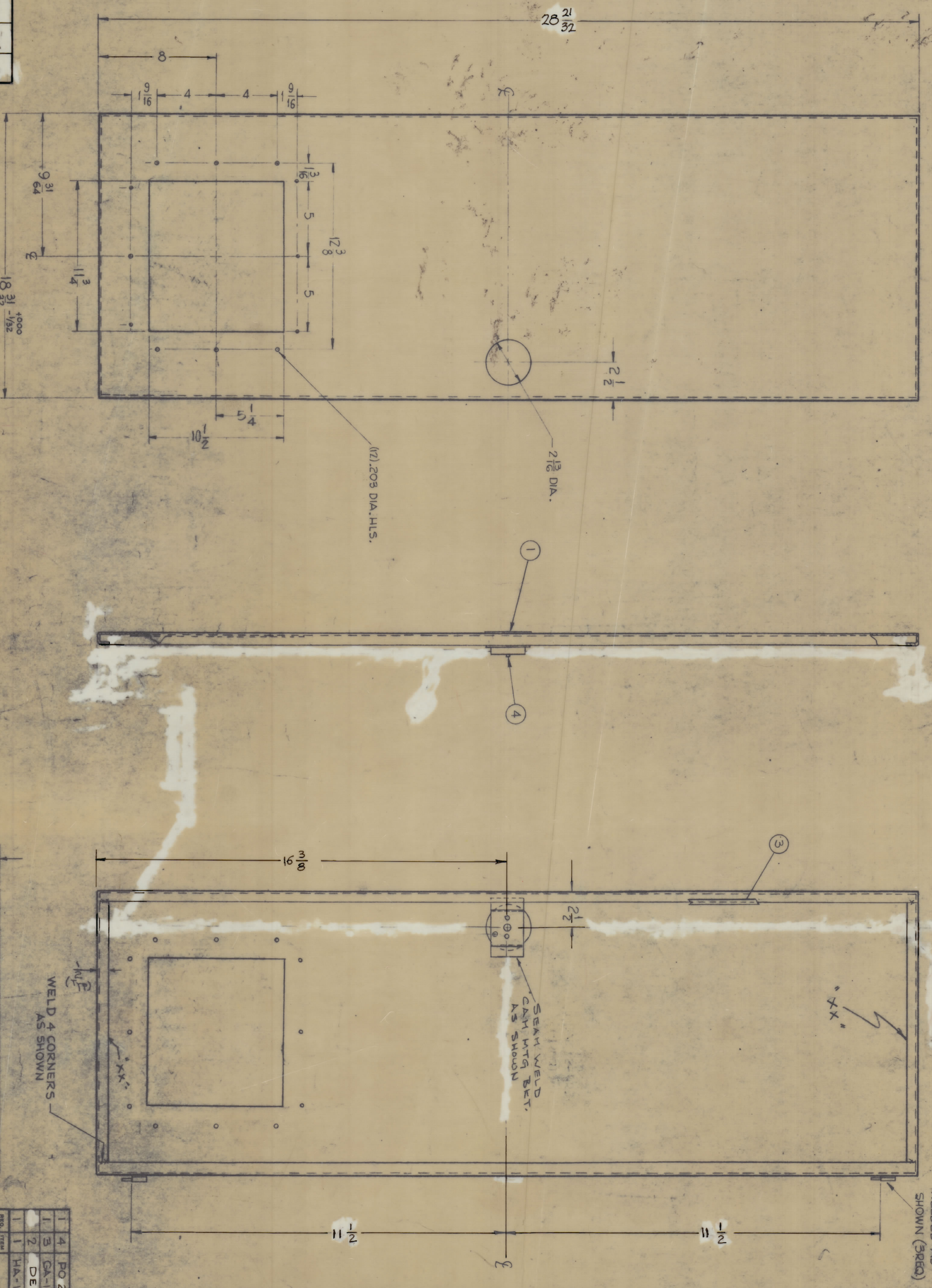


NOTE TO PERSONS RECEIVING THIS DRAWING
 THE TECHNICAL MATERIAL CORPORATION claims
 protection right to the technical design herein.
 This drawing is issued in confidence for engineering
 information only and may not be reproduced or used
 to manufacture anything shown hereon without the
 mission from THE TECHNICAL MATERIAL CORPORATION
 TO the user. This drawing is loaned for mutual
 assistance and is subject to recall at any time.
 Property of:
 THE TECHNICAL MATERIAL CORPORATION
 MANHATTAN, NEW YORK



REV.	ZONE	DESCRIPTION	DATE	BY	CHK. NO.	CHK. BY	CHK. DATE
A		ON PRT. DET. LATCH REQ. DELETED DIM. (2) DELETED. DIM. (4) WAS 20.186 ORIGINAL RELEASE FOR PRODUCTION	3-4-66	5839	501		

UNLESS OTHERWISE SPECIFIED:
 DIMENSIONS ARE IN INCHES
 TOLERANCES ON
 FRACTIONS 3/64 DECIMALS 3.009 ANGLES 1/2°

MAXIMUM ALLOWABLE TOLERANCES HAVE
 BEEN DETERMINED AND ANY DEVIATIONS
 WILL BE CAUSE FOR REJECTION.
 REMOVE ALL BURRS & SHARP EDGES

REV.	DATE	DESCRIPTION
1	12-7-65	RAK106-2

LIBERATED ON: 12-7-65

REV.	DATE	DESCRIPTION
1	12-7-65	RAK106-2

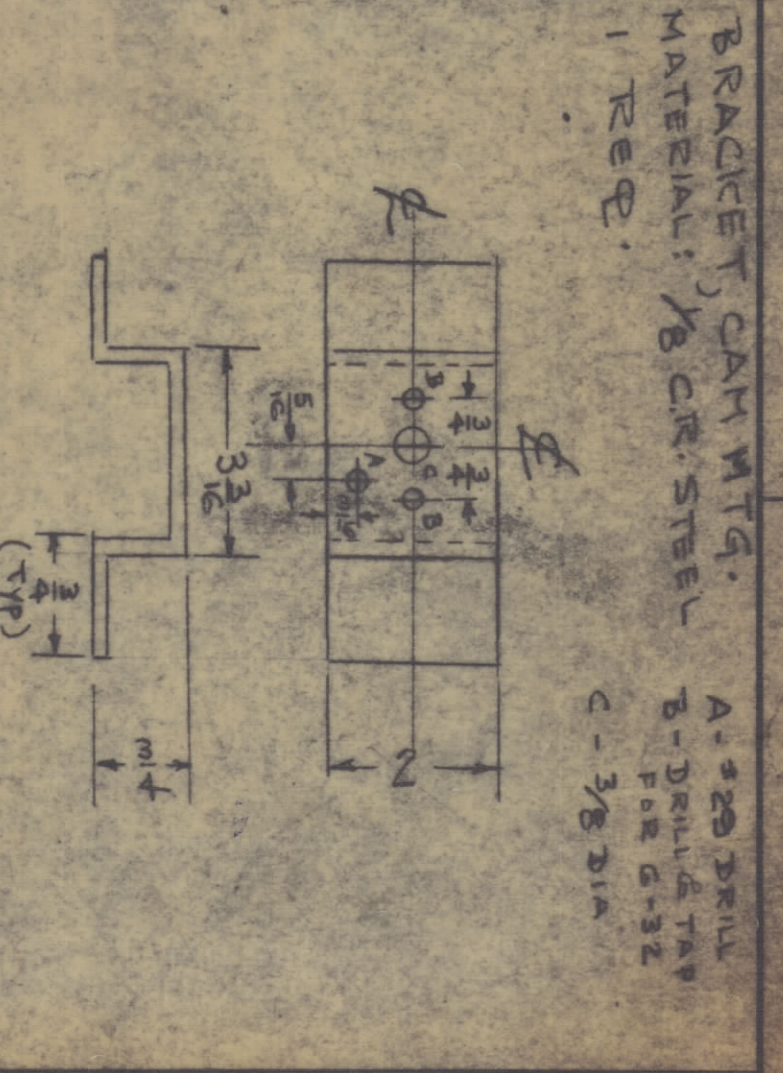
LIBERATED ON: 12-7-65

REV.	DATE	DESCRIPTION
1	12-7-65	RAK106-2

LIBERATED ON: 12-7-65

REV.	DATE	DESCRIPTION
1	12-7-65	RAK106-2

LIBERATED ON: 12-7-65



NOTE ~ DOOR MUST BE FLAT OR 2°
 OVERBEND TOWARDS INSIDE,
 TOP AND BOTTOM.

MS4827 A