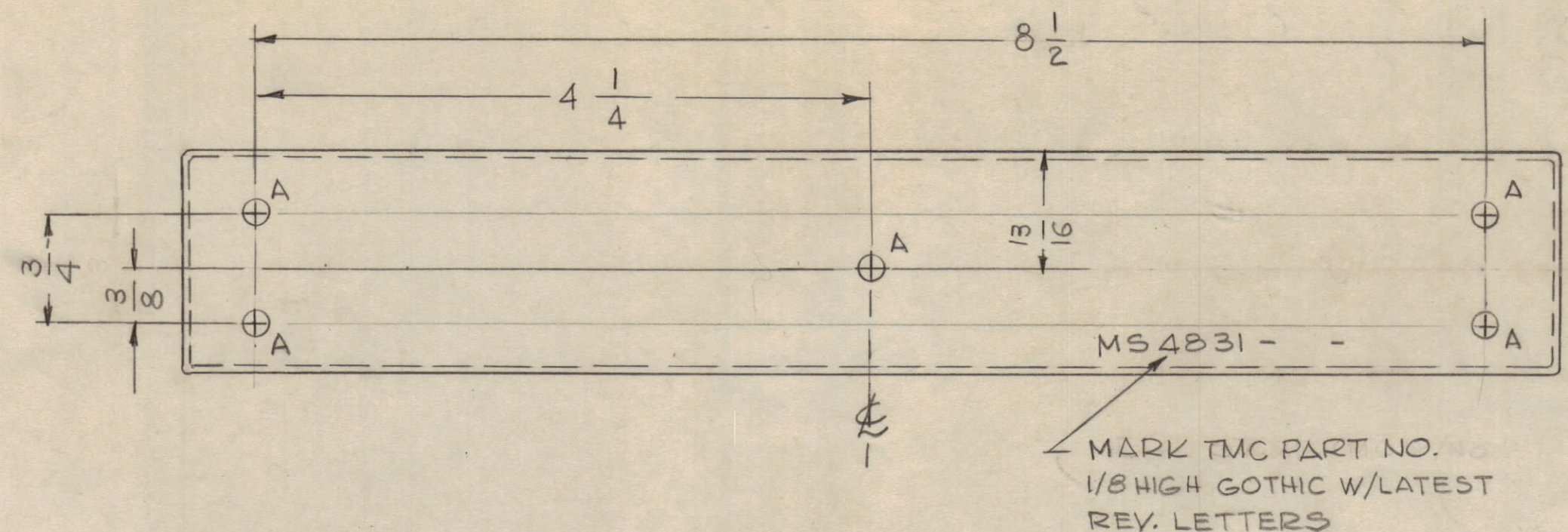
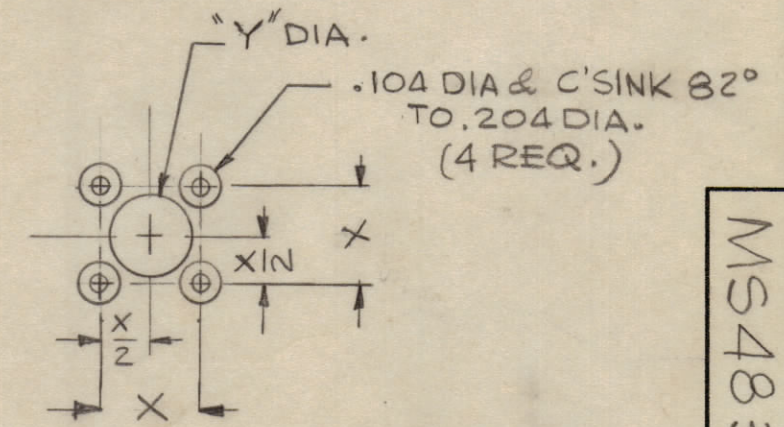
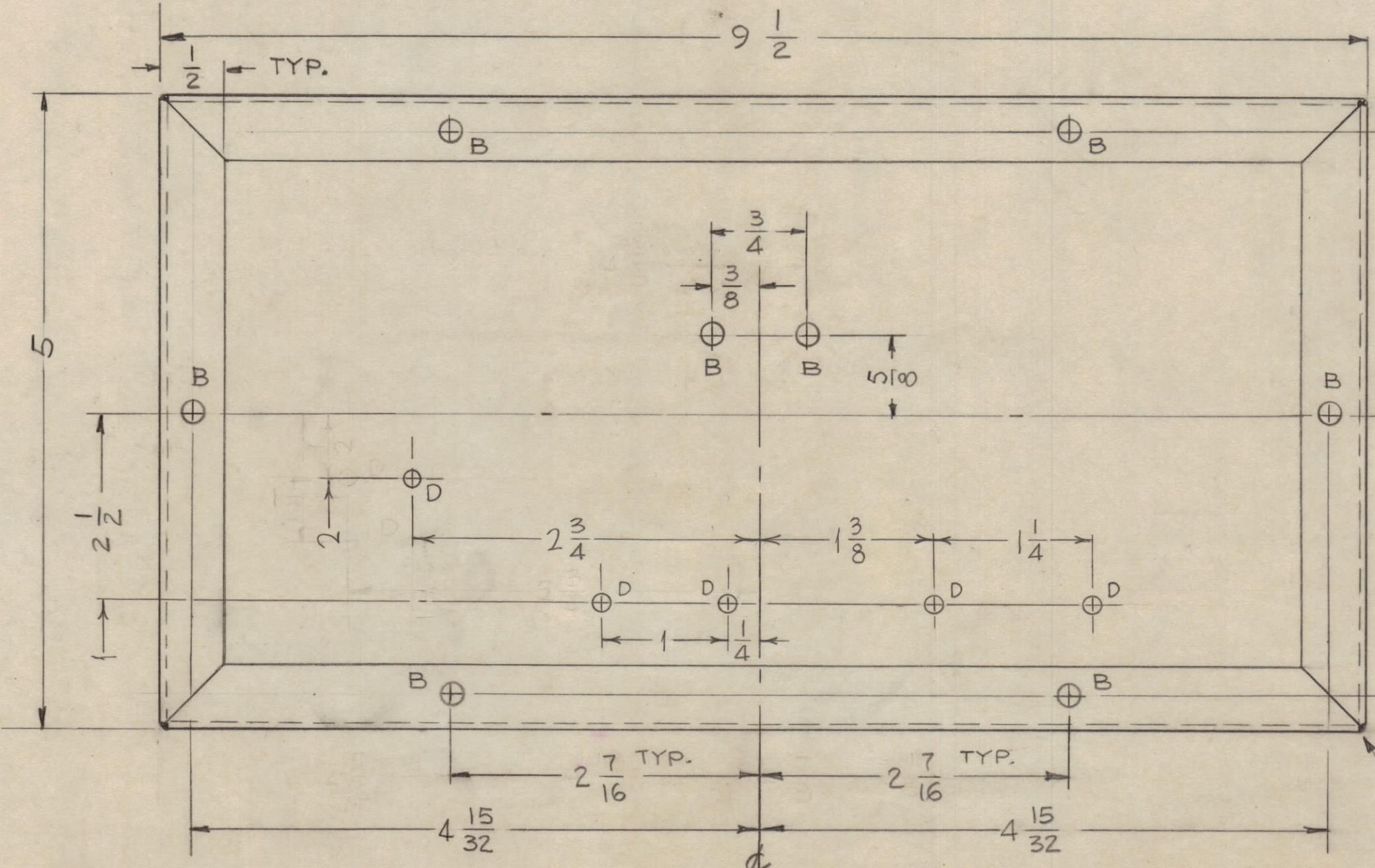
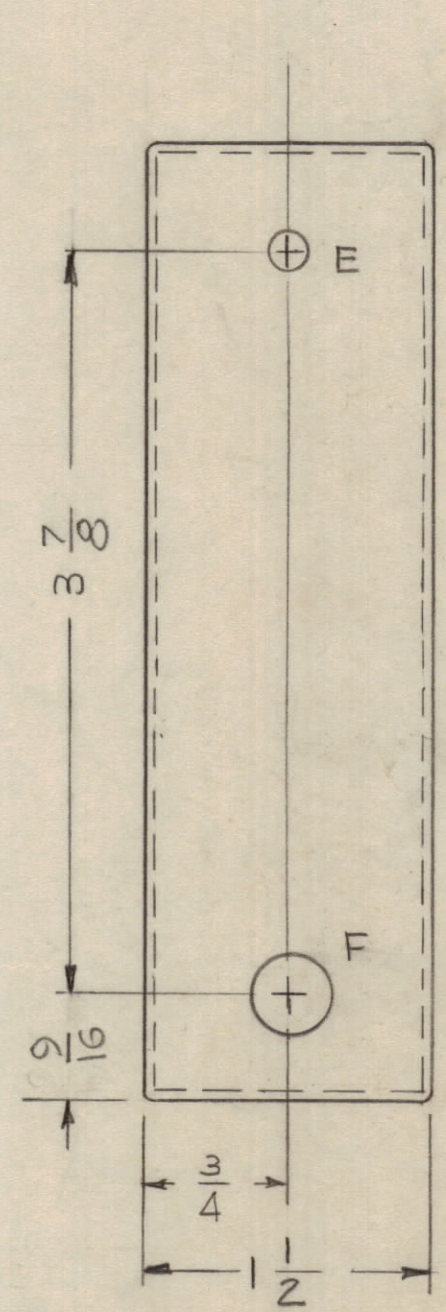


REVISIONS						
ZONE	SYM	DESCRIPTION	DATE	E.M.N. NO.	DRAFT	CHKD
XI		① D'HOLE RELOCATED, ④ D'HOLES ADDED	1-4-66	-M	Jc	
Ø		ORIGINAL RELEASE FOR PROD.	1-4-66	Ø		



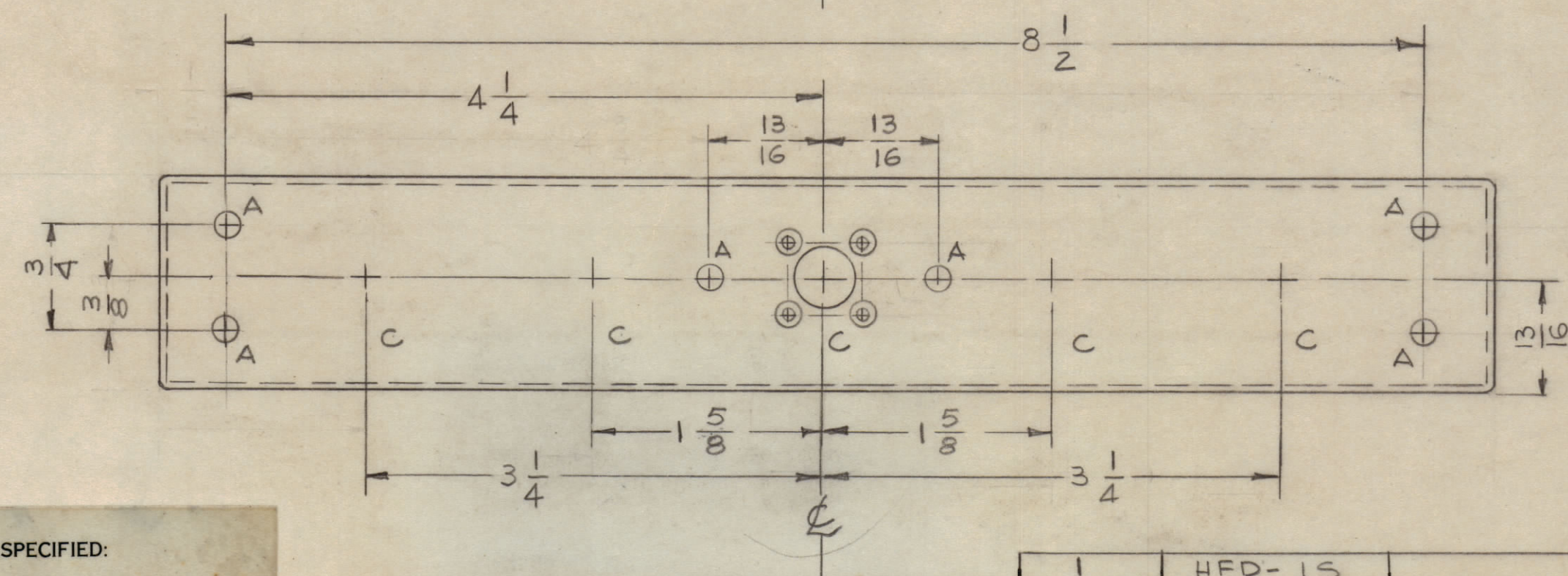
MARK TMC PART NO.
1/8 HIGH GOTHIC W/LATEST
REV. LETTERS

HOLE	DESCRIPTION	REQ.
A	11/64 DIA.	11
B	3/16 DIA.	8
C	SEE DETAIL	5
D	9/64 DIA.	5
E	15/64 DIA.	1
F	7/16 DIA.	1



DETAIL 'C' (5 REQ.)
(SEE CHART)

TMC P/No.	DIM. X	DIM. Y
MS4831-1	.500	7/16 DIA



- UNLESS OTHERWISE SPECIFIED:
1. USE MATERIAL THICKNESS FOR MAXIMUM RADIUS ON ALL BENDS
 2. ALL ANGULAR BENDS 90 DEGREES
 3. REMOVE ALL BURRS AND SHARP EDGES

NOTES

Q'TY./UNIT	MODEL USED ON	ASS'Y. NO.
1	HFD-15	
SCALE	CODE	
1:1	A	

THE CONTENTS OF THIS DRAWING ARE THE EXCLUSIVE PROPERTY OF THE TECHNICAL MATERIEL CORP. ITS UNAUTHORIZED USE OR REPRODUCTION IN WHOLE OR IN PART IS STRICTLY FORBIDDEN.

REQ'D.	ITEM	PART NUMBER	DESCRIPTION	SYMBOL
POSE				
MATERIAL			LIST OF MATERIAL	
.051 THK ALUMINUM 5052 - H32			THE TECHNICAL MATERIEL CORP. MAMARONECK, NEW YORK	
FINISH			TITLE	
S404 YEL. IRIDITE			CHASSIS, MAIN	
UNLESS OTHERWISE SPECIFIED DIMENSIONS ARE IN INCHES AND INCLUDE CHEMICALLY APPLIED OR PLATED FINISHES			DRAWN	DATE
			G.D.L.	12-10-65
			CHECKED	DATE
			J.C.B.	12-15-65
DECIMALS			ELECT. DES.	DATE
.X ± .05			B. Bushnell	1-10-66
.XX ± .01			MECH. DES.	DATE
.XXX ± .005				
FRACTIONS			FINAL APPROVAL	
± 1/64			[Signature]	
ANGLES			DATE	
± 0° 30'			MS4831-Ø	
			SHEET	
			REV. LTR.	

MS4831
Ø