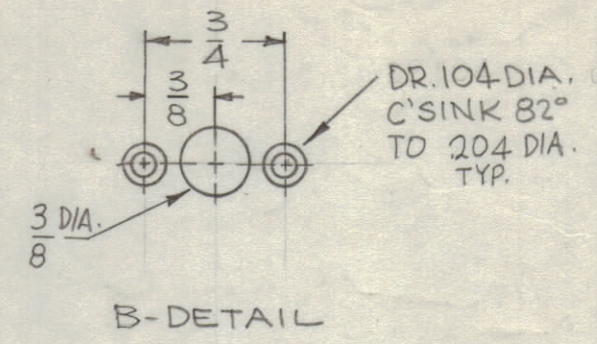
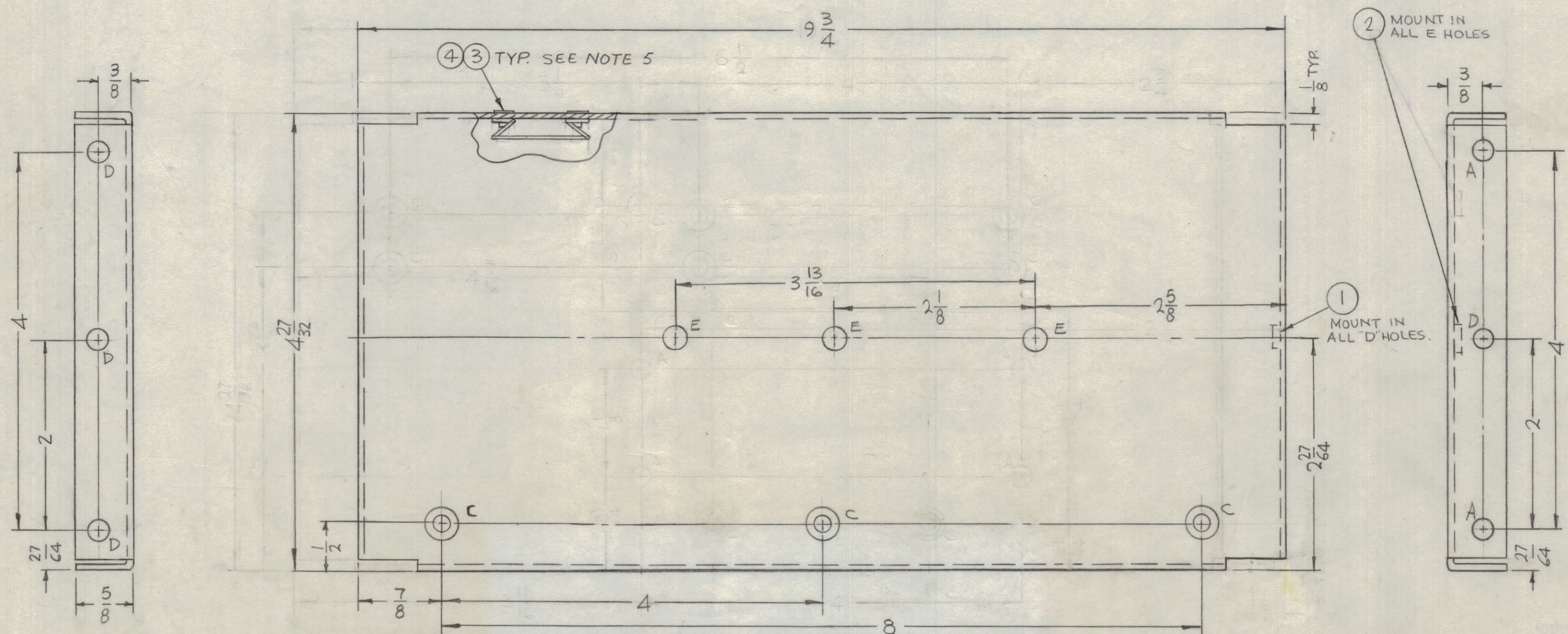
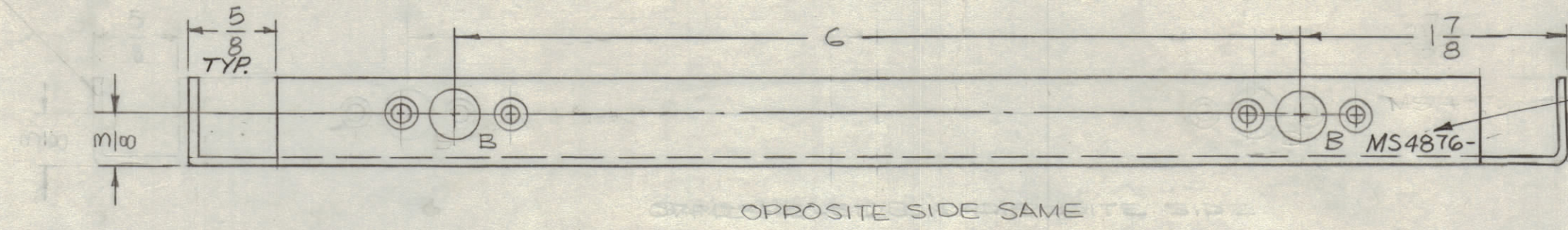


REVISIONS						
ZONE	SYM	DESCRIPTION	DATE	E.M.N. NO.	DRAFT	CHKD APPD
	X1	C HOLES RELOCATED ON -1	11-11-65	X1		
	X2	COMPLETELY REVISED, WAS MS4876-1 #2	4-28-66	X2		aa
	X3	D&E HOLES WERE 15/64, E HOLES RE-LOCATED	5-16-66	X3		aa
	X4	E HOLES WERE 250-253, RELOCATED E HOLES	6-9-66	X4		aa
	X5	ADDED MS4876-1 #2 (LEFT & RIGHT)	6-22-66	X5	HCA	
	X6	DWG WAS MS4876-1 #2	7-28-66	X6		
	X7	IT. 2 WAS NT129-1024, E HOLE WAS 250-251	9-1-66	M	Jc	
	B	ORIGINAL RELEASE FOR PRODUCTION	11-22-66		RME	
	A	5/8 CUTOUT WAS 3/8	1-16-68	18721		
	B	ADDED IT. 3 #4 & NOTE 5	6-6-68	18943	HG	FB



MOUNT IN ALL E HOLES



HOLES	DESCRIPTION	REQ
A	15/64 DIA.	2
B	SEE DETAIL	4
C	DR. 169 DIA. C'SINK 82° TO 337 D.	3
D	221-224 DIA.	4
E	277-280 DIA.	3

UNLESS OTHERWISE SPECIFIED:

- USE MATERIAL THICKNESS FOR MAXIMUM RADIUS ON ALL BENDS
- ALL ANGULAR BENDS 90 DEGREES
- REMOVE ALL BURRS AND SHARP EDGES
- MOUNT INSERTS AFTER FINISHING
- IT. 3 #4 TO BE SUPPLIED & ASSEMBLED BY TMC

NOTES

TMC P/N: MS4876-1, MS4876-2, MS4876-3, MS4876-4, MS4876-5, MS4876-6, MS4876-7, MS4876-8, MS4876-9, MS4876-10, MS4876-11, MS4876-12, MS4876-13, MS4876-14, MS4876-15, MS4876-16, MS4876-17, MS4876-18, MS4876-19, MS4876-20, MS4876-21, MS4876-22, MS4876-23, MS4876-24, MS4876-25, MS4876-26, MS4876-27, MS4876-28, MS4876-29, MS4876-30, MS4876-31, MS4876-32, MS4876-33, MS4876-34, MS4876-35, MS4876-36, MS4876-37, MS4876-38, MS4876-39, MS4876-40, MS4876-41, MS4876-42, MS4876-43, MS4876-44, MS4876-45, MS4876-46, MS4876-47, MS4876-48, MS4876-49, MS4876-50, MS4876-51, MS4876-52, MS4876-53, MS4876-54, MS4876-55, MS4876-56, MS4876-57, MS4876-58, MS4876-59, MS4876-60, MS4876-61, MS4876-62, MS4876-63, MS4876-64, MS4876-65, MS4876-66, MS4876-67, MS4876-68, MS4876-69, MS4876-70, MS4876-71, MS4876-72, MS4876-73, MS4876-74, MS4876-75, MS4876-76, MS4876-77, MS4876-78, MS4876-79, MS4876-80, MS4876-81, MS4876-82, MS4876-83, MS4876-84, MS4876-85, MS4876-86, MS4876-87, MS4876-88, MS4876-89, MS4876-90, MS4876-91, MS4876-92, MS4876-93, MS4876-94, MS4876-95, MS4876-96, MS4876-97, MS4876-98, MS4876-99, MS4876-100

REQ'D.	ITEM	PART NUMBER	DESCRIPTION	SYMBOL
4	4	FS102-2	LOCKSPRING	
8	3	RI100-094-32	RIVET, BLIND	
3	2	NT129-1224-4	NUT, PLAIN SPLINE	E
4	1	NT129-832-4	NUT, PLAIN SPLINE	D

F. BUDETTI LIST OF MATERIAL			
MATERIAL	.064 THICK ALUMINUM 5052-H32		
FINISH	S404 YEL. IRIDITE		
TITLE	PLATE, SIDE, LEFT		
DRAWN	DATE	FINAL APPROVAL	DATE
CHKD	DATE		DATE
ELECT. DES.	DATE		DATE
MECH. DES.	DATE		DATE
UNLESS OTHERWISE SPECIFIED DIMENSIONS ARE IN INCHES AND INCLUDE CHEMICALLY APPLIED OR PLATED FINISHES		TOLERANCES	
DECIMALS	FRACTIONS	ANGLES	± 0° 30'
.X ± .05	± 1/64		
.XX ± .01			
.XXX ± .005			

MS 4876 B