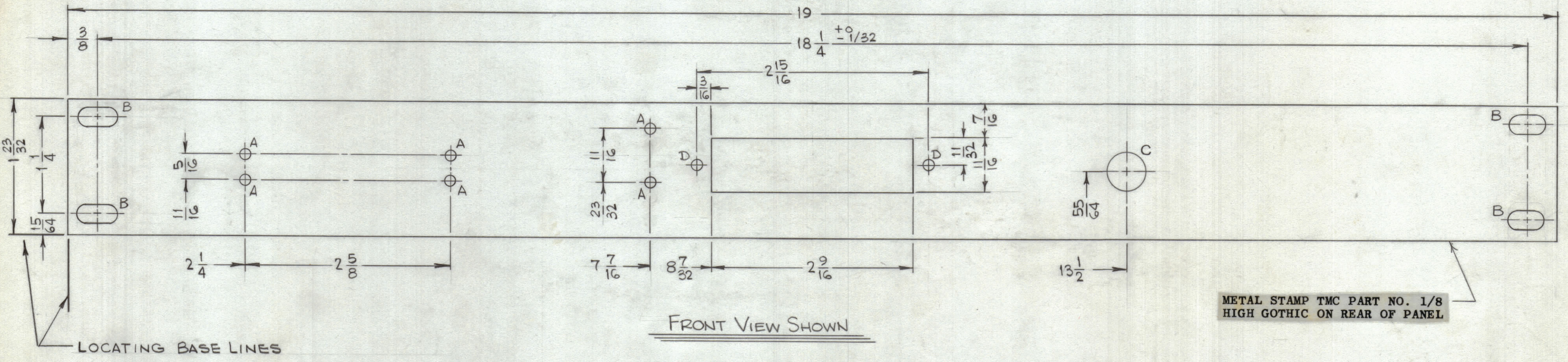
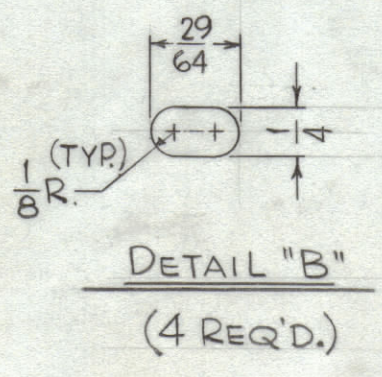


REVISIONS							
ZONE	SYM	DESCRIPTION	DATE	E.M.N. NO.	DRAFT	CHKD	APPD
	X1	ADDED "D" HOLES (2) 1/64 DIA.	7/12/66	X1	HGA		
	Ø	ORIGINAL RELEASE FOR PRODUCTION	9-19-66	Ø	WV		HL



METAL STAMP TMC PART NO. 1/8 HIGH GOTHIC ON REAR OF PANEL



HOLE	DESCRIPTION	REQ'D.
A	9/64 DIA.	6
B	SEE DETAIL	4
C	1/2 DIA.	1
D	1/64 DIA.	2

MACHINING:

- MILL ALL EDGES.
- HOLES MUST BE DRILLED, UNLESS OTHERWISE SPECIFIED.
- LATERAL BOW OF PANEL MUST BE KEPT TO .031 TOLERANCE.
- PANEL MUST BE FREE OF ALL MACHINING MARKS, GOUGES AND SCRATCHES. IF NECESSARY, SAND FRONT OF PANEL WITH NO. 120 GRIT SANDPAPER.

FINISH NOTES:

- S404 - IRIDITE 14-2 AL-COAT.
- S114 - ZINC CHROMATE PRIMER } FRONT AND
- S115 - SMOOTH GRAY ENAMEL } EDGES ONLY

NOTES

1	AXG28	
Q'TY./UNIT	MODEL USED ON	ASS'Y. NO.
SCALE 1:1	CODE	

THE CONTENTS OF THIS DRAWING ARE THE EXCLUSIVE PROPERTY OF THE TECHNICAL MATERIEL CORP. ITS UNAUTHORIZED USE OR REPRODUCTION IN WHOLE OR IN PART IS STRICTLY FORBIDDEN.

REF. LD2071

REQ'D.	ITEM	PART NUMBER	DESCRIPTION	SYMBOL
EATON LIST OF MATERIAL				
MATERIAL 3/16 THK. ALUMINUM, 2024-T3			THE TECHNICAL MATERIEL CORP. MAMARONECK, NEW YORK	
FINISH SEE NOTE			TITLE PANEL, METER	
UNLESS OTHERWISE SPECIFIED DIMENSIONS ARE IN INCHES AND INCLUDE CHEMICALLY APPLIED OR PLATED FINISHES		DRAWN H. AUSTIN	DATE 4-4-66	FINAL APPROVAL
DECIMALS .X ± .05 .XX ± .01 .XXX ± .005		CHECKED	DATE	DATE 7/16/66
FRACTIONS ± 1/64 ANGLES ± 0° 30'		ELECT. DES.	DATE	MS4905
TOLERANCES		MECH. DES.	DATE	Ø
		SHEET	REV. LTR.	

MS4905