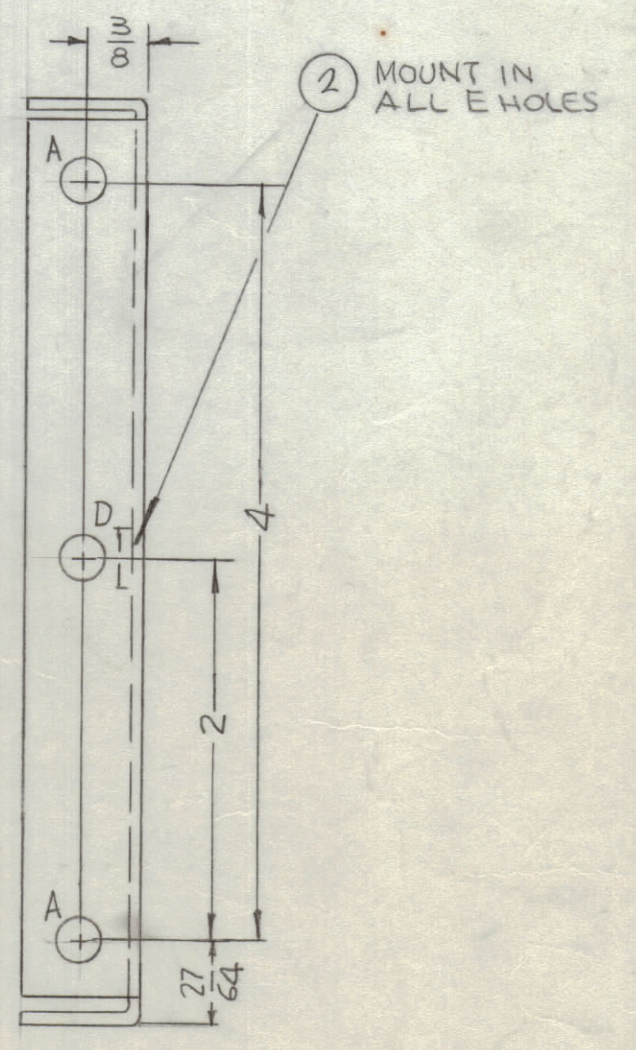
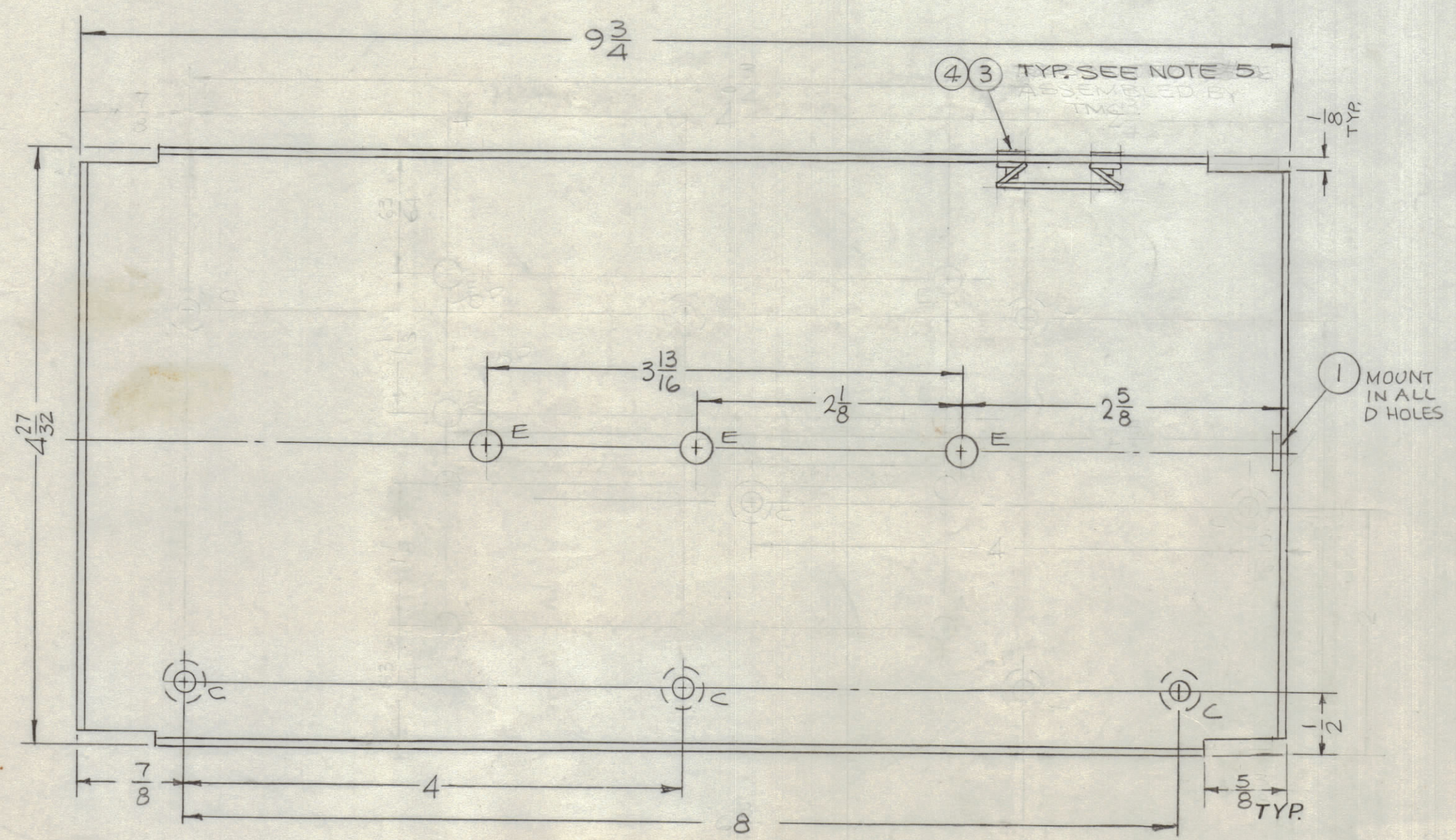
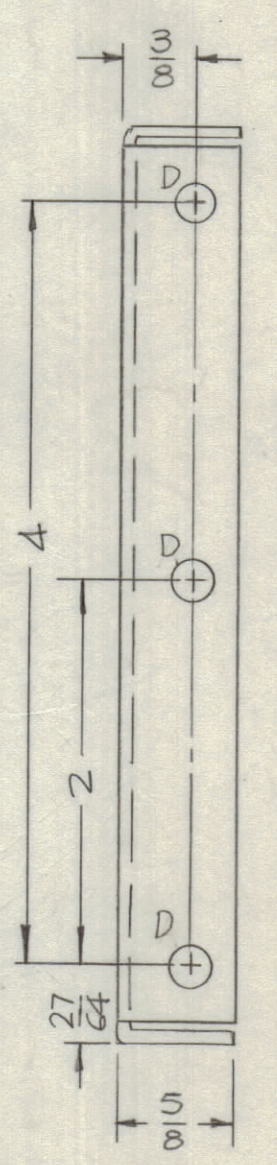
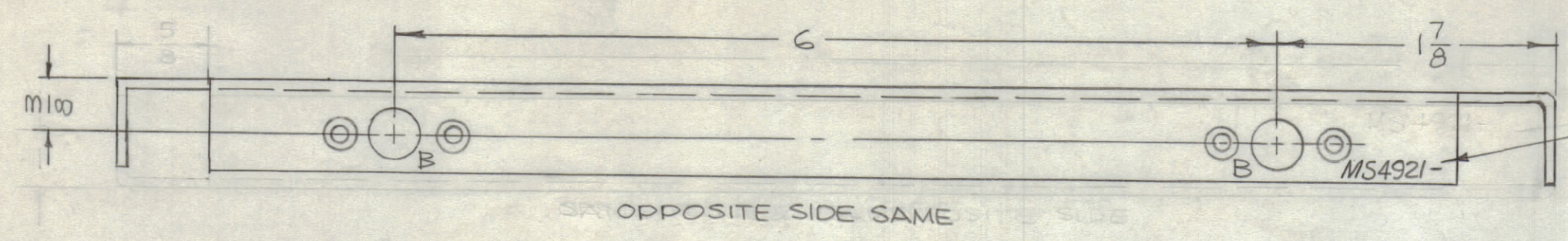
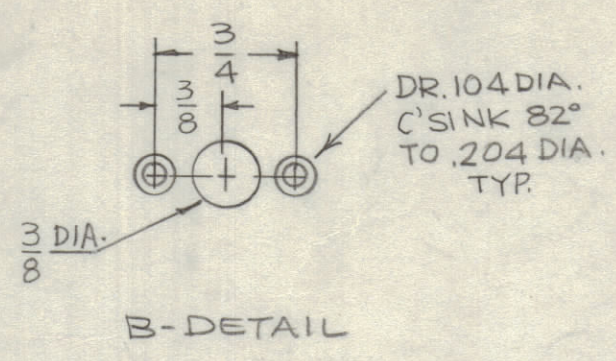


REVISIONS							
ZONE	SYM	DESCRIPTION	DATE	E.M.N. NO.	DRAFT	CHKD	APPD
X1		TMC PT NO WAS MS49-21	5-9-66		Jc	JFB	
X2		E & C HOLES RELOCATED, D & E HOLES WERE 15/64	5-16-66	X2	JFB	JFB	JFB
X3		E HOLES WERE 221-224 DIA., RE-LOCATED E HOLES	6-9-66	X3	JFB	JFB	JFB
X4		2 C HOLES ADDED	7-28-66	X4	JFB	JFB	JFB
X5		1T.2 WAS NT129-1024, 'E' HOLE WAS .250-.253	9-1-66		Jc	JFB	JFB
X6		2 C OBS., B WAS 6-3/4	10-20-66	X6	JFB	JFB	JFB
Ø		ORIGINAL RELEASE FOR PRODUCTION	11-22-66		RME		
A		5/8" CUTOUT WAS 3/8"	1-17-67	18721	ENJ	JFB	JFB
B		ADDED 1T.3 & 4 & NOTE 5	6-6-68	18943	HG	JFB	JFB



HOLES	DESCRIPTION	REQ
A	15/64 DIA.	2
B	SEE DETAIL	4
C	DR. 169 DIA. C'SINK 82° TO .337D.	3
D	.221-.224 DIA.	4
E	.277-.280 DIA.	3

UNLESS OTHERWISE SPECIFIED:

1. USE MATERIAL THICKNESS FOR MAXIMUM RADIUS ON ALL BENDS
2. ALL ANGULAR BENDS 90 DEGREES
3. REMOVE ALL BURRS AND SHARP EDGES
4. MOUNT INSERTS AFTER FINISHING
5. ITEM 3&4 TO BE SUPPLIED & ASSEMBLED BY TMC

QTY./UNIT	MODEL USED ON	ASS'Y. NO.
1	SWCD-3K	
1	SWCA-3K	A5264

THE CONTENTS OF THIS DRAWING ARE THE EXCLUSIVE PROPERTY OF THE TECHNICAL MATERIEL CORP. ITS UNAUTHORIZED USE OR REPRODUCTION IN WHOLE OR IN PART IS STRICTLY FORBIDDEN.

REQ'D.	ITEM	PART NUMBER	DESCRIPTION	SYMBOL
4	4	FS102-2	LOCK SPRING	
8	3	RI 100-094-32	RIVET, BLIND	
3	2	NT129-1224-4	NUT, PLAIN SPLINE	E
4	1	NT129-832-4	NUT, PLAIN SPLINE	D

F. BUDETTI LIST OF MATERIAL

MATERIAL: .064 THICK ALUMINUM 5052-H32

FINISH: S404 YEL. IRIDITE

TITLE: THE TECHNICAL MATERIEL CORP. MAMARONECK, NEW YORK

PLATE, SIDE, RIGHT

UNLESS OTHERWISE SPECIFIED DIMENSIONS ARE IN INCHES AND INCLUDE CHEMICALLY APPLIED OR PLATED FINISHES

DECIMALS: .X ± .05, .XX ± .01, .XXX ± .005

FRACTIONS: ± 1/64, ANGLES: ± 0° 30'

SCALE: 1:1

CODE: A

DRAWN: JFB

CHECKED: JFB

ELECT. DES: JFB

MECH. DES: JFB

DATE: 4-28-66

DATE: 11-19-66

DATE: 11-27-66

DATE: 11-21-66

FINAL APPROVAL: JFB

MS4921

SHEET: B

REV. LTR.

MS4921 B