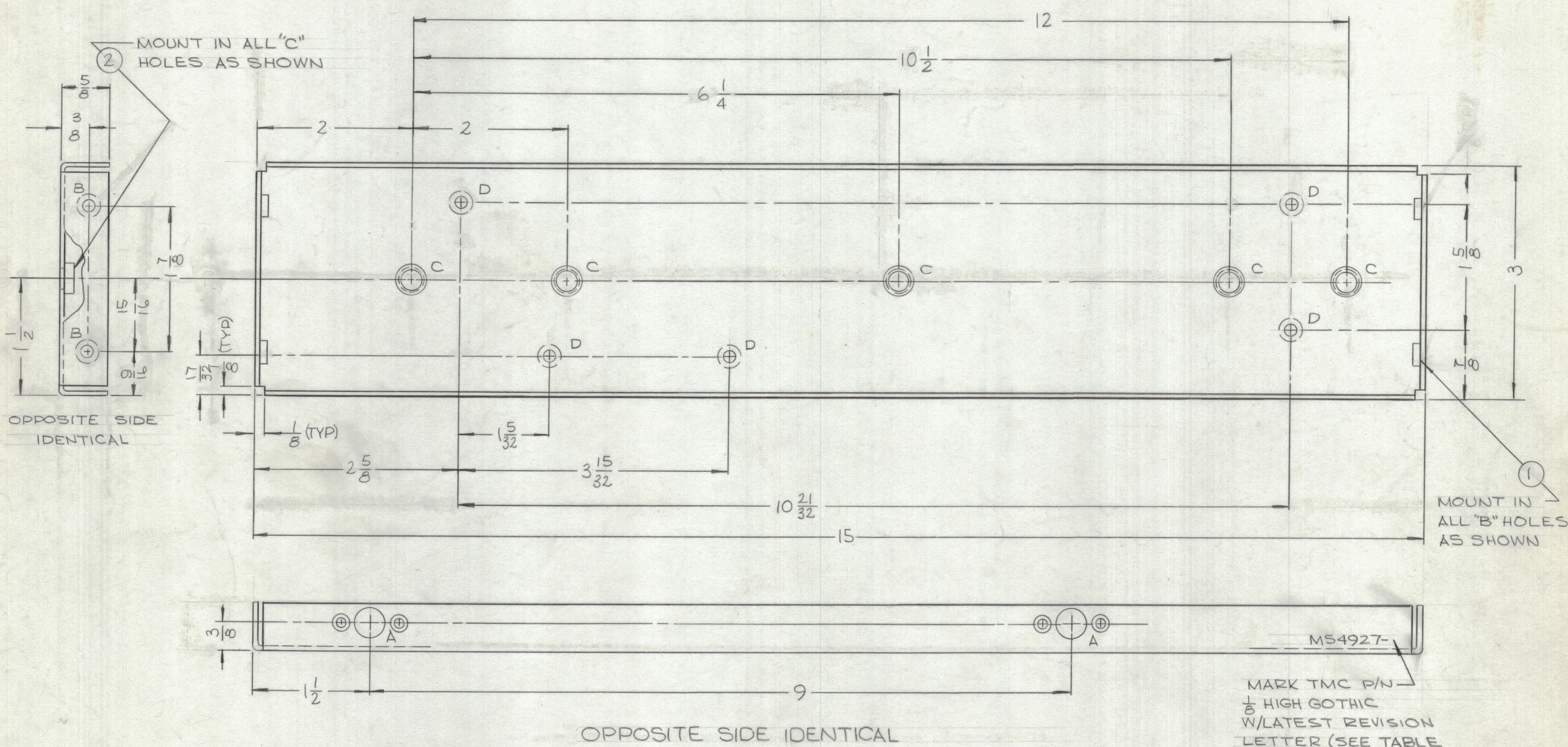
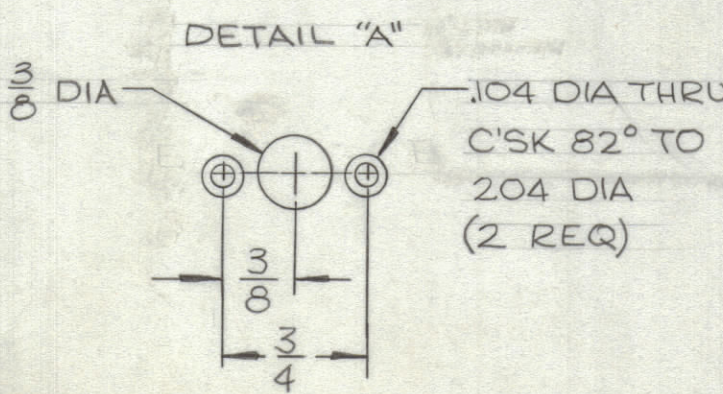


TMC P/N	VIEW	SIDE	ASSY NO.
MS4927-1	AS SHOWN	LEFT	A5527
MS4927-2	OPPOSITE SIDE	RIGHT	A5528

REVISIONS							
ZONE	SYM	DESCRIPTION	DATE	E.M.N. NO.	DRAFT	CHKD	APPD
	X	EXPERIMENTAL RELEASE	5-27-66	-H	WFO		
	X <sub>1</sub>	1" C HOLES ADDED	5-27-66	-H	WFO	OCB	
	Ø	ORIGINAL RELEASE FOR PRODUCTION	9-27-66	Ø	RME		



MS4927  
Ø



HOLE	DESCRIPTION	REQ'D
A	SEE DETAIL	4
B	.191-.194 DIA	4
C	.250-.253 DIA	5
D	.144 DIA C'SK 82° TO .284 DIA (REAR)	5
E	3/16 DIA	4

UNLESS OTHERWISE SPECIFIED:

1. USE MATERIAL THICKNESS FOR MAXIMUM RADIUS ON ALL BENDS
2. ALL ANGULAR BENDS 90 DEGREES
3. REMOVE ALL BURRS AND SHARP EDGES
4. MOUNT INSERTS AFTER FINISHING

QTY	ITEM	PART NUMBER	DESCRIPTION	SYMBOL
5	2	NT129-1032-4	NUT, PLAIN SPLINE	C
4	1	NT129-632-4	NUT, PLAIN SPLINE	B

DUDDLES LIST OF MATERIAL

MATERIAL	064 5052-H32 ALUMINUM	TITLE	THE TECHNICAL MATERIEL CORP. MAMARONECK, NEW YORK
FINISH	S404 YELLOW IRIDITE	TITLE	PLATE, SIDE

UNLESS OTHERWISE SPECIFIED DIMENSIONS ARE IN INCHES AND INCLUDE CHEMICALLY APPLIED OR PLATED FINISHES	DRAWN	DATE	FINAL APPROVAL	DATE
DECIMALS .X ± .05 .XX ± .01 .XXX ± .005	WFO	5-20-66	[Signature]	9/23/66
FRACTIONS ± 1/64 ANGLES ± 0° 30'	CHECKED	DATE	DATE	DATE
TOLERANCES	OCB	9-23-66	MS4927	Ø
	ELECT. DES.	DATE	DATE	DATE
	MECH. DES.	DATE	DATE	DATE

NOTES

THE CONTENTS OF THIS DRAWING ARE THE EXCLUSIVE PROPERTY OF THE TECHNICAL MATERIEL CORP. ITS UNAUTHORIZED USE OR REPRODUCTION IN WHOLE OR IN PART IS STRICTLY FORBIDDEN.