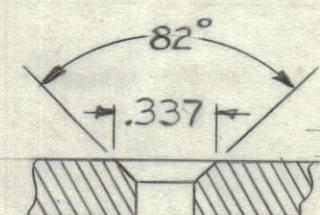


REVISIONS						
ZONE	SYM	DESCRIPTION	DATE	E.M.N. NO.	DRAFT	CHKD
	Ø	ORIGINAL RELEASE FOR PRODUCTION	9/30/66	Ø	CV	JLA

LEGEND		
HOLE	DESCRIPTION	REQ
A	3/16 DIA	6
B	1/4 DIA	2
C	1" DIA	5
D	.221/.224 DIA	13
E	SEE DETAIL	5
F	SEE DETAIL	14
G	SEE DETAIL	3
H	SEE DETAIL	1
J	.161/.164 DIA	2
K	1/8 DIA	1
L	SEE DETAIL	1
N	5/32 DIA	1

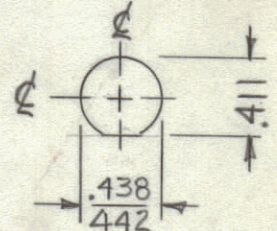
② MOUNT ITEM 2 IN "J" HOLES AS SHOWN AFTER FINISHING

① MOUNT ITEM 1 IN ALL "D" HOLES AS SHOWN AFTER FINISHING



DR & C'SINK FOR 8-32 F.H.S.

"E" DETAIL 5 REQ



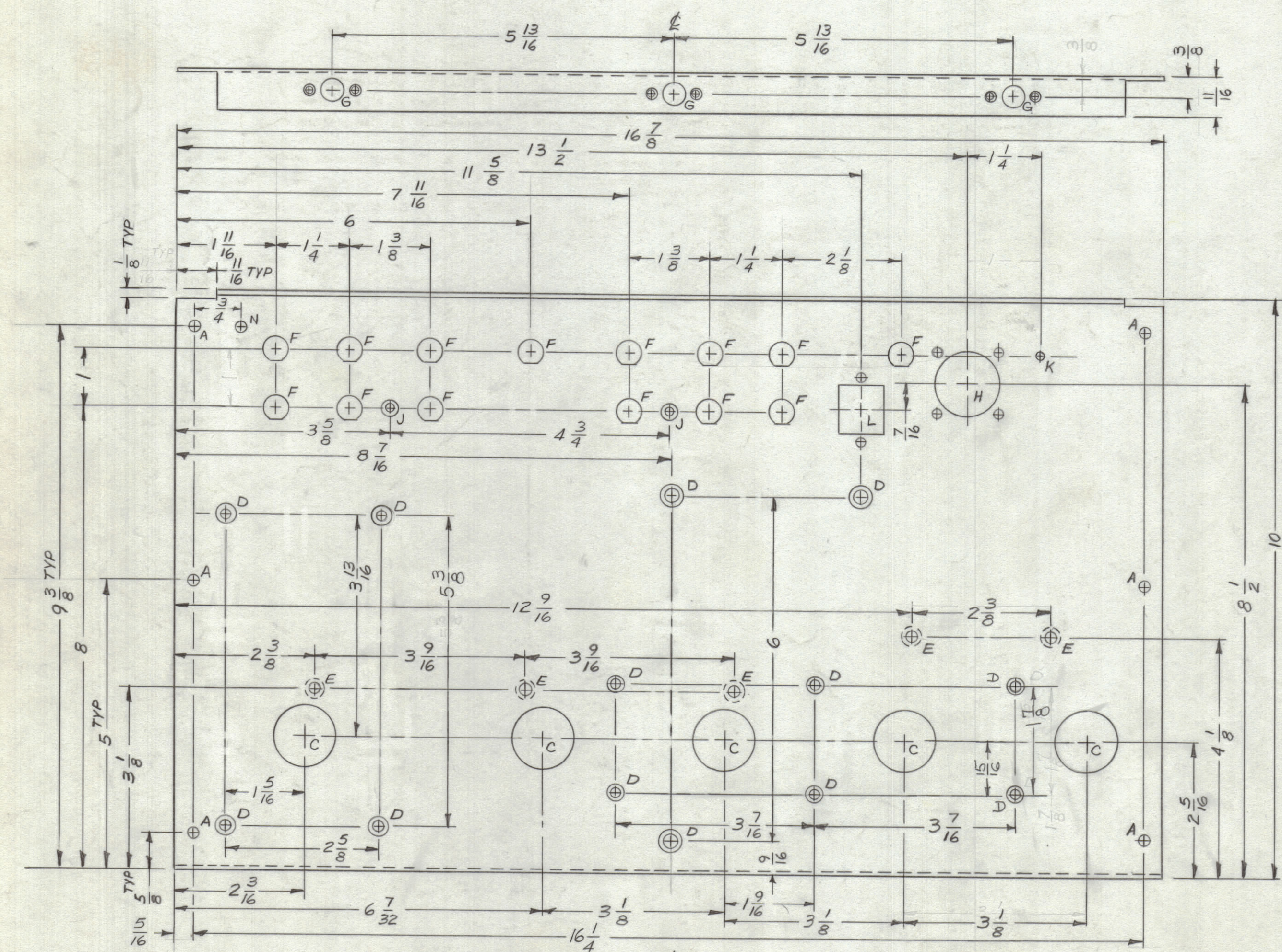
"F" DETAIL 14 REQ

- UNLESS OTHERWISE SPECIFIED:
- USE MATERIAL THICKNESS FOR MAXIMUM RADIUS ON ALL BENDS
  - ALL ANGULAR BENDS 90 DEGREES
  - REMOVE ALL BURRS AND SHARP EDGES

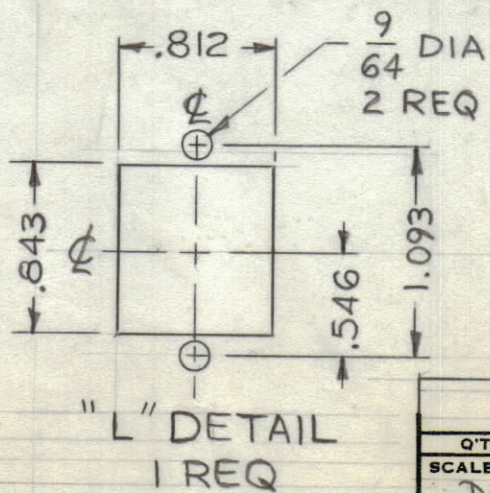
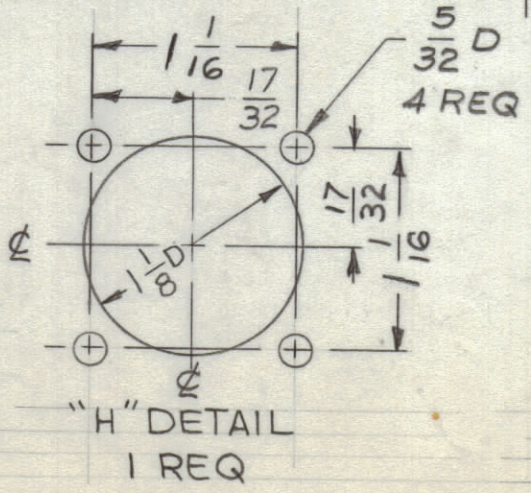
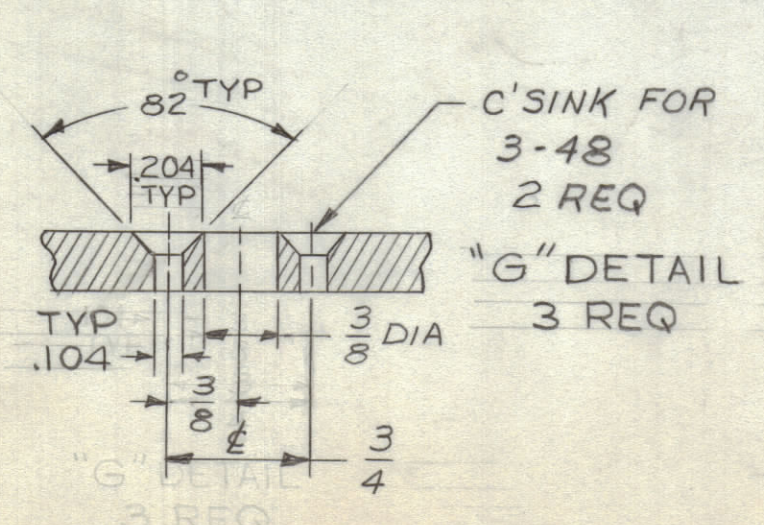
REF: LD-2091 (4) 2 SHEETS

REQ'D	ITEM	PART NUMBER	DESCRIPTION	SYMBOL
2	2	NT-129-440-4	NUT, ROUND, SWAGE TYPE	J
13	1	NT-129-832-4	NUT, ROUND, SWAGE TYPE	D

LIST OF MATERIAL			
MATERIAL .081 ALUMINUM 5052-H32		THE TECHNICAL MATERIEL CORP. MAMARONECK, NEW YORK	
FINISH S404 YEL IRIDITE		TITLE PANEL, REAR	
DRAWN HOFFMAN	DATE 6-2-66	FINAL APPROVAL [Signature]	DATE 6-11-66
CHECKED [Signature]	DATE 6-11-66	DATE	DATE
UNLESS OTHERWISE SPECIFIED DIMENSIONS ARE IN INCHES AND INCLUDE CHEMICALLY APPLIED OR PLATED FINISHES		ELECT. DES.	MECH. DES.
DECIMALS .X ± .05 .XX ± .01 .XXX ± .005	FRACTIONS ± 1/64 ANGLES ± 0° 30'	DATE 6-28-66	DATE
TOLERANCES		DATE	DATE
SCALE DO NOT SCALE		DATE	DATE
THE CONTENTS OF THIS DRAWING ARE THE EXCLUSIVE PROPERTY OF THE TECHNICAL MATERIEL CORP. ITS UNAUTHORIZED USE OR REPRODUCTION IN WHOLE OR IN PART IS STRICTLY FORBIDDEN.		DATE	DATE
MODEL USED ON HFS-2		DATE	DATE
ASS'Y. NO.		DATE	DATE
CODE		DATE	DATE
REV. LTR.		DATE	DATE



MARK TMC P/N  
1/8" HIGH GOTHIC  
W/LATEST REV LET.



NOTES

MS 4936 Ø