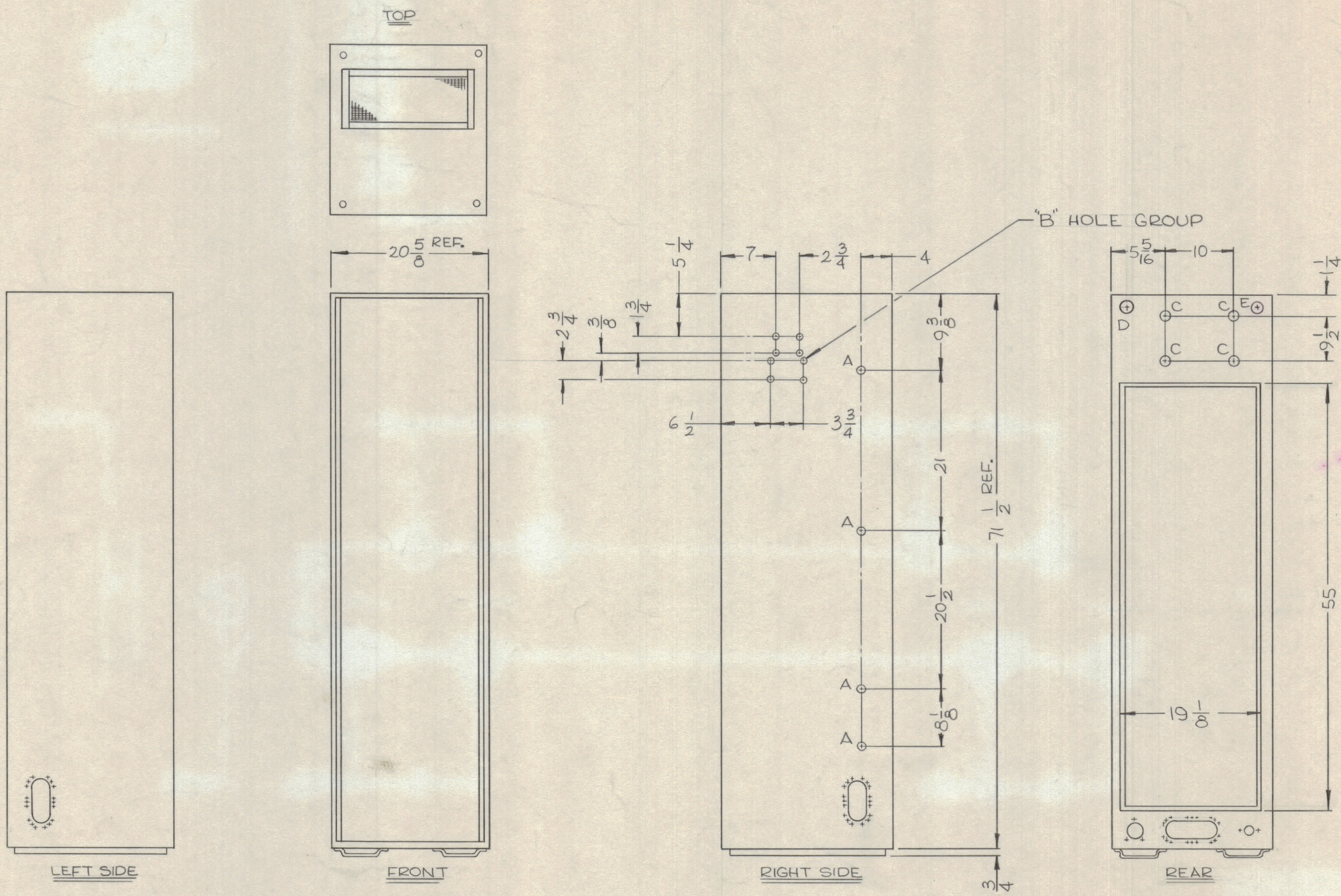
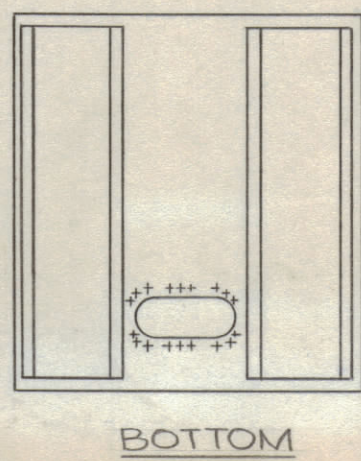


REVISIONS							
ZONE	SYM	DESCRIPTION	DATE	E.M.N. NO.	DRAFT	CHKD	APPD



HOLE	DESCRIPTION	REQ'D
A	3/16 DIA	4
B	.078 DIA	8
C	13/32 DIA	4
D	ENLARGE EXISTING HOLE TO 1 1/8	1
E	ENLARGE EXISTING HOLE TO 3/8	1



NOTES

RAK-12H		
Q'TY./UNIT	MODEL USED ON	ASS'Y. NO.
SCALE	CODE	

THE CONTENTS OF THIS DRAWING ARE THE EXCLUSIVE PROPERTY OF THE TECHNICAL MATERIEL CORP. ITS UNAUTHORIZED USE OR REPRODUCTION IN WHOLE OR IN PART IS STRICTLY FORBIDDEN.

1	1	MS2509-2	CABINET, ELECT. EQUIP	
REQ'D.	ITEM	PART NUMBER	DESCRIPTION	SYMBOL
STURMER LIST OF MATERIAL				
MATERIAL			THE TECHNICAL MATERIEL CORP. MAMARONECK, NEW YORK	
FINISH			TITLE MODIFICATION FOR RAK-12H	
UNLESS OTHERWISE SPECIFIED DIMENSIONS ARE IN INCHES AND INCLUDE CHEMICALLY APPLIED OR PLATED FINISHES			DRAWN	DATE
DECIMALS X ± .05 .XX ± .01 .XXX ± .005			CHECKED <i>JTB</i>	DATE 6-17-66
FRACTIONS ± 1/64 ANGLES ± 0° 30'			ELECT. DES.	DATE
TOLERANCES			MECH. DES.	DATE 7-25-66

MS4939 X