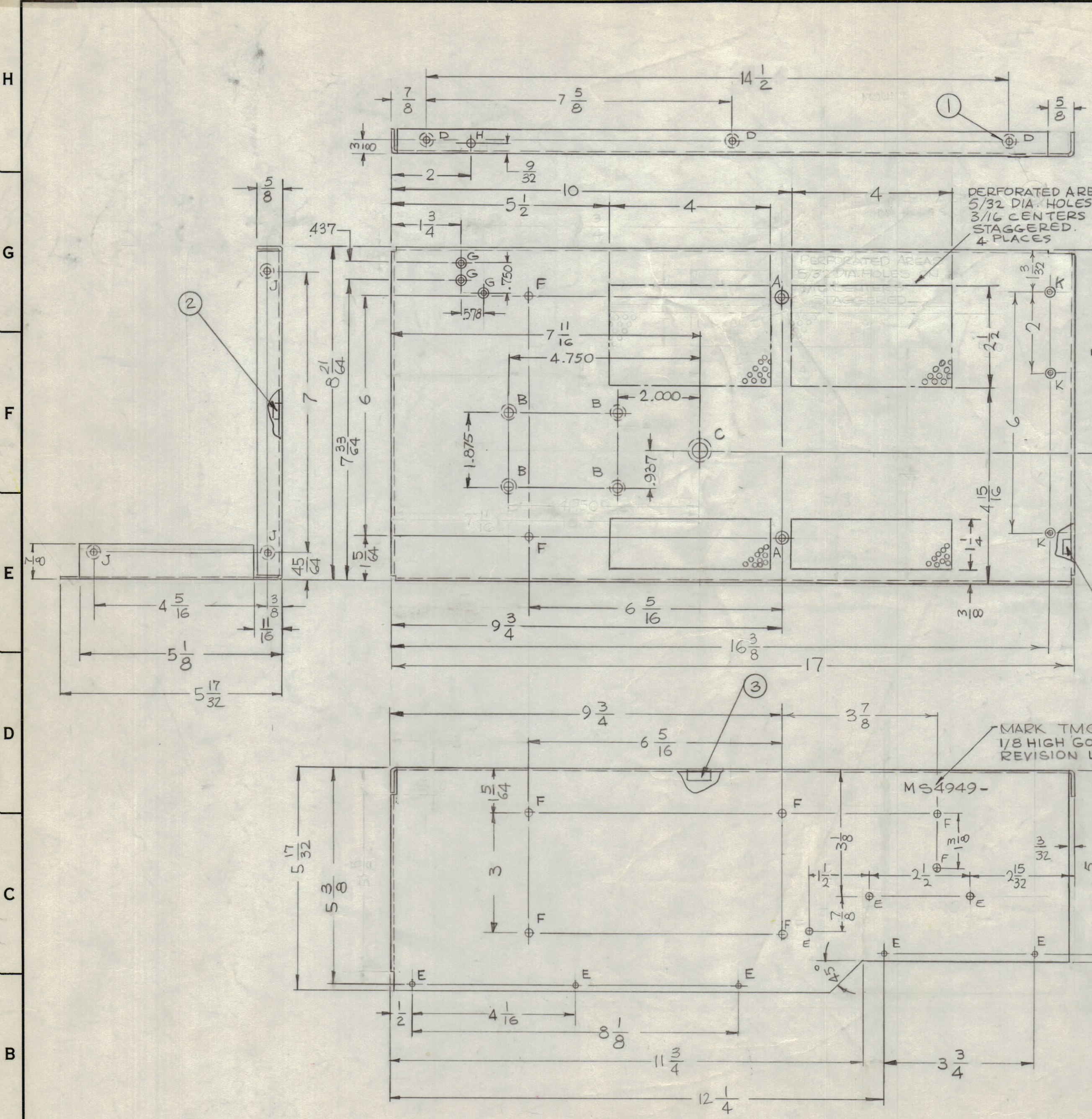


REVISIONS						
ZONE	SYM	DESCRIPTION	DATE	E.M.N. NO.	DRAFT	CHKD
	X1	DIM REVISED	6-3-66	-	WPL	
	X2	REVISED COMPLETELY	6/16/66	X2	HJA	JCB
	X3	⊙D" HOLES CHG TO "J" HOLS., ⊙E, ⊙K HOLS ADDED	6/16/66	-	JC	JCB
	X4	⊙F" HOLE ADDED	6/16/66	-	JC	JCB
4C	X5	3E HOLES ADDED, 1F HOLE ADDED	7-13-66	X5	MJ	JCB
	X6	PERFORATED AREA 2 1/2 WAS 1-7/8	8-4-66	X6	JBC	JCB
E4,5	X7	ADDED 2 PERFORATED AREAS F DIMS	8-22-66	X7	JBC	JCB
G3	X8	1K WAS E HOLE	10-31-66	X8	JBC	JCB
	Ø	ORIGINAL RELEASE FOR PRODUCTION	11/18/66	Ø	CV	



HOLE	DESCRIPTION.	REQ.
A	.169 DIA THRU, C'SK 82° TO .337 DIA.	2
B	.250 - .253 DIA.	4
C	.413 - .416 DIA.	1
D	.191 - .194 DIA.	3
E	11/64 DIA.	8
F	13/64 DIA.	8
G	.120 DIA THRU, C'SK 82° TO .230 DIA.	3
H	7/32 DIA.	1
J	.221 - .224 DIA.	6
K	.144 DIA. THRU, C'SK 82° TO .284 DIA.	3

MS4949

REF: TMC DWG LD2126

REQ'D.	ITEM	PART NUMBER	DESCRIPTION	SYMBOL
6	4	NT129-832-4	NUT, PLAIN SPLINE	J
1	3	NT129-524-4	NUT, PLAIN SPLINE	C
4	2	NT129-1032-4	NUT, PLAIN SPLINE	B
3	1	NT129-632-4	NUT, PLAIN SPLINE	D

BUDETTI		LIST OF MATERIAL	
MATERIAL .081 ALUMINUM 5052-H32		THE TECHNICAL MATERIEL CORP. MAMARONECK, NEW YORK	
FINISH S404 IRIDITE 14-2 AL COAT		TITLE PLATE, SIDE, RIGHT	
UNLESS OTHERWISE SPECIFIED DIMENSIONS ARE IN INCHES AND INCLUDE CHEMICALLY APPLIED OR PLATED FINISHES		DRAWN GDL	DATE 5-10-66
DECIMALS .x ± .05 .xx ± .01 .xxx ± .005		CHECKED JCB	DATE 11-17-66
FRACTIONS ± 1/64 ANGLES ± 0° 30'		ELECT. DES. JCB	DATE 11-17-66
TOLERANCES		MECH. DES. JCB	DATE 11-17-66
THE CONTENTS OF THIS DRAWING ARE THE EXCLUSIVE PROPERTY OF THE TECHNICAL MATERIEL CORP. ITS UNAUTHORIZED USE OR REPRODUCTION IN WHOLE OR IN PART IS STRICTLY FORBIDDEN.		FINAL APPROVAL [Signature]	
NOTES		DATE 11-17-66	
		SHEET	
		REV. LTR.	

UNLESS OTHERWISE SPECIFIED:

1. USE MATERIAL THICKNESS FOR MAXIMUM RADIUS ON ALL BENDS
2. ALL ANGULAR BENDS 90 DEGREES
3. REMOVE ALL BURRS AND SHARP EDGES
4. MOUNT INSERTS AFTER FINISHING

1	TAA-2.5K	BMA 127
QTY./UNIT	MODEL USED ON	ASS'Y. NO.
SCALE	CODE	