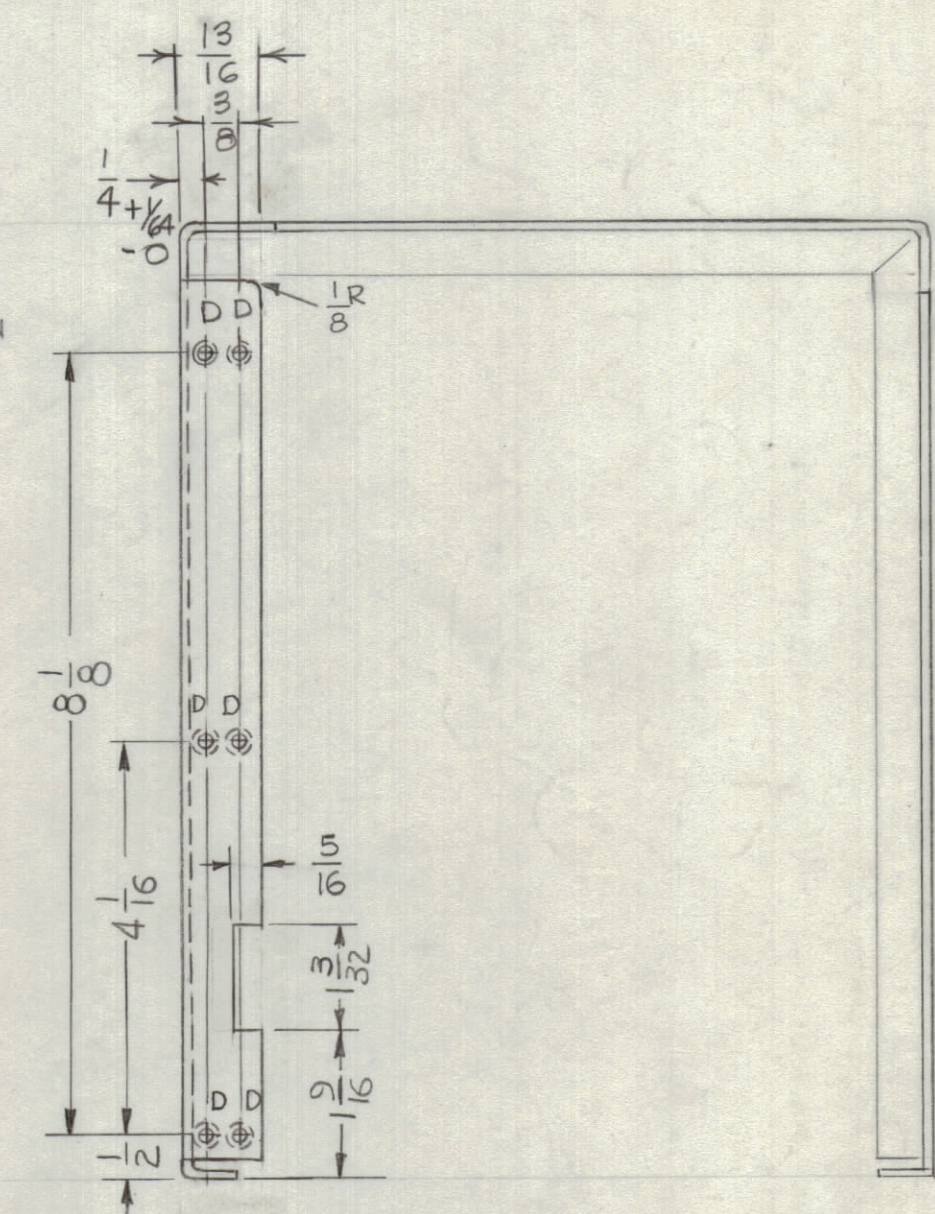
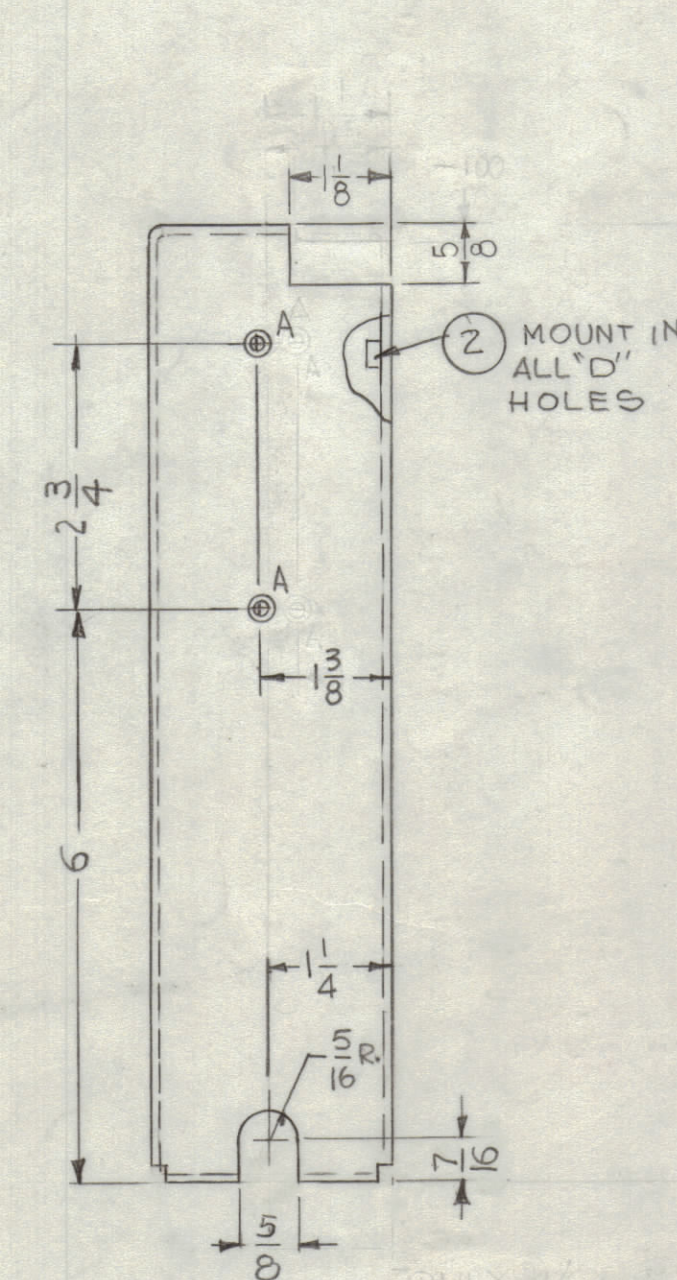
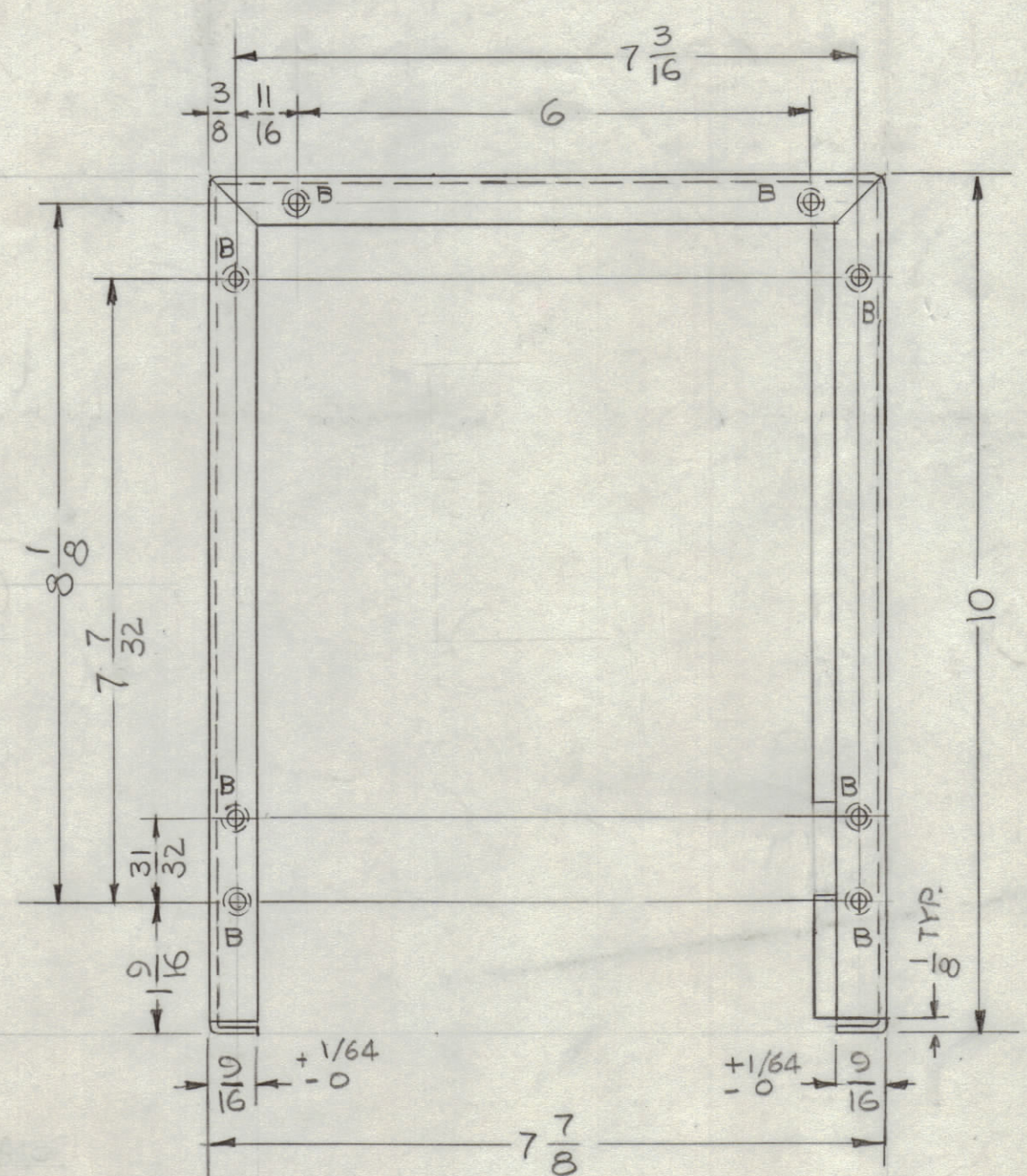
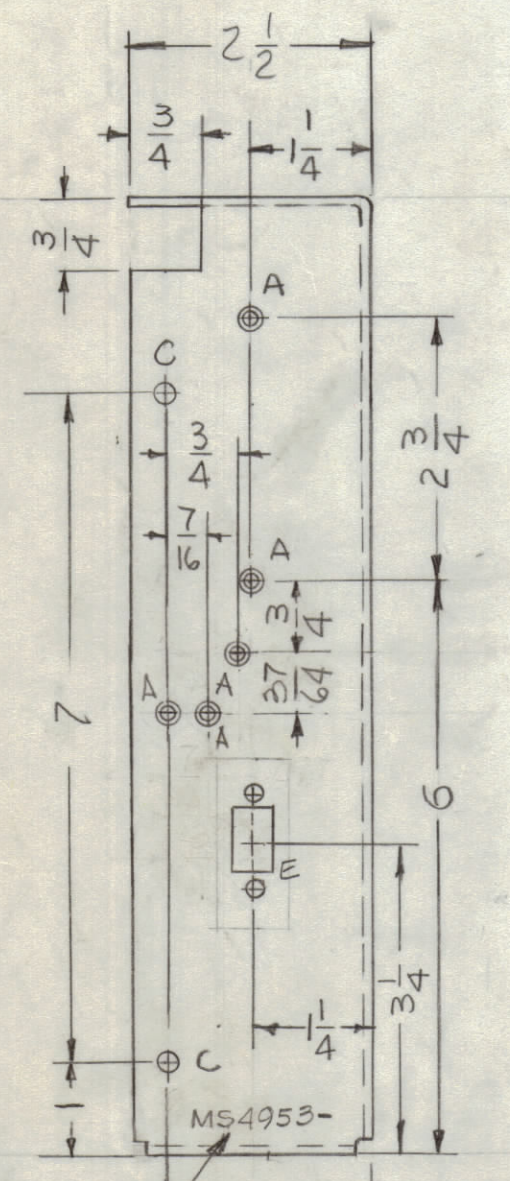
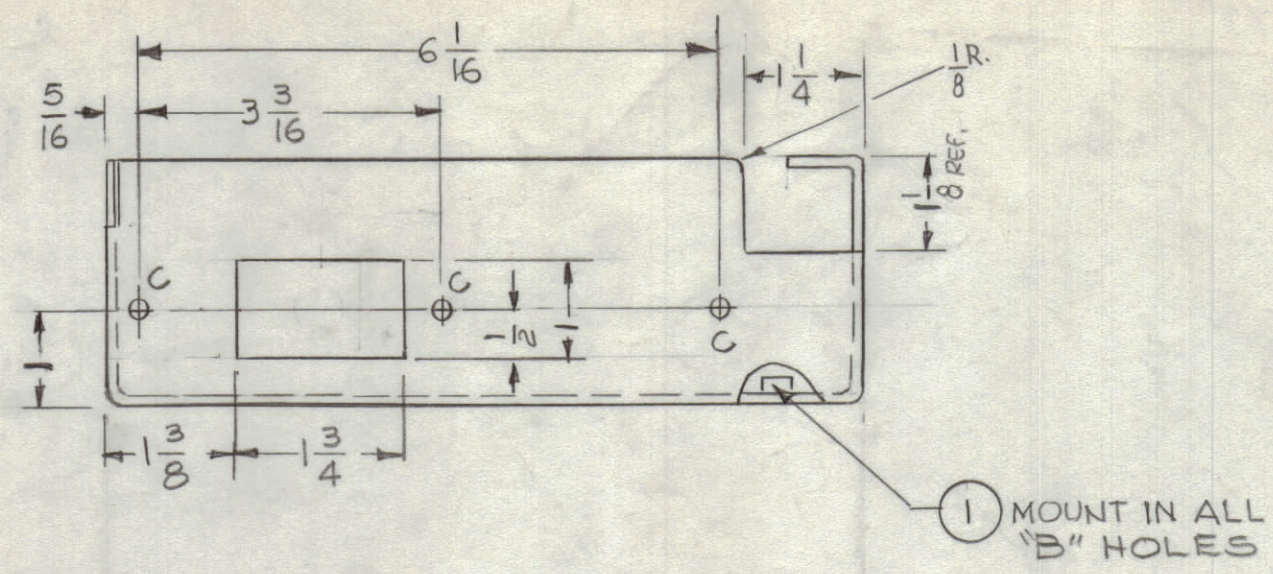
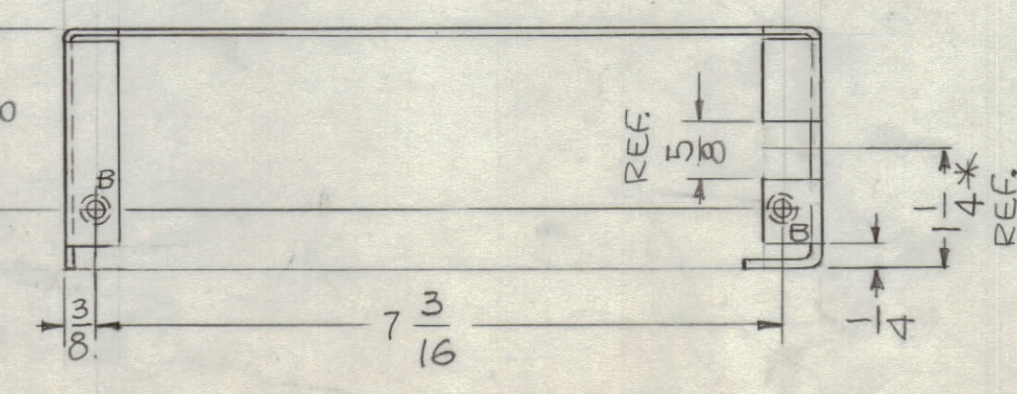
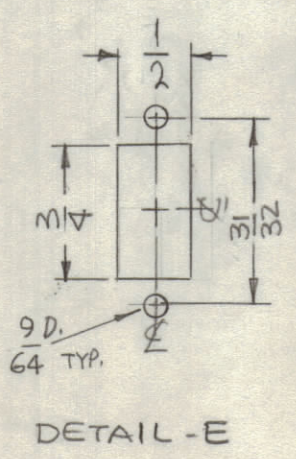


REVISIONS							
ZONE	SYM	DESCRIPTION	DATE	E.M.N. NO.	DRAFT	CHKD	APPD
	X1	DIM CLARIFIED	6.6.66	-H	WHD		
	X2	DWG. CLARIFIED	6.14.66	X2	HAA	OCB	MB
	X3	1/8 X 5/8 NOTCH, WAS V8 X 1	7.6.66	-H	JC	OCB	MB
	X4	E DETAIL ADDED, 1/8 BRADDED, 1/8 REF. WAS 1"	7.10.66	X4	MB		
	X5	CONNECTOR CUTOUT DIM. 1/2 WAS 7/16	7.30.66	X5	MB		
	Ø	ORIGINAL RELEASE FOR PRODUCTION	11.11.66	-H	WHD		



HOLE	DESCRIPTION	REQ.
A	.120 DIA C'SK B2° TO .230 DIA.	7
B	.221 - .224 DIA.	10
C	13/64 DIA	5
D	.191 - .194 DIA	6
E	SEE DETAIL	1



- UNLESS OTHERWISE SPECIFIED:
- USE MATERIAL THICKNESS FOR MAXIMUM RADIUS ON ALL BENDS
 - ALL ANGULAR BENDS 90 DEGREES
 - REMOVE ALL BURRS AND SHARP EDGES
 - MOUNT INSERTS AFTER FINISHING

TLAA-2.5K		
QTY./UNIT	MODEL USED ON	ASS'Y. NO.
SCALE	CODE	
1:2	A	
THE CONTENTS OF THIS DRAWING ARE THE EXCLUSIVE PROPERTY OF THE TECHNICAL MATERIEL CORP. ITS UNAUTHORIZED USE OR REPRODUCTION IN WHOLE OR IN PART IS STRICTLY FORBIDDEN.		

REF: LD2129		6 2 NT129-632-4 NUT, PLAIN SPLINE D	
		10 1 NT129-832-4 NUT, PLAIN SPLINE B	
REQ'D.	ITEM	PART NUMBER	DESCRIPTION
BUDETTI LIST OF MATERIAL			
MATERIAL		THE TECHNICAL MATERIEL CORP.	
.081THK ALUMINUM 5052-H32		MAMARONECK, NEW YORK	
FINISH		TITLE	
5404 YEL. IRIDITE		CHASSIS, MTG. CAP.	
UNLESS OTHERWISE SPECIFIED DIMENSIONS ARE IN INCHES AND INCLUDE CHEMICALLY APPLIED OR PLATED FINISHES		DRAWN	DATE
		G.D.L.	5-13-66
		CHECKED	DATE
		OCB	
DECIMALS		ELECT. DES.	DATE
.X ± .05 ± 1/64		MB	11-9-66
.XX ± .01 ± 1/64		MECH. DES.	DATE
.XXX ± .005 ± 0° 30'		OCB	11-9-66
		SHEET	MS4953
		REV. LTR.	Ø

MS4953 Ø