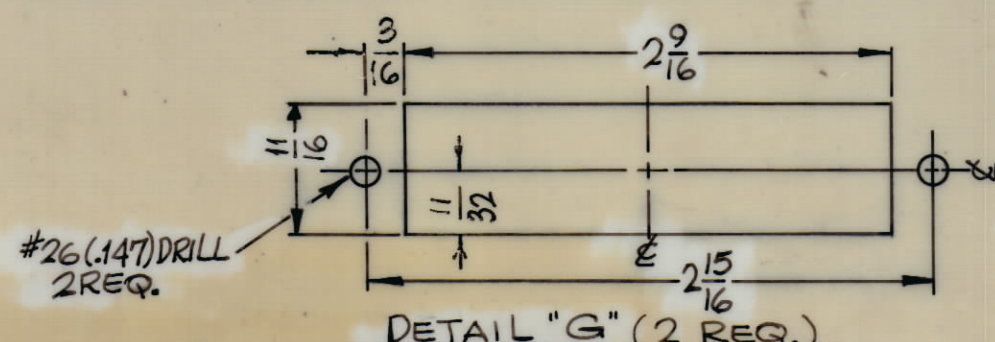
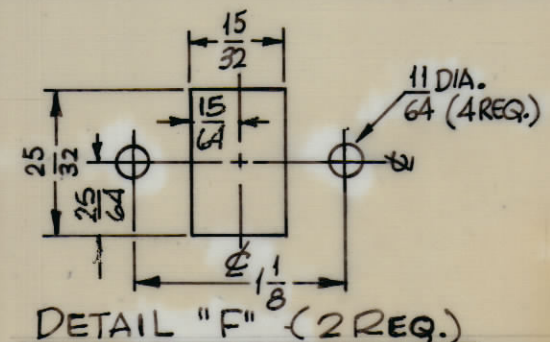
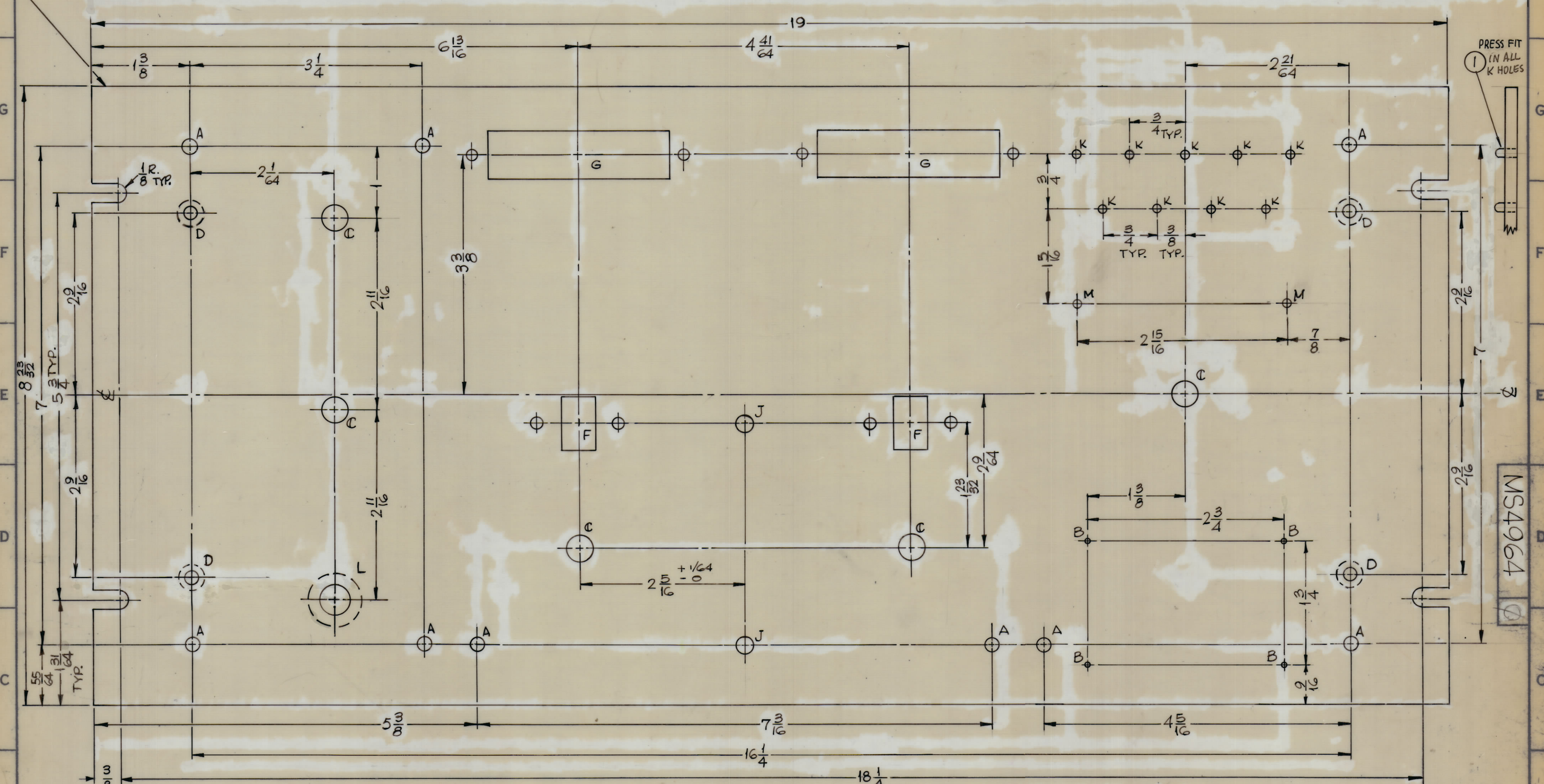


ZONE	SYM	DESCRIPTION	DATE	E.M.N. NO.	DRAFT	CHKD	APPD
	X	EXPERIMENTAL RELEASE	6-6-66	-M	HLA	JKB	JKB
	X1	K HOLES WERE VB, ITEM 1 ADDED	9-16-66	X1	HLA	JKB	aa
	X2	K HOLES WERE 1.25 ± .005	9-27-66	X2	HLA	JKB	JKB
	Ø	ORIGINAL RELEASE FOR PRODUCTION	11-11-66	Ø	4W	JKB	JKB

MARK TMC PART NO.
(MS4964) 1/8" HIGH GOTHIC
W/LATEST REV. LETTER.
ON REAR



HOLES	DESCRIPTION	REQ.
A	13/64 DIA.	9
B	.078 DIA.	4
C	3/8 DIA.	5
D	DRILL .196 DIA. C'SINKER 2° X .390 DIA.	4
F	SEE DETAIL	2
G	SEE DETAIL	2
J	1/4 DIA.	2
K	.123 ± .006	9
L	7/16 DIA C'BORE 3/4" X 3/32 DP FROM REAR OF PANEL	1
M	1/8 DIA.	2

FRONT VIEW SHOWN

REF. LD2100

REQ'D.	ITEM	PART NUMBER	DESCRIPTION	SYMBOL
9	1	PX998	ILLUMINATOR, BAND	K

F.BUDETTI LIST OF MATERIAL

MATERIAL	TITLE
3/16 THICK ALUMINUM 2024-T3	THE TECHNICAL MATERIEL CORP. MAMARONECK, NEW YORK
SEE NOTES	PANEL, FRONT

DRAWN	DATE	FINAL APPROVAL	DATE
H. Austin	6-2-66	(Signature)	11/11/66
CHECKED		(Signature)	
ELECT. DEP.	DATE		
MECH. DEPT.	DATE		
	11-9-66		
	11-9-66		

UNLESS OTHERWISE SPECIFIED DIMENSIONS ARE IN INCHES AND INCLUDE CHEMICALLY APPLIED OR PLATED FINISHES

DECIMALS FRACTIONS
 .XX ± .01 ± 1/64
 .XXX ± .005 ± 1/84
 ANGLES ± 30'

- MACHINING:
- MILL ALL EDGES.
 - HOLES MUST BE DRILLED, UNLESS OTHERWISE SPECIFIED.
 - LATERAL BOW OF PANEL MUST BE KEPT TO .031 TOLERANCE.
 - PANEL MUST BE FREE OF ALL MACHINING MARKS, GOUGES AND SCRATCHES. IF NECESSARY, SAND FRONT OF PANEL WITH NO. 120 GRIT SANDPAPER.
- FINISH NOTES:
- S404 - IRIDITE 14-2 AL-COAT.
 - S114 - ZINC CHROMATE PRIMER) FRONT AND EDGES ONLY
 - S115 - SMOOTH GRAY ENAMEL

NOTES

THE CONTENTS OF THIS DRAWING ARE THE EXCLUSIVE PROPERTY OF THE TECHNICAL MATERIEL CORP. ITS UNAUTHORIZED USE OR REPRODUCTION IN WHOLE OR IN PART IS STRICTLY FORBIDDEN.