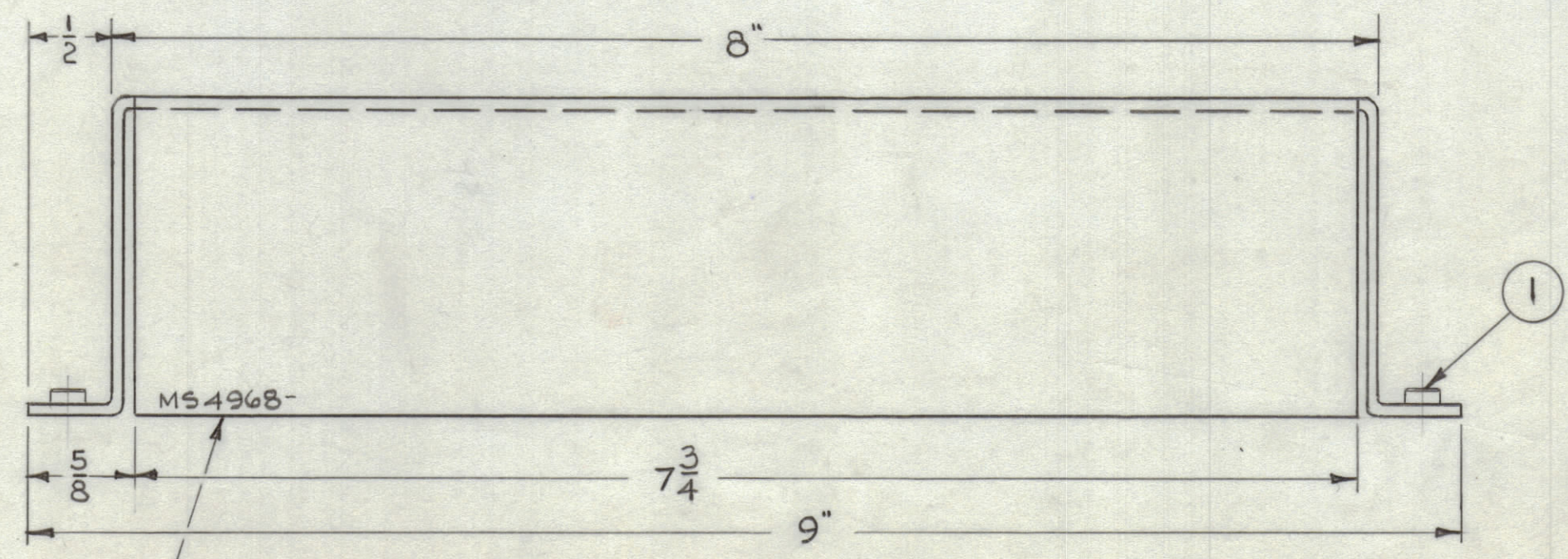
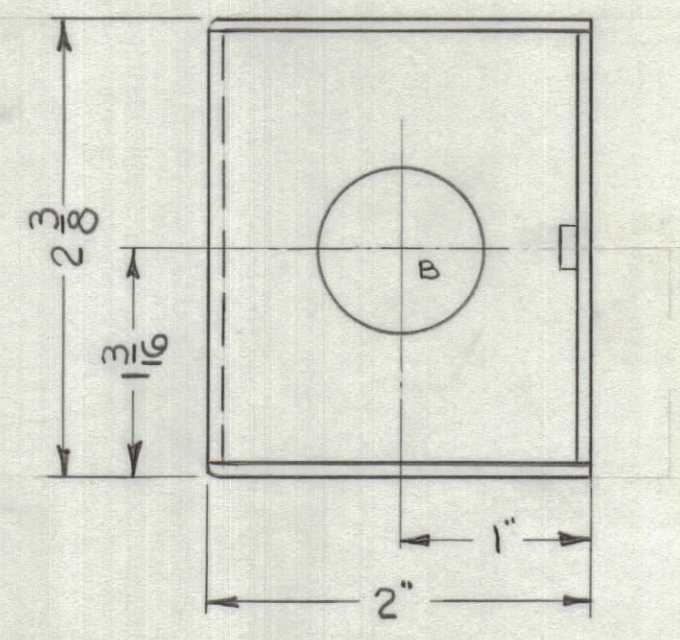
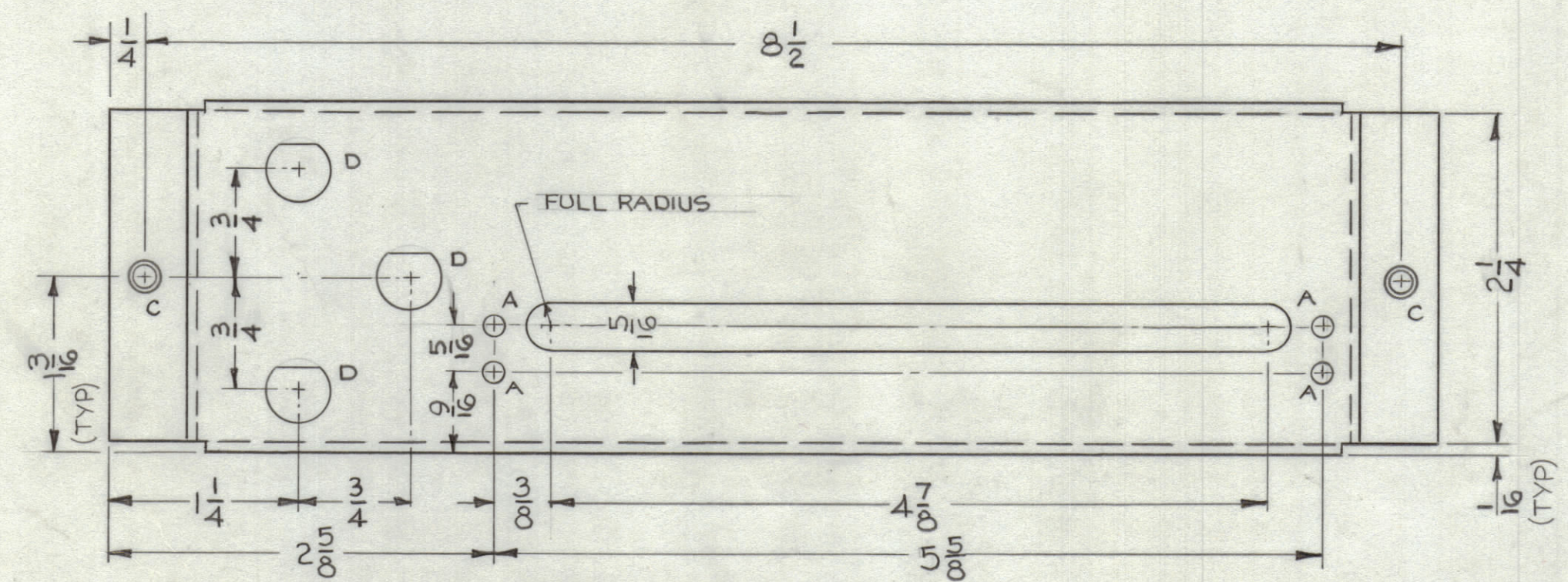
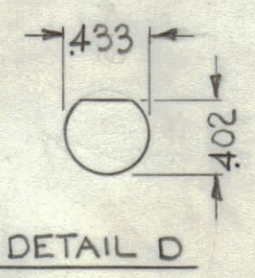


REVISIONS							
ZONE	SYM	DESCRIPTION	DATE	E.M.N. NO.	DRAFT	CHKD	APPD
	X	EXP. RELEASE	6/29/66				
	X <sub>1</sub>	MODEL WAS DDR 7M	11/16/66			JL	
	Ø	ORIGINAL RELEASE FOR PRODUCTION	12/2/66			CV	



MARK TMC PT. NO. 1/8 HIGH GOTHIC W/LATEST REV. LETTER



HOLE	DIAMETER	REQ.
A	9/64	4
B	7/8	1
C	.191-.194	2
D	SEE DETAIL	3

- UNLESS OTHERWISE SPECIFIED:
1. USE MATERIAL THICKNESS FOR MAXIMUM RADIUS ON ALL BENDS
  2. ALL ANGULAR BENDS 90 DEGREES
  3. REMOVE ALL BURRS AND SHARP EDGES
  4. MOUNT INSERTS AFTER FINISHING

NOTES

QTY./UNIT	MODEL USED ON	ASS'Y. NO.
SCALE	CODE	

THE CONTENTS OF THIS DRAWING ARE THE EXCLUSIVE PROPERTY OF THE TECHNICAL MATERIEL CORP. ITS UNAUTHORIZED USE OR REPRODUCTION IN WHOLE OR IN PART IS STRICTLY FORBIDDEN.

REF. LD 2106

REQ'D.	ITEM	PART NUMBER	DESCRIPTION	SYMBOL
2	1	NT129-632-4	NUT, SPLINE	

STURMER LIST OF MATERIAL

MATERIAL	.064 ALUMINUM, 5052-H32	THE TECHNICAL MATERIEL CORP. MAMARONECK, NEW YORK
FINISH	S404 YELLOW IRIDITE	TITLE CHASSIS, COMPONENT MOUNTING

UNLESS OTHERWISE SPECIFIED DIMENSIONS ARE IN INCHES AND INCLUDE CHEMICALLY APPLIED OR PLATED FINISHES	DRAWN	DATE 6-29-66	FINAL APPROVAL	DATE 12/1/66
DECIMALS .X ± .05 .XX ± .01 .XXX ± .005	CHECKED	DATE 6/29/66	MS 4968	Ø
FRACTIONS ± 1/64 ANGLES ± 0° 30'	ELECT. DES.	DATE		
	MECH. DES.	DATE 12/1/66		

MS4968