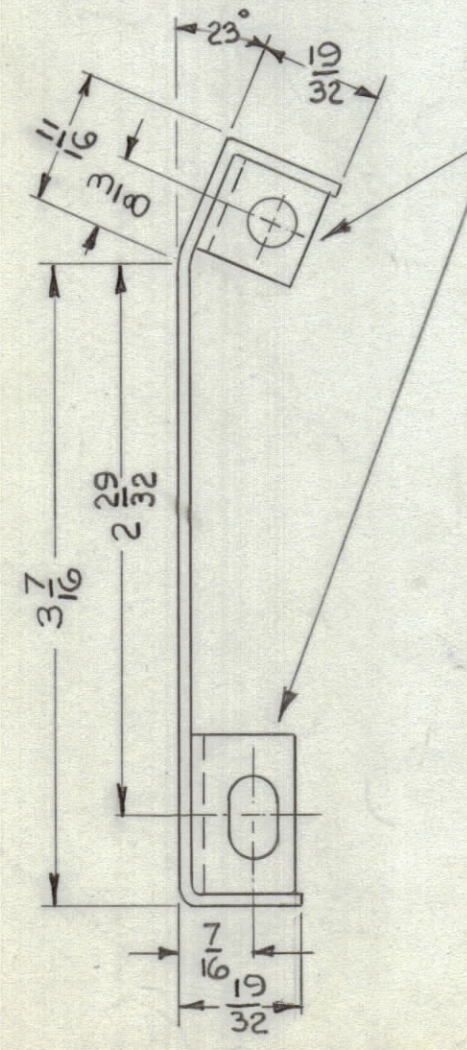
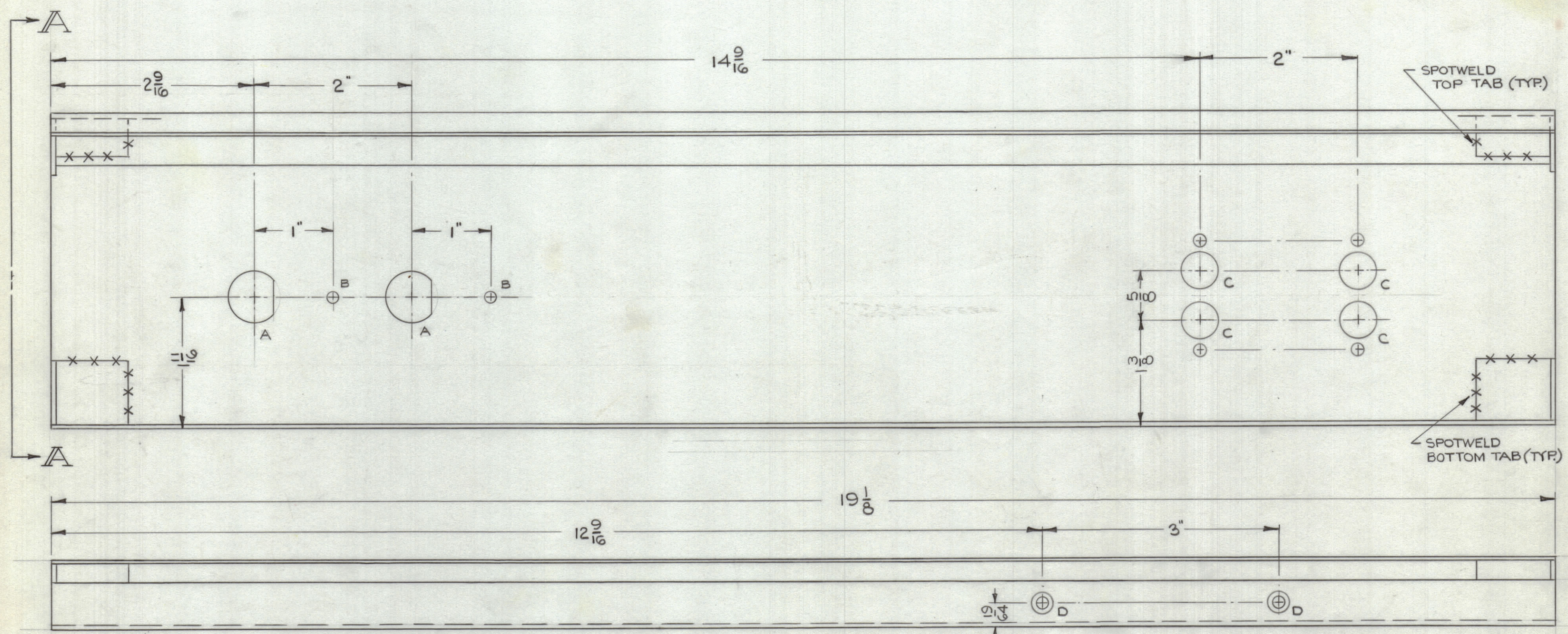


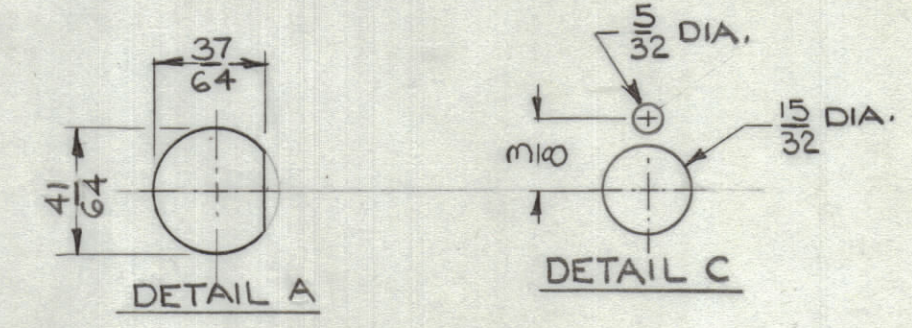
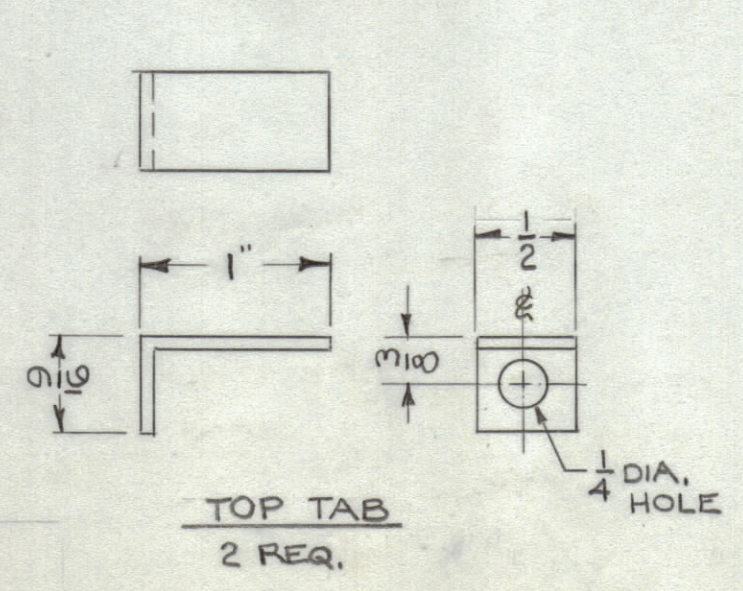
| REVISIONS | | | | | | | |
|-----------|-----|---------------------------------|---------|------------|-------|------|------|
| ZONE | SYM | DESCRIPTION | DATE | E.M.N. NO. | DRAFT | CHKD | APPD |
| Ø | | ORIGINAL RELEASE FOR PRODUCTION | 6.23.66 | -# | WHD | | JLO |



| HOLE | DIAMETER | REQ. |
|------|---|------|
| A | SEE DETAIL A | 2 |
| B | 9/64 | 2 |
| C | SEE DETAIL C | 4 |
| D | .144 DIA. THRU & 82° C SINK TO .284 DIA. | 2 |

3- S520-BLUE GREY TEX. VINYL ENAMEL } FOR FRONT OF
 2- S114-ZINC CHROMATE PRIMER } PANEL & RETURNS
 1- COPPER FLASH - ALL SURFACES } ONLY

NOTES



REF. LD 2101 (MODIFIED MS2639 AS SHOWN)

| REQ'D. | ITEM | PART NUMBER | DESCRIPTION | SYMBOL |
|---|------|--------------|--|--------|
| LIST OF MATERIAL | | | | |
| MATERIAL 16 GA. STEEL TYPE & TEMPER - MILD | | | THE TECHNICAL MATERIEL CORP. MAMARONECK, NEW YORK | |
| FINISH SEE NOTES | | | TITLE PANEL, FRONT, MACHINING | |
| DRAWN <i>[Signature]</i> | | DATE 6-23-66 | FINAL APPROVAL <i>[Signature]</i> | |
| CHECKED <i>[Signature]</i> | | DATE 6/22/66 | DATE 6/23/66 | |
| ELECT. DES. <i>[Signature]</i> | | DATE | MS 4982 | |
| MECH. DES. | | DATE | REV. LTR. | |

| Q'TY./UNIT | MODEL USED ON | ASS'Y. NO. |
|------------|---------------|------------|
| 1 | RAK-7D | AX 644 |
| SCALE FULL | CODE | |

THE CONTENTS OF THIS DRAWING ARE THE EXCLUSIVE PROPERTY OF THE TECHNICAL MATERIEL CORP. ITS UNAUTHORIZED USE OR REPRODUCTION IN WHOLE OR IN PART IS STRICTLY FORBIDDEN.

MS 4982