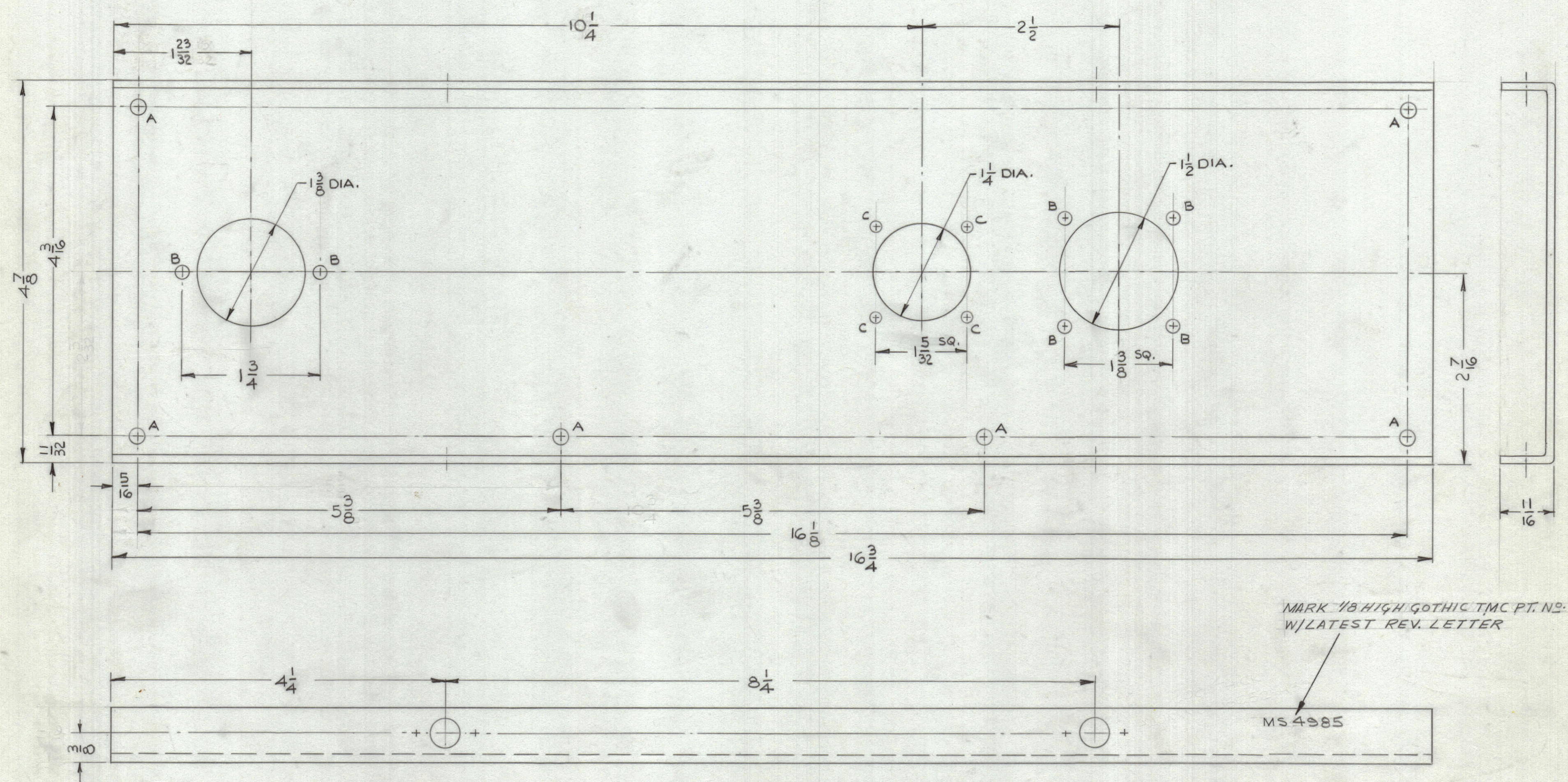
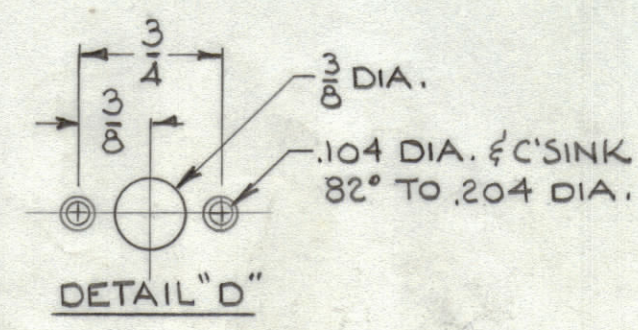


REVISIONS							
ZONE	SYM	DESCRIPTION	DATE	E.M.N. NO.	DRAFT	CHKD	APPD
	X	EXPERIMENTAL RELEASE	6/7/66		JLB		
	Ø	ORIGINAL RELEASE FOR PRODUCTION	9/12/66		LHW		JLB



HOLE	DIAMETER	REQ.
A	13/64	6
B	1/16	6
C	9/64	4
D	SEE DETAIL	4



MARK 1/8 HIGH GOTHIC TMC PT. NO. W/LATEST REV. LETTER

MS 4985

MS 4985

REF: LD 2113

REQ'D.	ITEM	PART NUMBER	DESCRIPTION	SYMBOL
EATON LIST OF MATERIAL				
MATERIAL			THE TECHNICAL MATERIEL CORP. MAMARONECK, NEW YORK	
.081 THICK ALUMINUM, 5052-H32			TITLE	
FINISH			S404 YELLOW IRIDITE	
UNLESS OTHERWISE SPECIFIED DIMENSIONS ARE IN INCHES AND INCLUDE CHEMICALLY APPLIED OR PLATED FINISHES			DRAWN <i>JLB</i>	
DECIMALS .XX ± .05			DATE 6/7/66	
FRACTIONS ± 1/64			CHECKED <i>JLB</i>	
ANGLES ± 0° 30'			DATE 9/9/66	
TOLERANCES			ELECT. DES. <i>JLB</i>	
			MECH. DES. <i>JLB</i>	
			DATE 9/9/66	
			SHEET	
			REV. LTR.	

LSCA-1		
Q'TY./UNIT	MODEL USED ON	ASS'Y. NO.
SCALE FULL	CODE	SK-3233-5

THE CONTENTS OF THIS DRAWING ARE THE EXCLUSIVE PROPERTY OF THE TECHNICAL MATERIEL CORP. ITS UNAUTHORIZED USE OR REPRODUCTION IN WHOLE OR IN PART IS STRICTLY FORBIDDEN.

NOTES