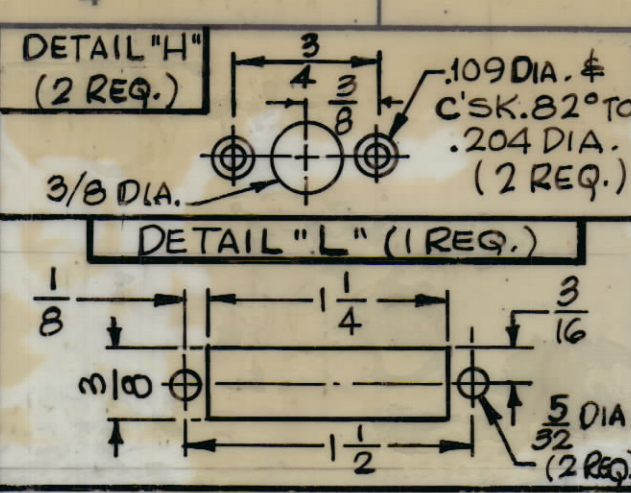
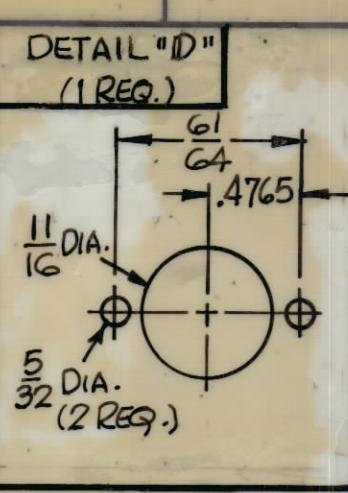
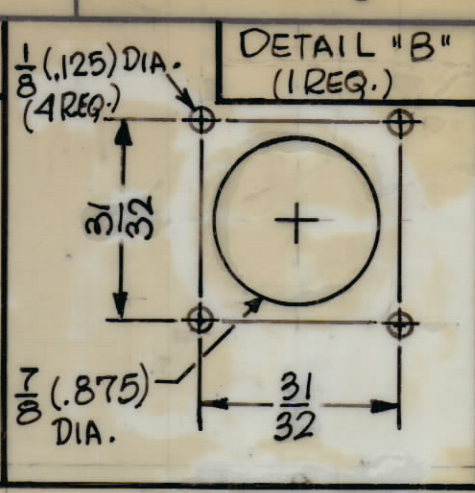
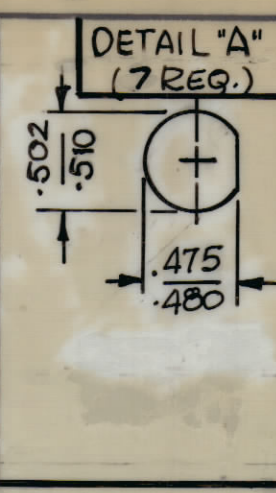
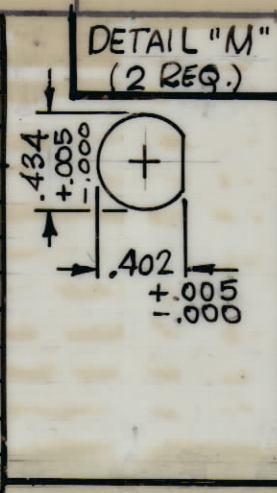
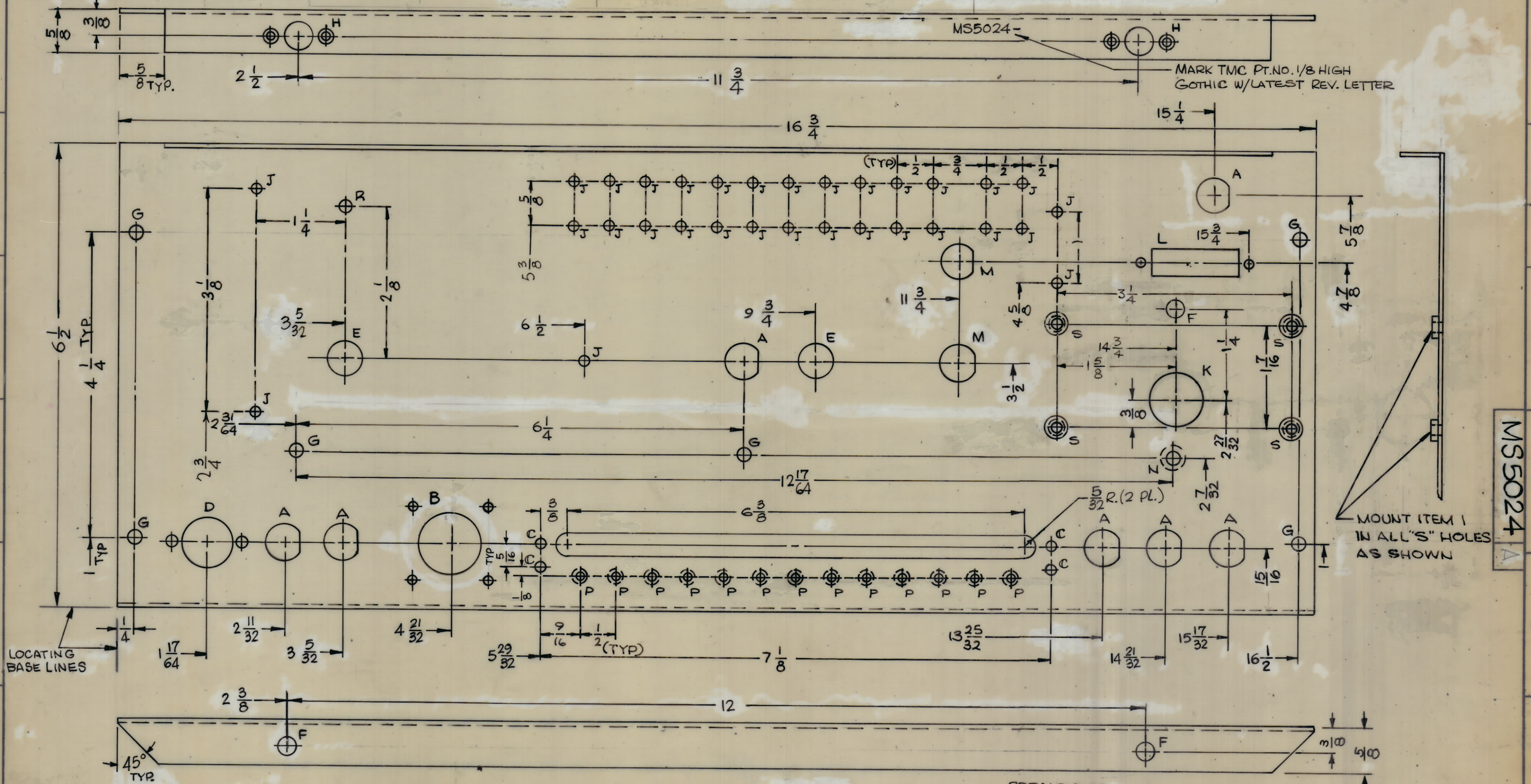


HOLE	DESCRIPTION	REQ'D.
A	SEE DETAIL	7
B	SEE DETAIL	1
C	5/32 DIA.	4
D	SEE DETAIL	1
E	1/2 DIA.	2
F	1/4 DIA.	3
G	3/16 DIA.	7
H	SEE DETAIL	2
J	9/64 DIA.	31
K	3/4 DIA.	1
L	SEE DETAIL	1
M	SEE DETAIL	2



REVISIONS							
ZONE	SYM	DESCRIPTION	DATE	E.M.N. NO.	DRAFT	CHKD	APPD
	X <sub>1</sub>	EXPERIMENTAL RELEASE	8/16/66	X	R/E	file	
	X <sub>1</sub>	ADD. DETAIL "M"; 22-224 HOLES ON DETAIL "K" WERE 1/8 DIA. & REDIMENSIONED & CLARIFIED DWG.	9/14/66	X <sub>1</sub>	KLA	file	
	Ø	ORIGINAL RELEASE FOR PRODUCTION	9/19/66	Ø	RME	file	
	A	1/2" HOLE WAS 15/32. QTY "I" HOLES WERE 1 "J" HOLE ADDED WAS 5/16 DIA. "P" & "Q" HOLES ADDED QTY "A" HOLE WAS 6/16 DIA. DIM WAS 3/16. IT ADDED ADDED 1/2" HOLE & LOCATING DIM.	1-4-67	17592	WU	file	



HOLE	DESCRIPTION	REQ'D.
N	.169 DIA. C'SK 82° TO .390	1
P	.109 DIA. C'SK 82° TO .204	13
R	11/64 DIA	1
S	.221-.224 DIA	4

UNLESS OTHERWISE SPECIFIED:  
 1. USE MATERIAL THICKNESS FOR MAXIMUM RADIUS ON ALL BENDS  
 2. ALL ANGULAR BENDS 90 DEGREES  
 3. REMOVE ALL BURRS AND SHARP EDGES

NOTES

1	SMEA-1	
Q'TY./UNIT	MODEL USED ON	ASS'Y. NO.
SCALE	CODE	
1:1	A	
THE CONTENTS OF THIS DRAWING ARE THE EXCLUSIVE PROPERTY OF THE TECHNICAL MATERIEL CORP. ITS UNAUTHORIZED USE OR REPRODUCTION IN WHOLE OR IN PART IS STRICTLY FORBIDDEN.		

REF: LD2120	4	1	NT129-832-4	NUT, PLAIN, SPLINE	S
REQ'D.	ITEM	PART NUMBER	DESCRIPTION	SYMBOL	
- POSE					
MATERIAL			LIST OF MATERIAL		
.064 THK ALUMINUM 5052-H 32			THE TECHNICAL MATERIEL CORP. MAMARONECK, NEW YORK		
FINISH			TITLE		
S404 YEL. IRIDIOTE			PLATE, REAR		
UNLESS OTHERWISE SPECIFIED DIMENSIONS ARE IN INCHES AND INCLUDE CHEMICALLY APPLIED OR PLATED FINISHES		DRAWN	DATE	FINAL APPROVAL	DATE
DECIMALS: .X ± .05, .XX ± .01, .XXX ± .005		G.D.L.	3/15/66	[Signature]	9/16/66
FRACTIONS: ± 1/64, ± 0° 30'		CHECKED	DATE		
TOLERANCES		FILED	DATE		
				MS5024	
				SHEET	REV. LTR.

MS5024

MOUNT ITEM 1 IN ALL "S" HOLES AS SHOWN