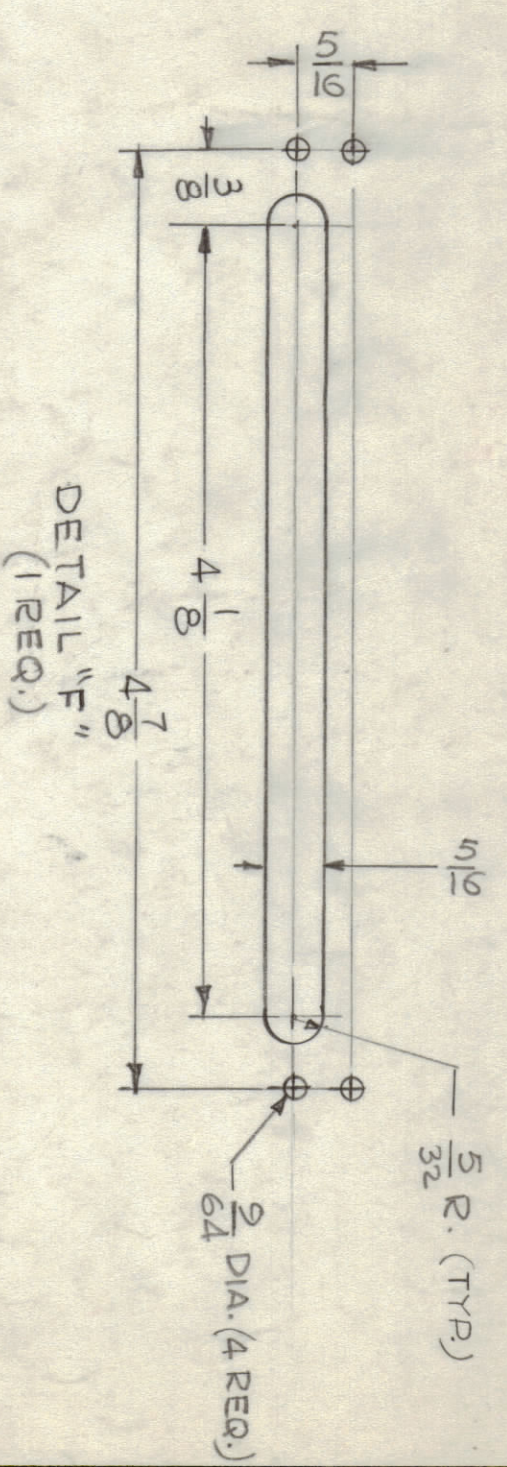
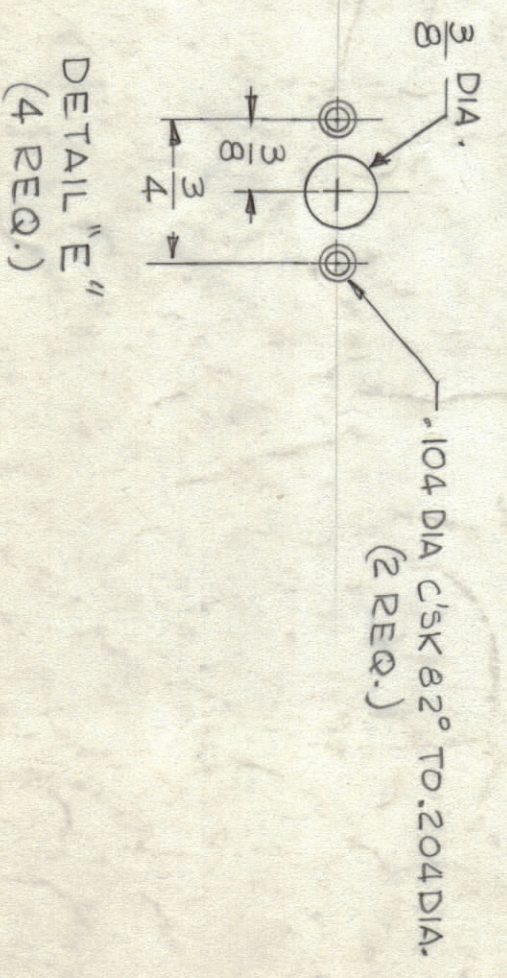
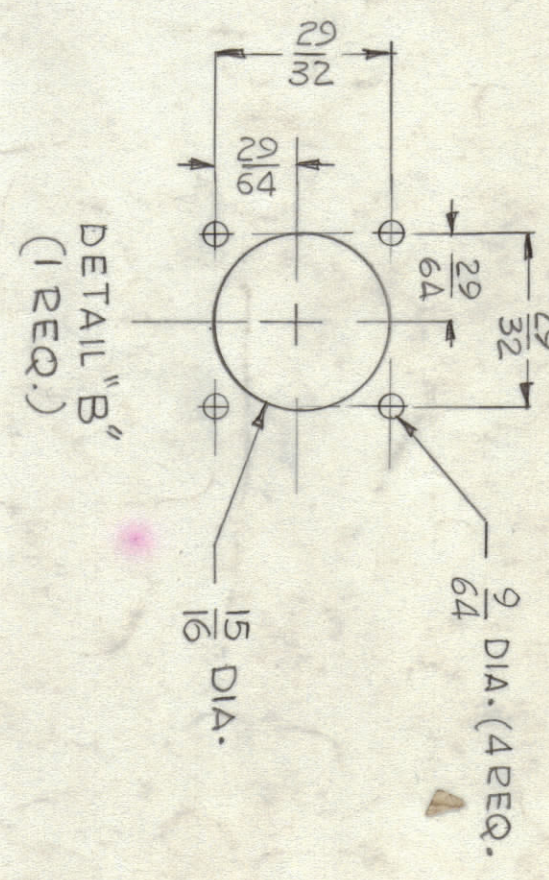


MARK TMC P/NO. 1/8 HIGH GOTHIC WITH LATEST REV. LETTER

M55026

HOLE	DESCRIPTION	REQ'D
A	.191 - .194 DIA	4
B	SEE DETAIL	1
C	1/64 DIA	8
D	9/64 DIA	4
E	SEE DETAIL	4
F	SEE DETAIL	1



REF: LD2122

QTY/UNIT	MODEL USED ON	ASBY NO.
1	MPA-1	

RECD.	ITEM	PART NUMBER	DESCRIPTION	SYMBOL
4	1	NT129-632-4	NUT PLAIN, SPLINE	A

MATERIAL	TITLE
.063 THK ALUMINUM 5052-H32	THE TECHNICAL MATERIEL CORP. MAMARONECK, NEW YORK

FINISH	DATE	DATE	DATE	DATE
SA04 YELLOW IRIDIUM	8-2-66	8-2-66	8-2-66	8-2-66

- UNLESS OTHERWISE SPECIFIED:
1. USE MATERIAL THICKNESS FOR MAXIMUM RADIUS ON ALL BENDS
 2. ALL ANGULAR BENDS 90 DEGREES
 3. REMOVE ALL BURRS AND SHARP EDGES
 4. MOUNT INSERTS AFTER FINISHING

NOTES

THE CONTENTS OF THIS DRAWING ARE THE EXCLUSIVE PROPERTY OF THE TECHNICAL MATERIEL CORP. ITS UNAUTHORIZED USE OR REPRODUCTION IN WHOLE OR IN PART IS STRICTLY FORBIDDEN.

ZONE	SYM	DESCRIPTION	DATE	E.M.N. NO.	SHAFT	CHNO	APRO
X		DETAIL RELOC. TMC P/N REVERSED	11/7/66		UHO		
		ORIGINAL RELEASE FOR PRODUCTION	11/11/66		UHO		

REVISIONS

M55026