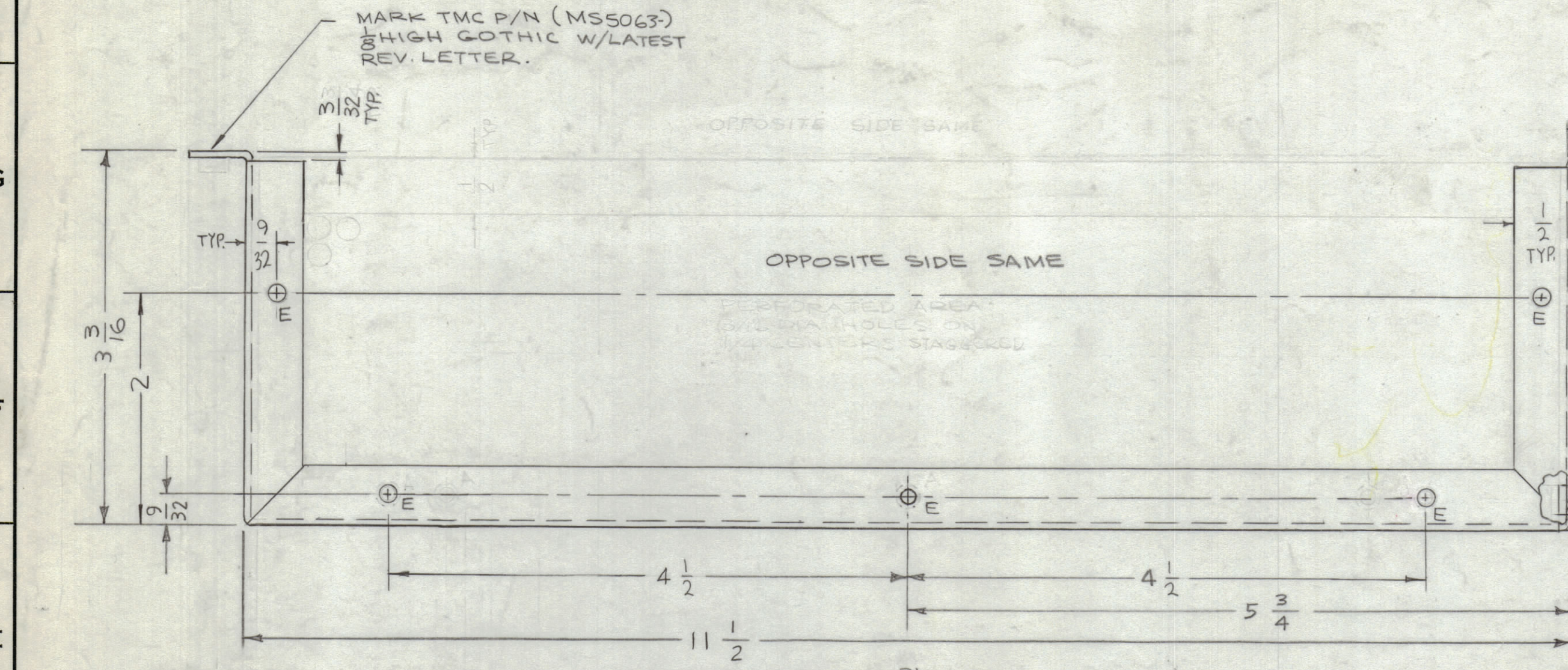
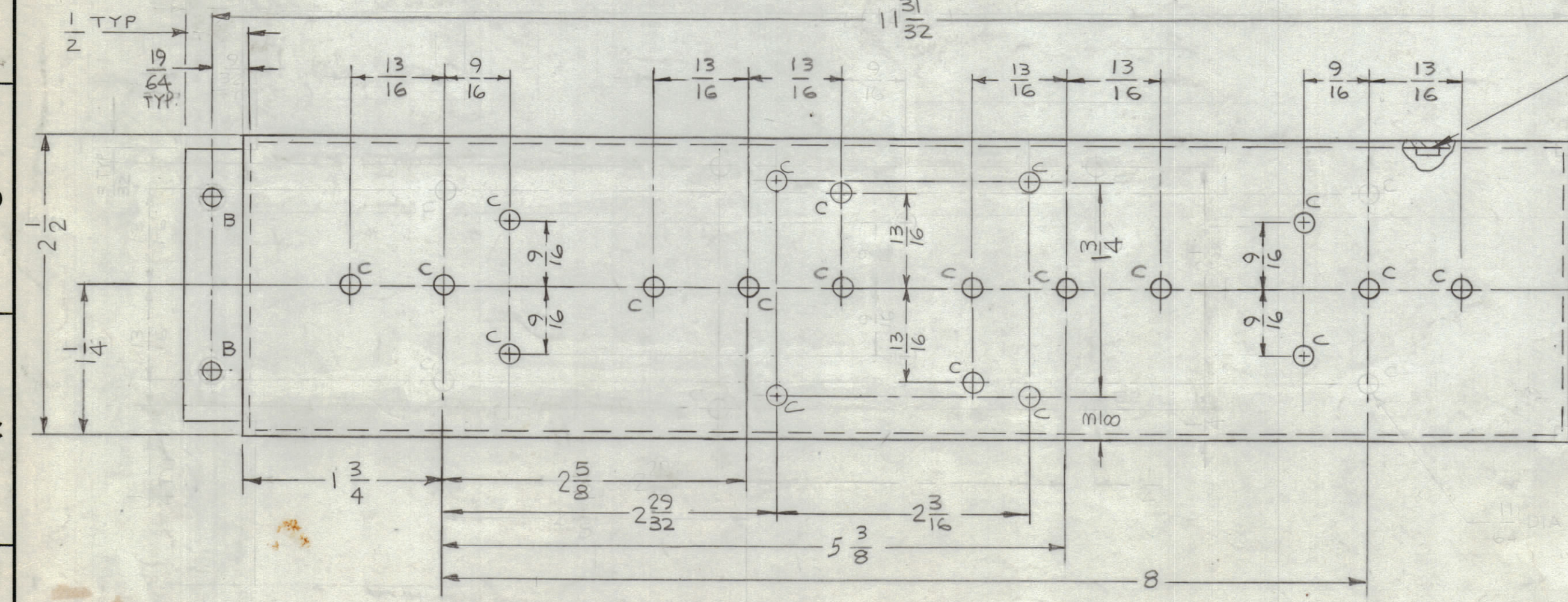


REVISIONS							
ZONE	SYM	DESCRIPTION	DATE	E.M.N. NO.	DRAFT	CHKD	APPD
	X	EXP RELEASE	8-30-66	X	JBC		
	X1	3/32 DIM & 1C HOLE ADDED, 1-1/4 DIM RELOCATED	9-26-66	X1	MS	MA	MA
	X2	4 A HOLES & 2 NTS RELOCATED	10-5-66	X2	MS	MA	MA
	X3	COMPLETELY REVISED	9-12-67	X3	MS	MA	MA
	X4	19/64 WAS 9/32	9-13-67	X4	MS	MA	MA
	X5	2 C HOLES RELOCATED	3-22-68	X5	MS	MA	MA
	Ø	ORIGINAL RELEASE FOR PRODUCTION	5/22/69	Ø	Ø	Ø	Ø



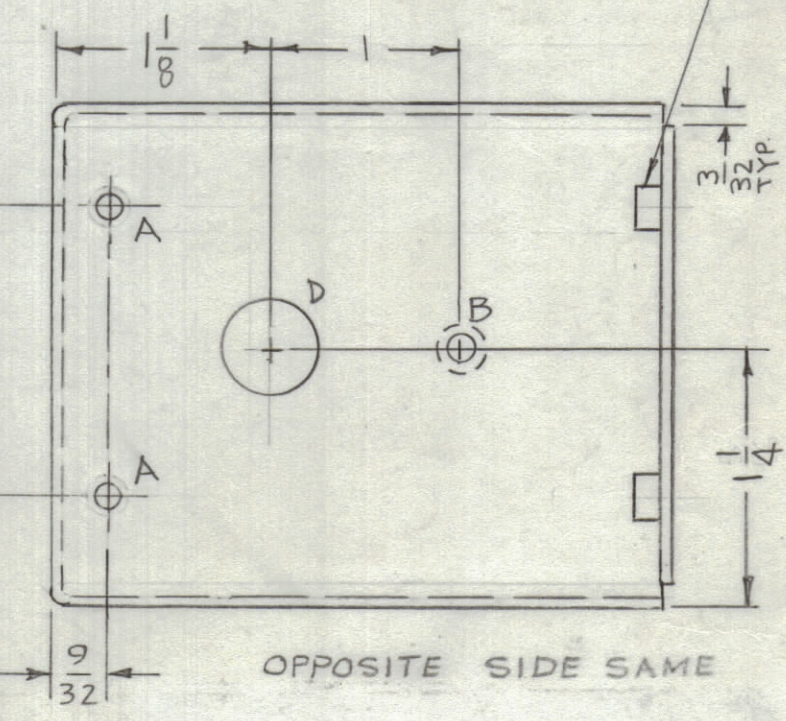
HOLE	DESCRIPTION	REQ
A	.191-.194 DIA.	4
B	.221-.224 DIA.	6
C	11/64 DIA	20
D	1/2 DIA.	2
E	.161-.164 DIA.	10



1 MOUNT IN ALL "A" HOLES

3 MOUNT IN ALL "E" HOLES

2 MOUNT IN ALL "B" HOLES



UNLESS OTHERWISE SPECIFIED:  
 1. USE MATERIAL THICKNESS FOR MAXIMUM RADIUS ON ALL BENDS  
 2. ALL ANGULAR BENDS 90 DEGREES  
 3. REMOVE ALL BURRS AND SHARP EDGES  
 4. MOUNT INSERTS AFTER FINISHING

REF: LD1500

10	3	NT129-440-4	NUT, PLAIN, SPLINE	E
6	2	NT129-832-4	NUT, PLAIN, SPLINE	B
4	1	NT129-632-4	NUT, PLAIN, SPLINE	A
REQ'D.	ITEM	PART NUMBER	DESCRIPTION	SYMBOL

F. BUDETTI LIST OF MATERIAL			
MATERIAL .064 THK ALUMINUM 5052 - H32		THE TECHNICAL MATERIEL CORP. MAMARONECK, NEW YORK	
FINISH S404 YEL. IRIDITE		TITLE BOX, FILTER	
DRAWN JBC	DATE 8-30-66	FINAL APPROVAL	DATE 5/22/69
CHECKED JBC	DATE 9/30/66		
ELECT. DES.	DATE	MS5063	Ø
MECH. DES.	DATE		
	SHEET		REV. LTR.

TFP-2.5K		
QTY/UNIT	MODEL USED ON	ASS'Y. NO.
SCALE 1:1	CODE A	S401-451 S401- S401-
THE CONTENTS OF THIS DRAWING ARE THE EXCLUSIVE PROPERTY OF THE TECHNICAL MATERIEL CORP. ITS UNAUTHORIZED USE OR REPRODUCTION IN WHOLE OR IN PART IS STRICTLY FORBIDDEN.		
DECIMALS .X ± .05 .XX ± .01 .XXX ± .005	TOLERANCES	FRACTIONS ± 1/64 ANGLES ± 0° 30'

NOTES

MS5063