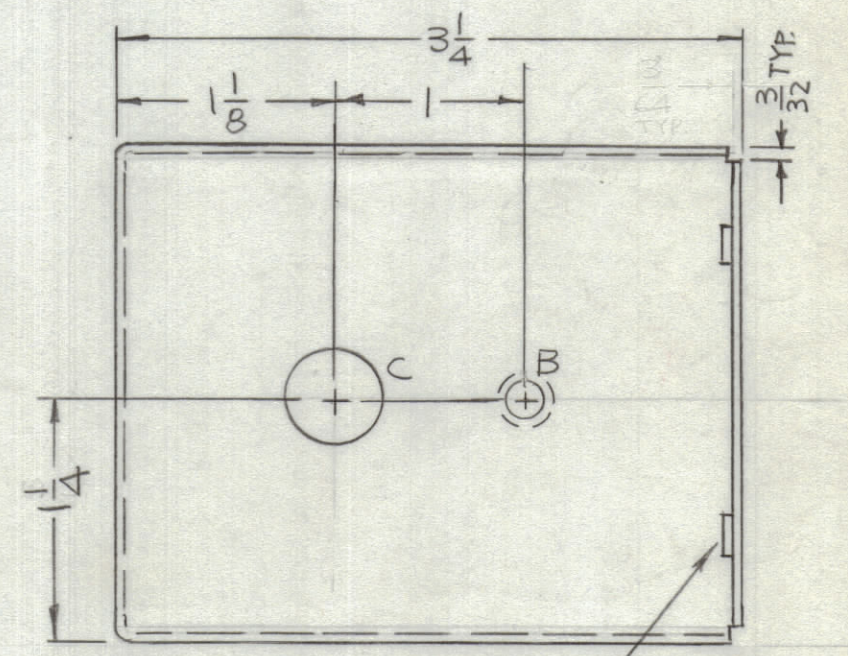
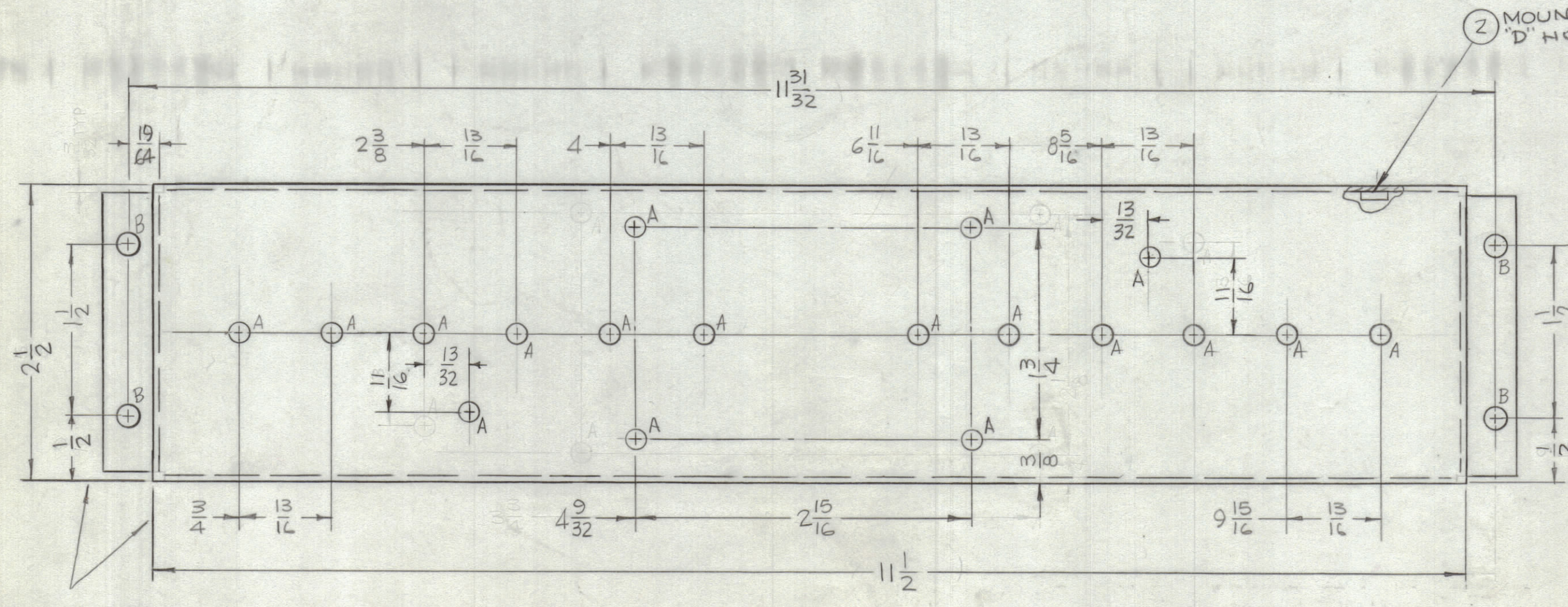


REVISIONS							
ZONE	SYM	DESCRIPTION	DATE	E.M.N. NO.	DRAFT	CHKD	APPD
	X	EXP. RELEASE	8-31-66	X			
	X1	4 A HOLES RELOCATED	10-6-66	X1			
	X2	COMPLETELY REVISED	9-12-67	X2			
	X3	19/64 WAS 9/32	9-13-67	X3			
	X4	1/2 WAS 9/16 (DIM ON B HOLES)	3-4-68	X4			
	Ø	ORIGINAL RELEASE FOR PRODUCTION	5/22/69				



HOLES:  
 A-11/64 DIA. (18 REQ.)  
 B-.221-.224 DIA. (6 REQ.)  
 C-1/2 DIA. (2 REQ.)  
 D-.161-.164 DIA. (10 REQ.)



OPPOSITE SIDE SAME

UNLESS OTHERWISE SPECIFIED:  
 1. USE MATERIAL THICKNESS FOR MAXIMUM RADIUS ON ALL BENDS  
 2. ALL ANGULAR BENDS 90 DEGREES  
 3. REMOVE ALL BURRS AND SHARP EDGES  
 4. MOUNT INSERTS AFTER FINISHING

NOTES

TFP-2.5K		ASS'Y. NO.
QTY./UNIT	MODEL USED ON	
SCALE 1:1	CODE A	S401-451 S401- S401-

REF: LD 1499

REQ'D.	ITEM	PART NUMBER	DESCRIPTION	SYMBOL
10	2	NT129-440-4	NUT, PLAIN, SPLINE	D
6	1	NT129-832-4	NUT, PLAIN, SPLINE	B

F. BUDETTI		LIST OF MATERIAL	
MATERIAL .064 THICK ALUMINUM 5052-H32		THE TECHNICAL MATERIEL CORP. MAMARONECK, NEW YORK	
FINISH S404 YEL. IRIDITE		TITLE BOX, FILTER	
DRAWN	DATE 8-31-66	FINAL APPROVAL	DATE 5/22/69
CHECKED	DATE 9/15/66		
ELECT. DES.	DATE	M55066	
MECH. DES.	DATE 5-22-69	SHEET	REV. LTR.

THE CONTENTS OF THIS DRAWING ARE THE EXCLUSIVE PROPERTY OF THE TECHNICAL MATERIEL CORP. ITS UNAUTHORIZED USE OR REPRODUCTION IN WHOLE OR IN PART IS STRICTLY FORBIDDEN.

UNLESS OTHERWISE SPECIFIED DIMENSIONS ARE IN INCHES AND INCLUDE CHEMICALLY APPLIED OR PLATED FINISHES

DECIMALS .X ± .05 .XX ± .01 .XXX ± .005 FRACTIONS ± 1/64 ANGLES ± 0° 30'

TOLERANCES

M55066