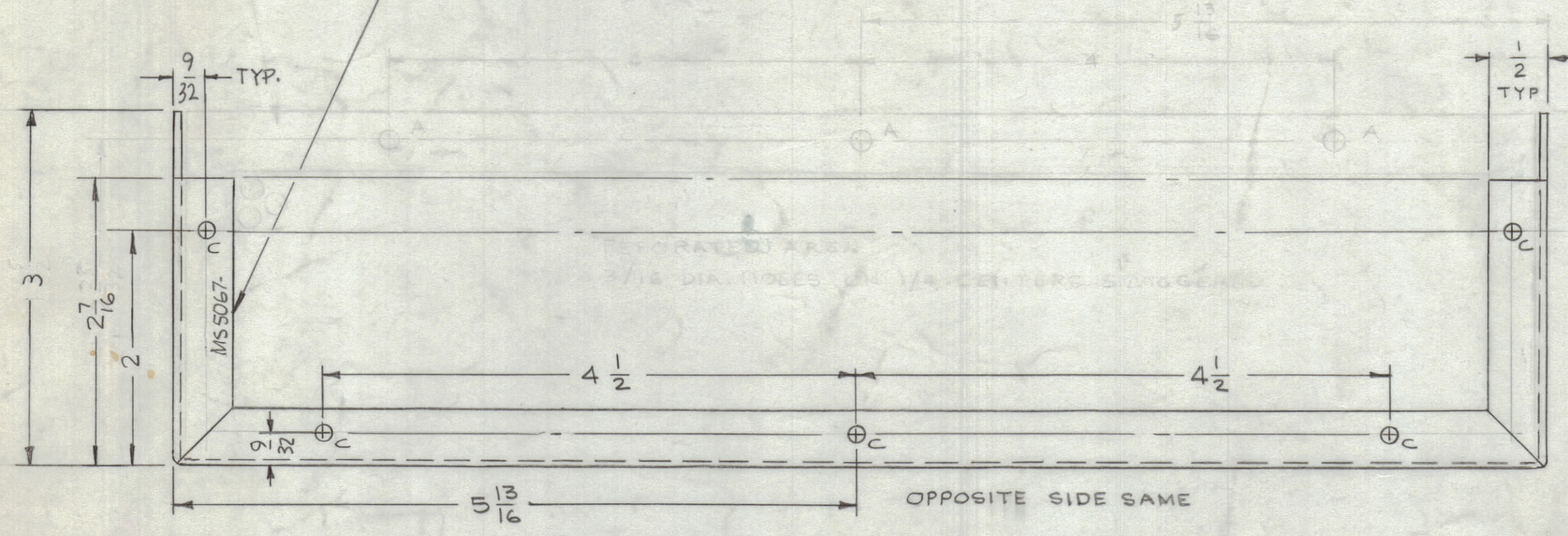
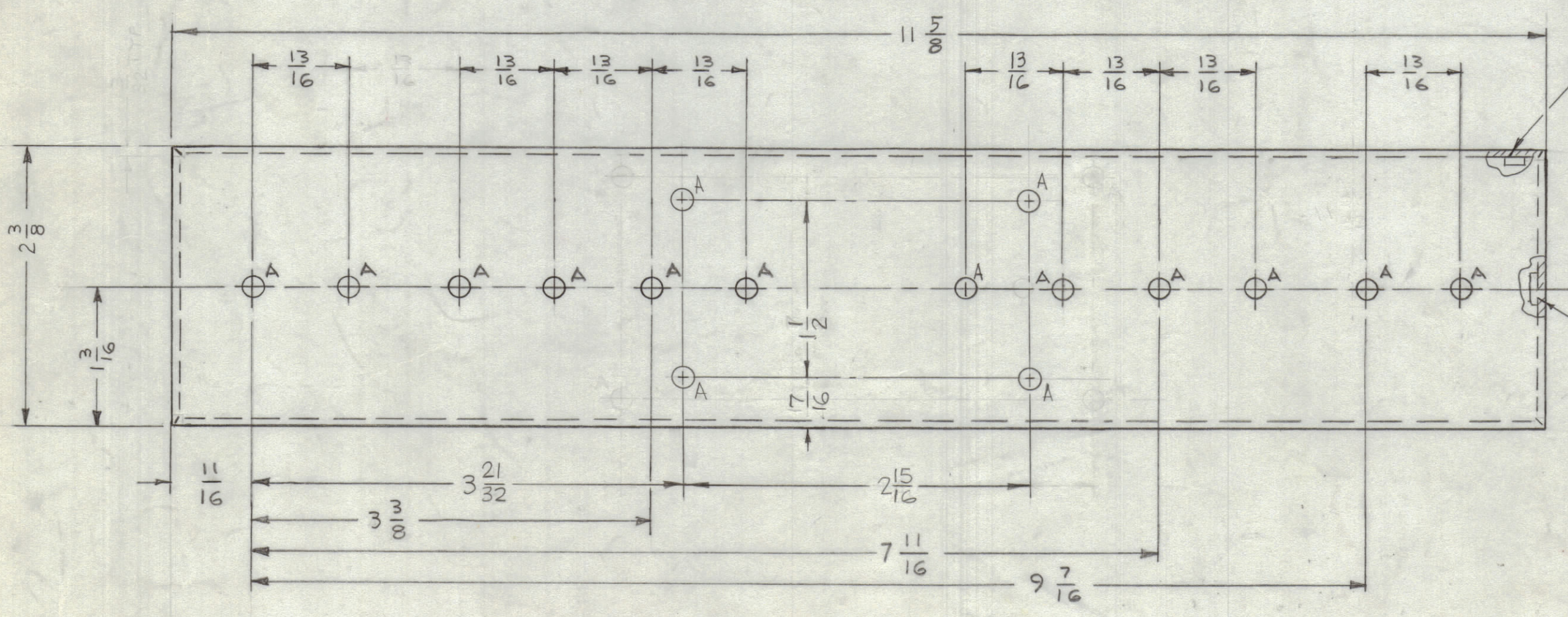


REVISIONS						
ZONE	SYM	DESCRIPTION	DATE	E.M.N. NO.	DRAFT	CHKD
	X	EXP. RELEASE	8-31-66	X	JBC	
	X1	1A HOLE ADDED	9-15-66	X1	JBC	
	X2	4 A HOLES RELOCATED	10-6-66	X2	JBC	
	X3	COMPLETELY REVISED	9-12-67	X3	JBC	
	Ø	ORIGINAL RELEASE FOR PRODUCTION	5/22/69		CW	

MARK TMC P/N 1/8 HIGH GOTHIC  
W/LATEST REV LETTER MS5067

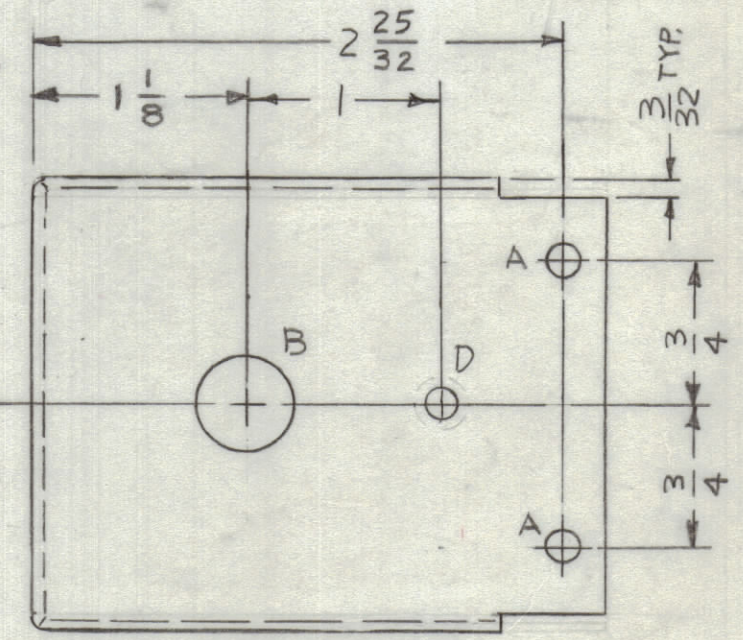


HOLE	DESCRIPTION	REQ
A	11/64 DIA	26
B	1/2 DIA	2
C	.161-.164 DIA.	10
D	.221-.224 DIA.	2



1 MOUNT IN ALL 'C' HOLES

2 MOUNT IN ALL 'D' HOLES



MS5067

UNLESS OTHERWISE SPECIFIED:

- USE MATERIAL THICKNESS FOR MAXIMUM RADIUS ON ALL BENDS
- ALL ANGULAR BENDS 90 DEGREES
- REMOVE ALL BURRS AND SHARP EDGES
- MOUNT INSERTS AFTER FINISHING

REF: LD1503

REQ'D.	ITEM	PART NUMBER	DESCRIPTION	SYMBOL
2	2	NT129-832-4	NUT, PLAIN, SPLINE	D
10	1	NT129-440-4	NUT, PLAIN, SPLINE	C

F. BUDETTI LIST OF MATERIAL

MATERIAL: .064 THK. ALUMINUM 5052-H32

FINISH: S404 YEL. IRIDITE

THE TECHNICAL MATERIEL CORP. MAMARONECK, NEW YORK

TITLE: BOX, FILTER

DRAWN: JBC DATE: 8-31-66

CHECKED: [Signature] DATE: 9/15/66

ELECT. DES. DATE: [Blank]

MECH. DES. DATE: 5-22-69

FINAL APPROVAL: [Signature] DATE: 5/22/69

REVISIONS: MS5067

REPROL NO. 4401 21539

QTY./UNIT	MODEL USED ON	ASS'Y. NO.
1	TFP-2.5K	

SCALE: 1:1

CODE: A

S401-451  
S401-  
S401-

THE CONTENTS OF THIS DRAWING ARE THE EXCLUSIVE PROPERTY OF THE TECHNICAL MATERIEL CORP. ITS UNAUTHORIZED USE OR REPRODUCTION IN WHOLE OR IN PART IS STRICTLY FORBIDDEN.

NOTES