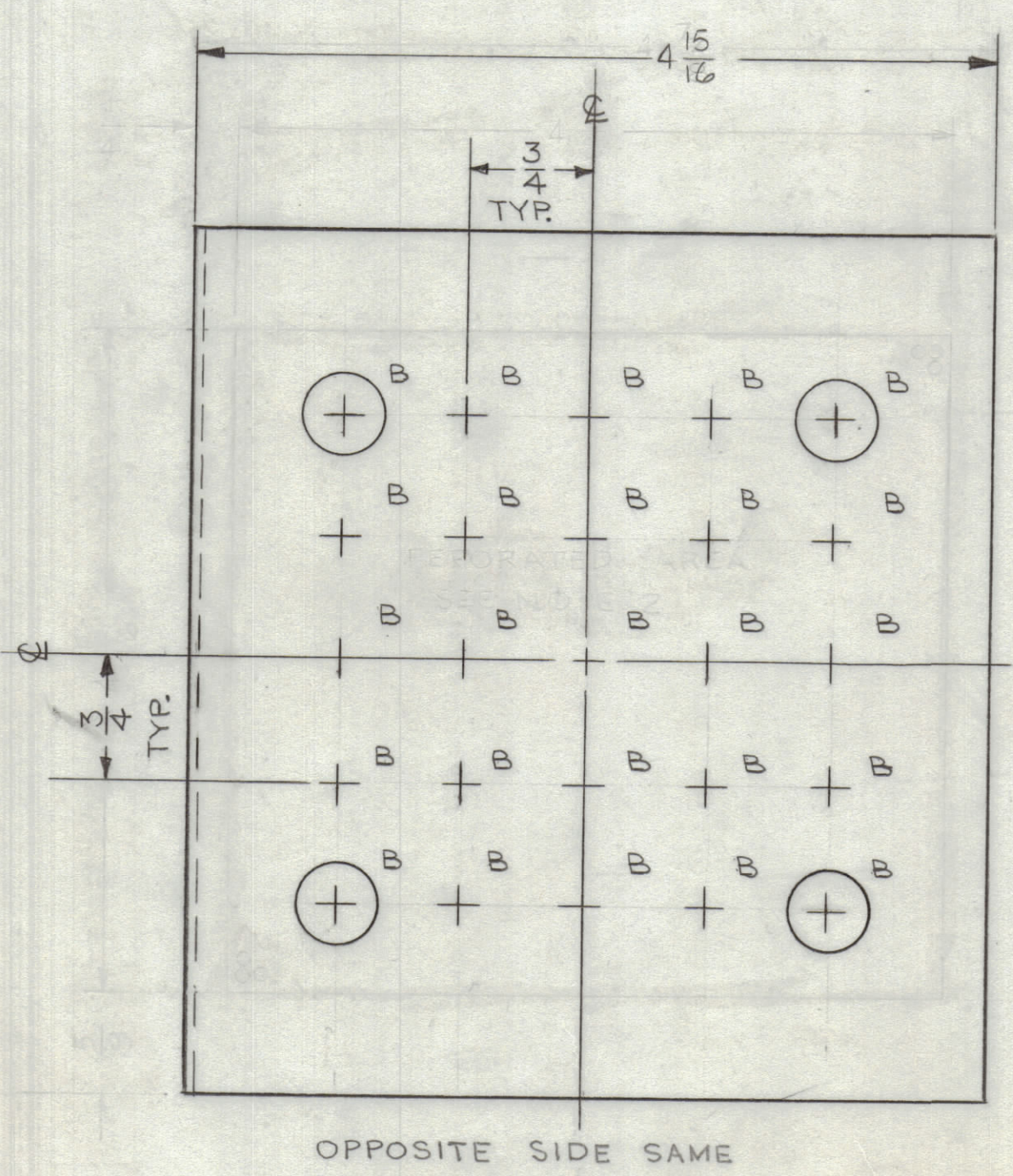
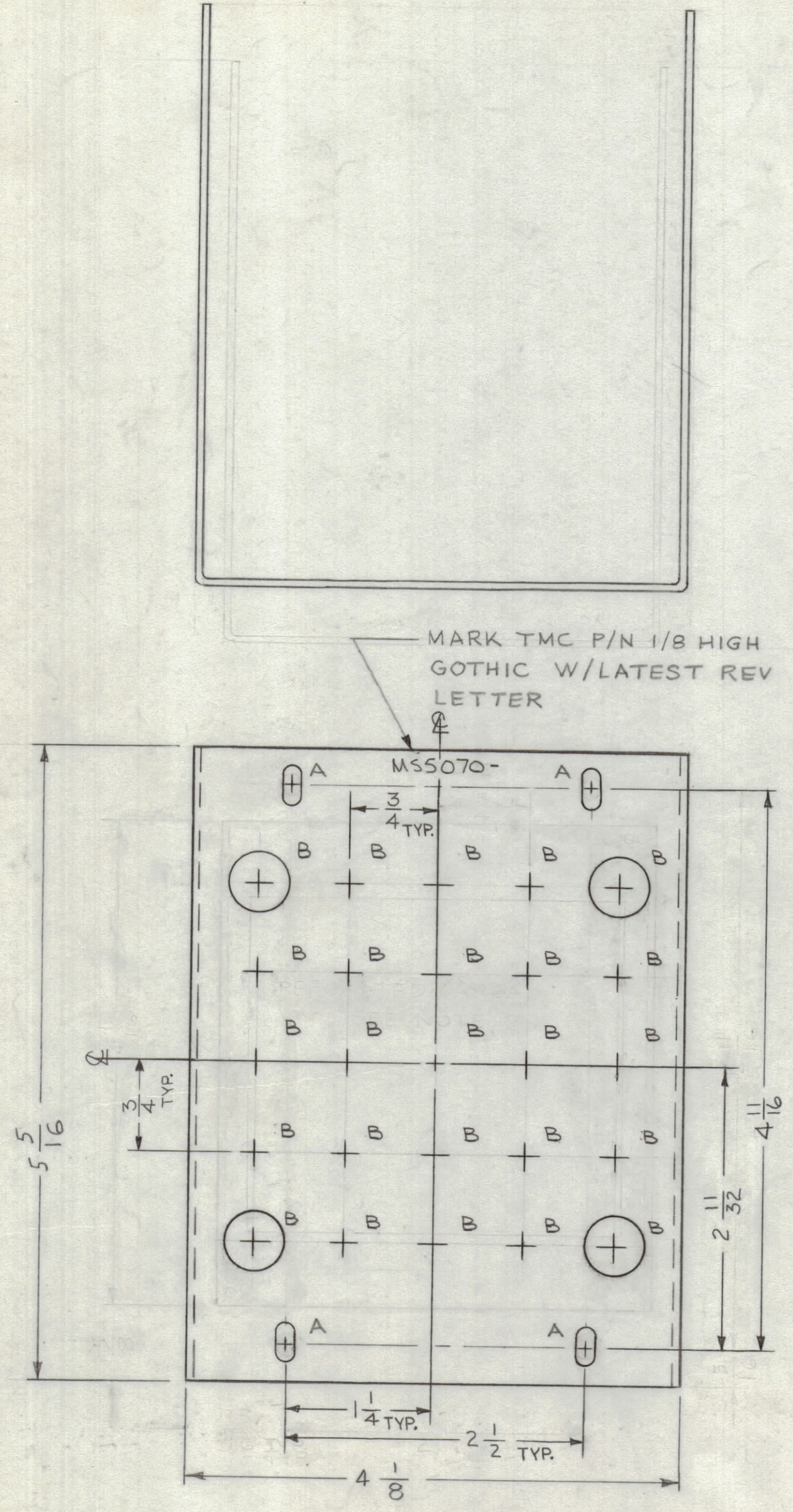


REVISIONS							
ZONE	SYM	DESCRIPTION	DATE	E.M.N. NO.	DRAFT	CHKD	APPD
	X	EXP. RELEASE	9-8-66	X	JBC		
	X ₁	DELE. PERFORATED AREA & ADDED "B" HOLES. "A" WAS 1/64 D. DELE NOTES. A ₁ WAS 1/8	2-6-67	X ₁	RME	JBC	LB
	Ø	ORIGINAL RELEASE FOR PRODUCTION	2-16-67		L.A.K.		

HOLE	DESCRIPTION	REQ.
A	1/64 X 1/32 SLOT	4
B	1/2 DIA	75



UNLESS OTHERWISE SPECIFIED:

1. USE MATERIAL THICKNESS FOR MAXIMUM RADIUS ON ALL BENDS
2. ALL ANGULAR BENDS 90 DEGREES
3. REMOVE ALL BURRS AND SHARP EDGES

UNLESS OTHERWISE SPECIFIED:

1. USE MATERIAL THICKNESS FOR MAXIMUM RADIUS ON ALL BENDS
2. ALL ANGULAR BENDS 90 DEGREES
3. REMOVE ALL BURRS AND SHARP EDGES

NOTES

Q'TY./UNIT	MODEL USED ON	ASS'Y. NO.
1	PSP350-C	
SCALE	CODE	
1:1	A	

THE CONTENTS OF THIS DRAWING ARE THE EXCLUSIVE PROPERTY OF THE TECHNICAL MATERIEL CORP. ITS UNAUTHORIZED USE OR REPRODUCTION IN WHOLE OR IN PART IS STRICTLY FORBIDDEN.

REQ'D.	ITEM	PART NUMBER	DESCRIPTION	SYMBOL
	L. BUTLER		LIST OF MATERIAL	
MATERIAL		THE TECHNICAL MATERIEL CORP. MAMARONECK, NEW YORK		
FINISH		COVER, RESISTOR		
.051 THK. ALUMINUM 5052-H32		S404 YEL. IRIDITE		
UNLESS OTHERWISE SPECIFIED DIMENSIONS ARE IN INCHES AND INCLUDE CHEMICALLY APPLIED OR PLATED FINISHES		DRAWN	DATE	FINAL APPROVAL
		JBC	9-8-66	JBC
		CHECKED	DATE	DATE
		JBC		2/16/67
DECIMALS		ELECT. DES.		DATE
.X ± .05		DATE		DATE
.XX ± .01		MECH. DES.		DATE
.XXX ± .005		DATE		DATE
TOLERANCES		FRACTIONS		DATE
± 1/64		± 1/64		DATE
± 0° 30'		± 0° 30'		DATE
		SHEET		REV. LTR.
		MS5070		Ø

MS 5070