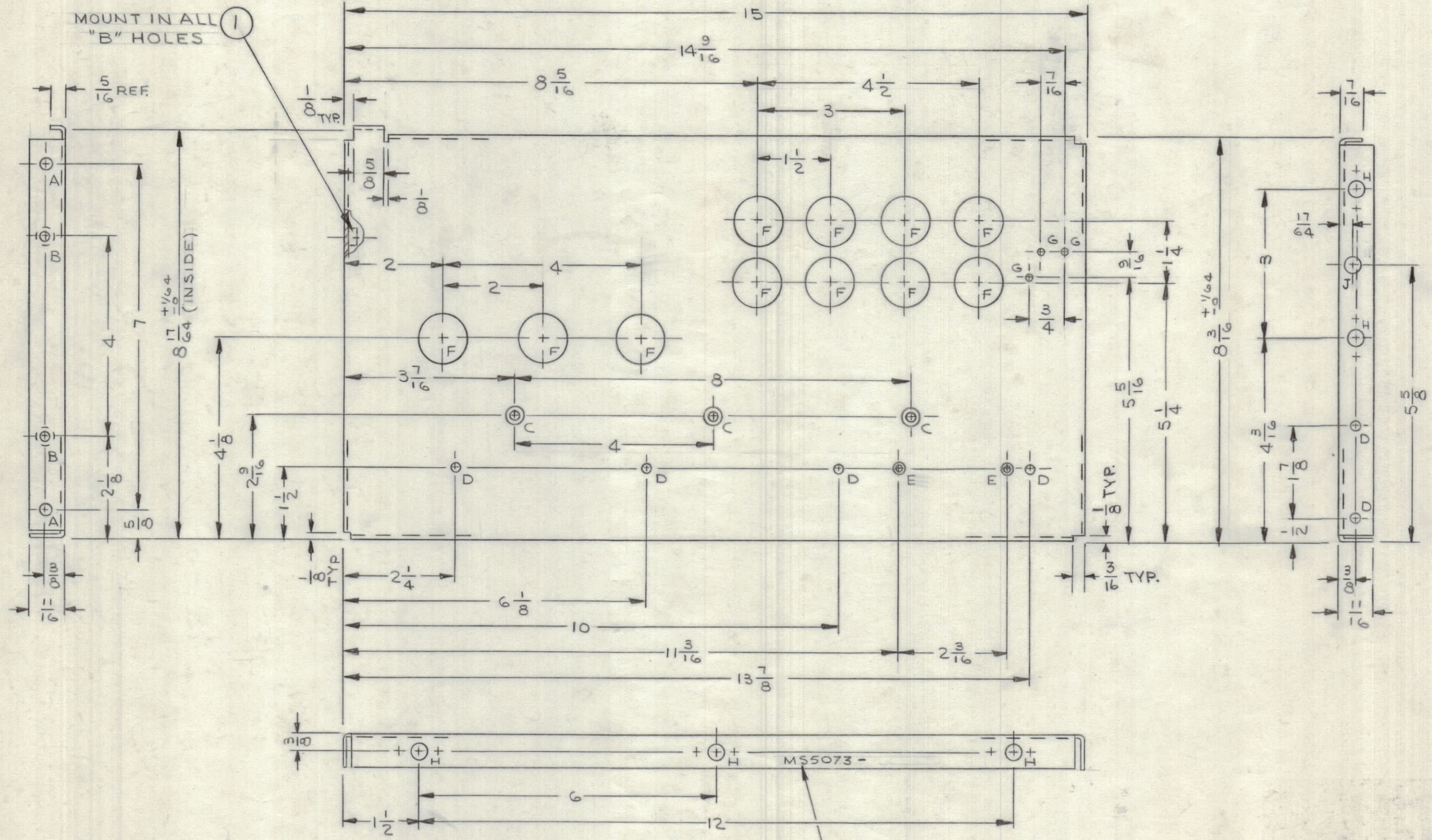
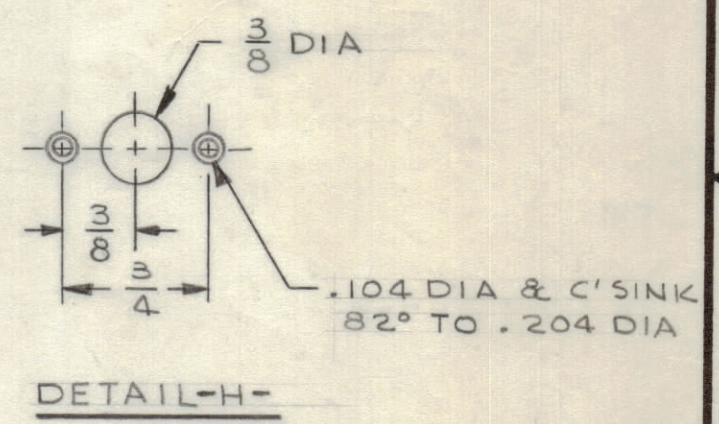


| REVISIONS | | | | | | |
|----------------|------|---------------------------------|---------|----------------|--------|--------------------|
| SYM | ZONE | DESCRIPTION | DATE | E.M.N.NO | DRAFT | CHKD APPD |
| X | | EXP. RELEASE | 10/3/66 | | JL | |
| X ₁ | | ADDED 3/16 & 1/8 TYP. DIMS | 2-6-67 | X ₁ | RME | <i>[Signature]</i> |
| Ø | | ORIGINAL RELEASE FOR PRODUCTION | 2-16-67 | | L.A.K. | |



| HOLE LEGEND | | |
|-------------|-----------------------------------|------|
| HOLE | DESCRIPTION | REQ. |
| A | 15/64 DIA | 2 |
| B | .250-.253 DIA | 2 |
| C | .196 DIA & C'SINK 82° TO .390 DIA | 3 |
| D | 13/64 DIA | 6 |
| E | .144 DIA & C'SINK 82° TO .284 DIA | 2 |
| F | 1" DIA | 11 |
| G | 1/8 DIA | 3 |
| H | SEE DETAIL | 6 |
| J | 3/8 DIA | 1 |



UNLESS OTHERWISE SPECIFIED:

1. USE MATERIAL THICKNESS FOR MAXIMUM RADIUS ON ALL BENDS
2. ALL ANGULAR BENDS 90 DEGREES
3. REMOVE ALL BURRS AND SHARP EDGES
4. MOUNT INSERTS AFTER FINISHING

MAXIMUM ALLOWABLE TOLERANCES HAVE BEEN DETERMINED AND ANY DEVIATIONS WILL BE CAUSE FOR REJECTION.

METAL MARK, 1/8 HIGH GOTHIC TMC PT. NO., W/LATEST REV. LETTER

REF LD2221

UNLESS OTHERWISE SPECIFIED DIMENSIONS ARE IN INCHES
 TOLERANCES ON FRACTIONS DECIMALS ANGLES
 $\pm 1/64$ $\pm .005$ $\pm 1/2^\circ$

MATERIAL
 .081 THK ALUMINUM
 5052-H32

FINISH
 YELLOW IRIDITE
 PER S404

| QTY REQ | ITEM | PART NO. | DESCRIPTION | SYMBOL | |
|----------------------------|------|--------------|--|----------|----------|
| 2 | 1 | NT129-1032-4 | NUT, PLAIN, SPLINE | B | |
| L. BUTLER BILL OF MATERIAL | | | | | |
| FINAL APPROVAL | | DATE | THE TECHNICAL MATERIEL CORP. MAMARONECK, NEW YORK | | |
| MECH. DES. | | DATE | | | |
| ELECT. DES. | | DATE | | | |
| CHECKED | | DATE | | | |
| DRAWN | | DATE | PLATE, SIDE - RIGHT (PSP-350C) | | |
| APPROVED FOR BUSHIPS | | DATE | | | |
| CONTRACT NO. | | CODE | SIZE | DWG. NO. | ISSUE |
| | | 82679 | C | MS5073 | Ø |
| | | SCALE 1/2 | | | SHEET OF |

[Handwritten initials]