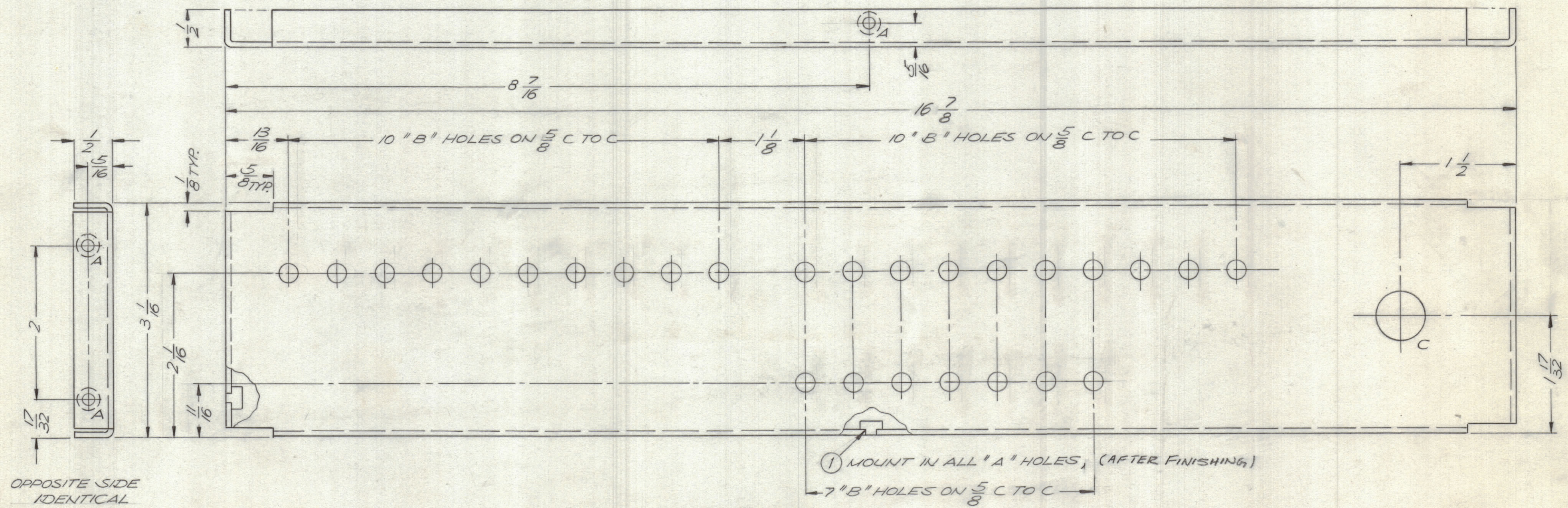


REVISIONS						
ZONE	LTR	DESCRIPTION	DATE	E.M.N.NO	DRAFT	CHKD APPD
	X	EXP. RELEASE	1/2/69		KT	
	Ø	ORIGINAL RELEASE FOR PRODUCTION	1/9/69		R.G.	JHC

OPPOSITE SIDE IDENTICAL



OPPOSITE SIDE IDENTICAL

- A - .191-.194 DIA. 6 REQ.
- B - 1/4 DIA. 27 REQ.
- C - 5/8 DIA. 1 REQ.

REF.: LD 2164

QTY. REQ.	ITEM	PART NO.	DESCRIPTION	SYMBOL
6	1	NT129-632-4	NUT PLAIN SPLINE	

LIST OF MATERIAL

UNLESS OTHERWISE SPECIFIED DIMENSIONS ARE IN INCHES AND INCLUDE CHEMICALLY APPLIED OR PLATED FINISHES	FINAL APPROVAL	DATE
TOLERANCES ON	MECH. DES.	DATE
DECIMALS	ELECT. DES.	DATE
.X ± .05	CHECKED	DATE
.XX ± .01	DRAWN	DATE
.XXX ± .005		

THE TECHNICAL MATERIEL CORP.
MAMARONECK, NEW YORK

SUB - CHASSIS

2	APP - 4 A	
QTY / UNIT	MODEL USED ON	ASS'Y NO.
APPLICATION		
	CODE	

MATERIAL	SIZE	CODE IDENT.NO.	DWG NO.	ISSUE
.063 ALUM. 5052 - H32	C	82679	MS 5084	Ø
FINISH	SCALE	SHEET		OF
S 404 YELLOW IRIDITE	1:1			

NOTICE TO PERSONS RECEIVING THIS DRAWING
THE TECHNICAL MATERIEL CORPORATION claims proprietary right in the material disclosed hereon. This drawing is issued in confidence for engineering information only and may not be reproduced or used to manufacture anything shown hereon without permission from THE TECHNICAL MATERIEL CORPORATION to the user. This drawing is loaned for mutual assistance and is subject to recall at any time.