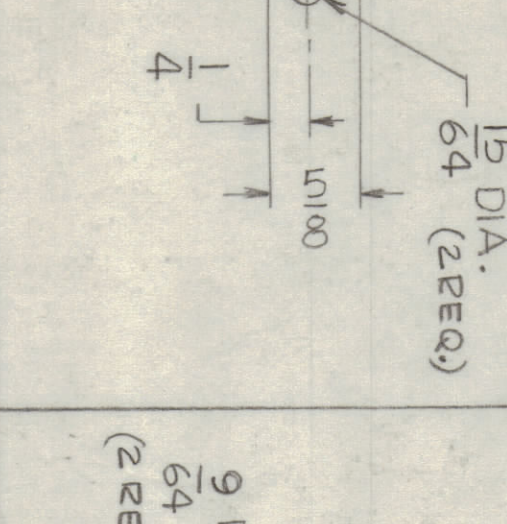
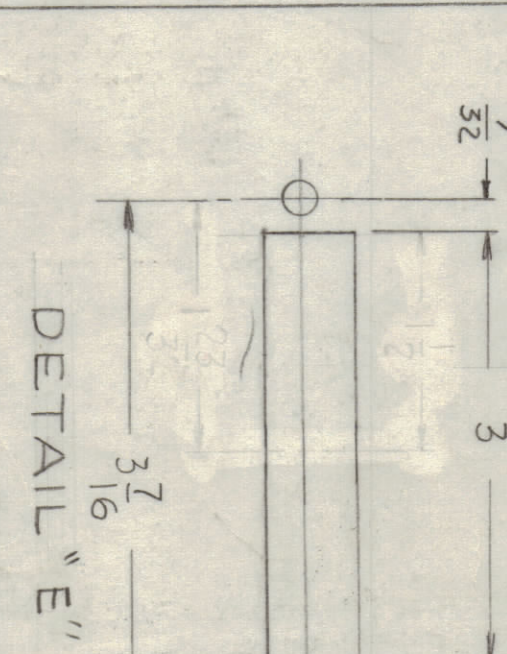
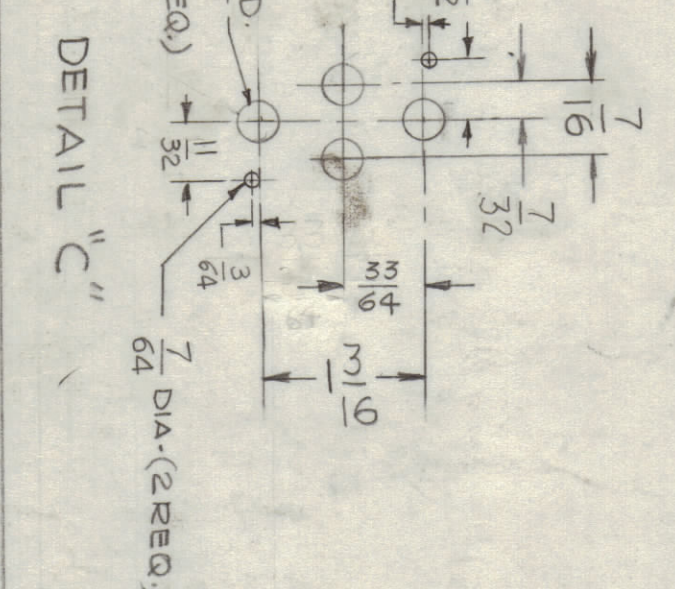
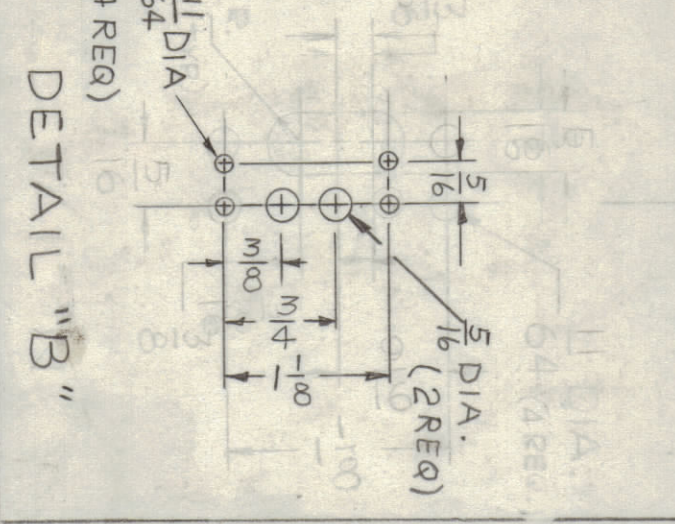
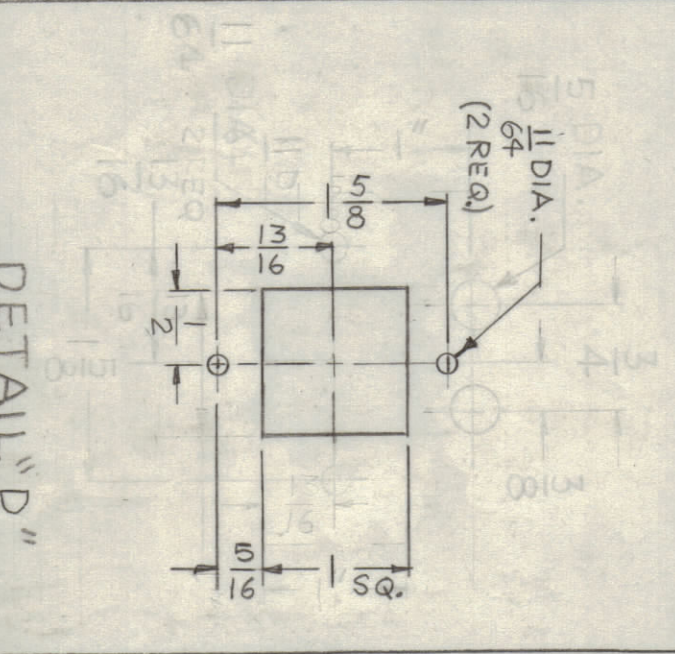
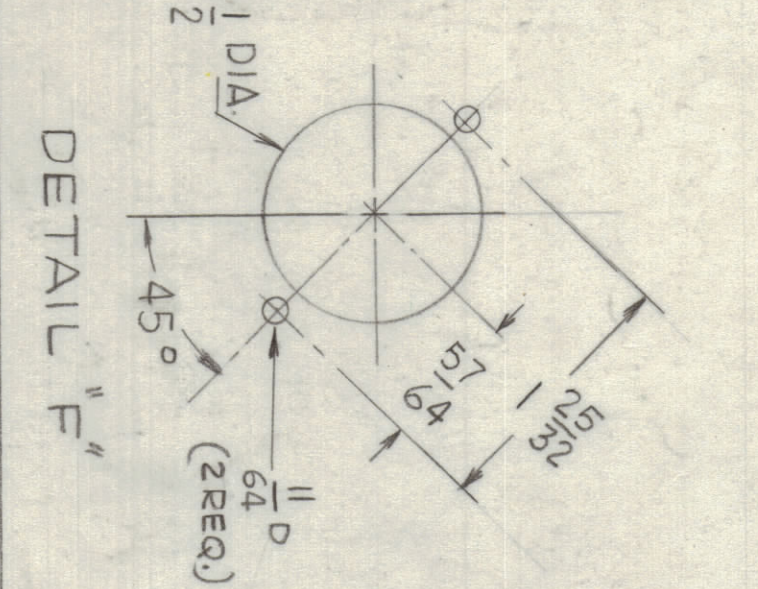
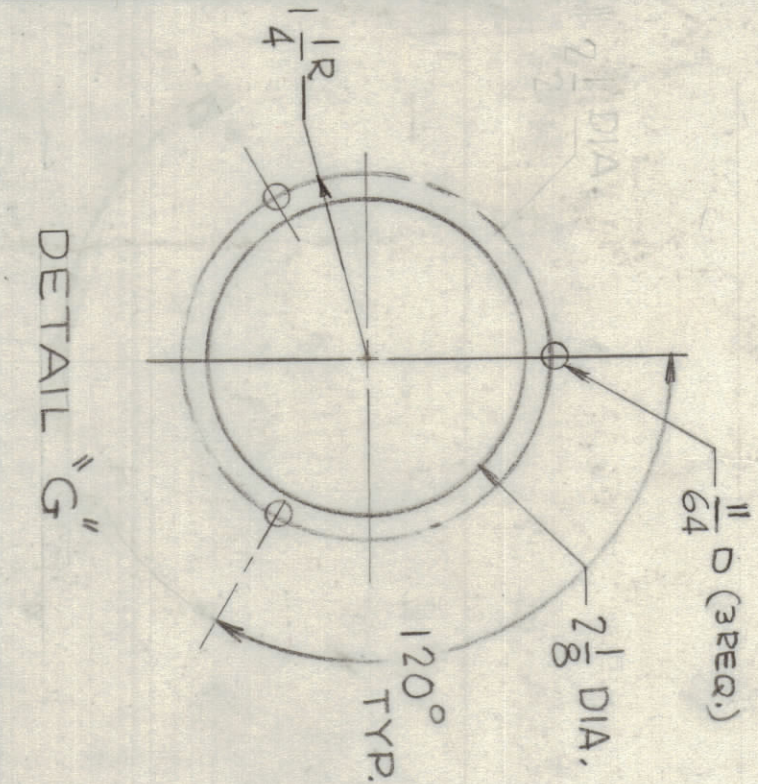
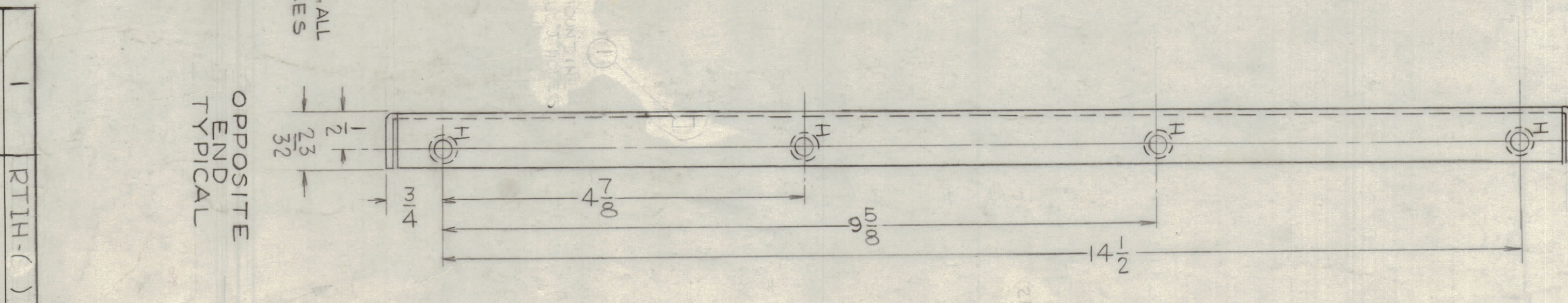
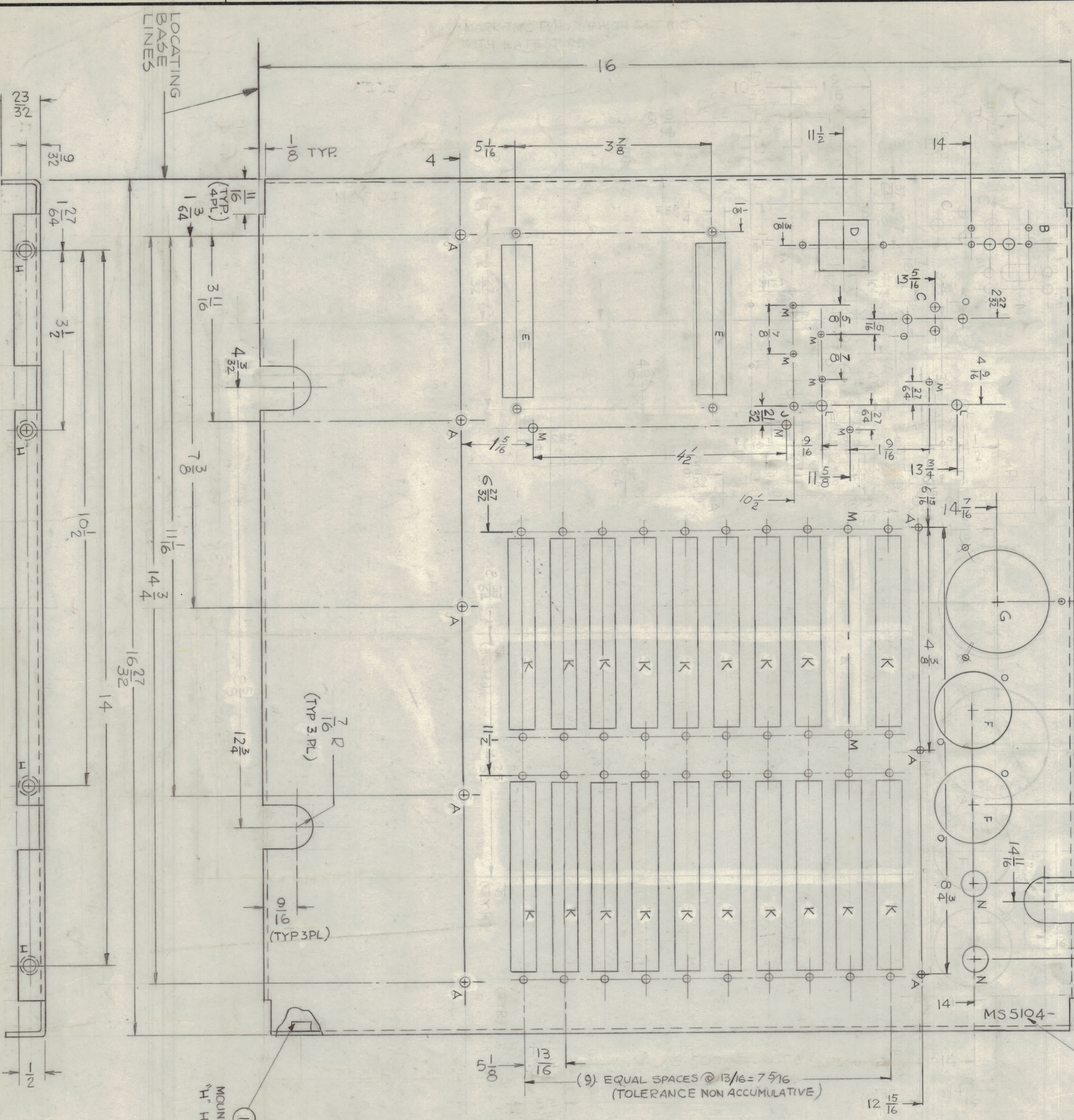


ZONE	LTR	DESCRIPTION	DATE	E.M.N.	DRAFT	CHKD	APPD
	X	EXP. RELEASE	3-9-67				
	XI	COMPLETELY REVISED	10-2-67				
	Ø	ORIGINAL RELEASE FOR PRODUCTION	4-6-68				
C-7	A	ADDED 2" M-HOLES	1/24/67				
	B	REF LD2354 ADDED	3-28-68				

MAKE TMC P/NO. 1/8 HIGH GOTHIC WITH LATEST REVISION LETTER



HOLE	DESCRIPTION	REQ
A	11/64 DIA.	5
B	SEE DETAIL	1
C	SEE DETAIL	1
D	SEE DETAIL	1
E	SEE DETAIL	2
F	SEE DETAIL	2
G	SEE DETAIL	1
H	.221 - .224 DIA.	4
J	15/64 DIA. DIA.	1
K	SEE DETAIL	19
L	5/16 DIA.	2
M	9/64 DIA.	10
N	1/2 DIA.	2

QTY	ITEM	PART NO.	DESCRIPTION	SYMBOL
1	NT 129-832-4		NUT, PLN SPLINE	H

LIST OF MATERIAL

THE TECHNICAL MATERIEL CORP.
MAMARONECK, NEW YORK

CHASSIS, MAIN

SCALE 3/4" = 1"

SIZE (CODE IDENT) NO. DWG. NO. MS 5104

ISSUE B

- 1. USE MATERIAL THICKNESS FOR MAXIMUM
- 2. ALL ANGULAR BENDS 90 DEGREES
- 3. REMOVE ALL BURRS AND SHARP EDGES
- 4. MOUNT INSERTS AFTER FINISHING

QTY / UNIT	MODEL USED ON	ASSY NO.
1	RT1H-()	

APPLICATION CODE S401-451

TOLERANCES ON	FRACTIONS	DECIMALS	ANGLES
UNLESS OTHERWISE SPECIFIED DIMENSIONS ARE IN INCHES AND INCLUDE CHEMICALLY APPLIED OR PLATED FINISHES	± 1/64	± .005	± 0°-30'

DATE	DATE	DATE
3-9-67	10-2-67	4-6-68

DATE	DATE	DATE
3-9-67	10-2-67	4-6-68