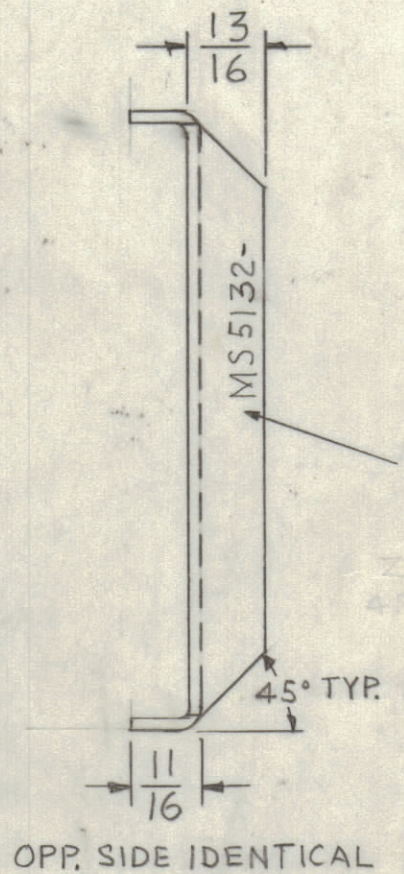
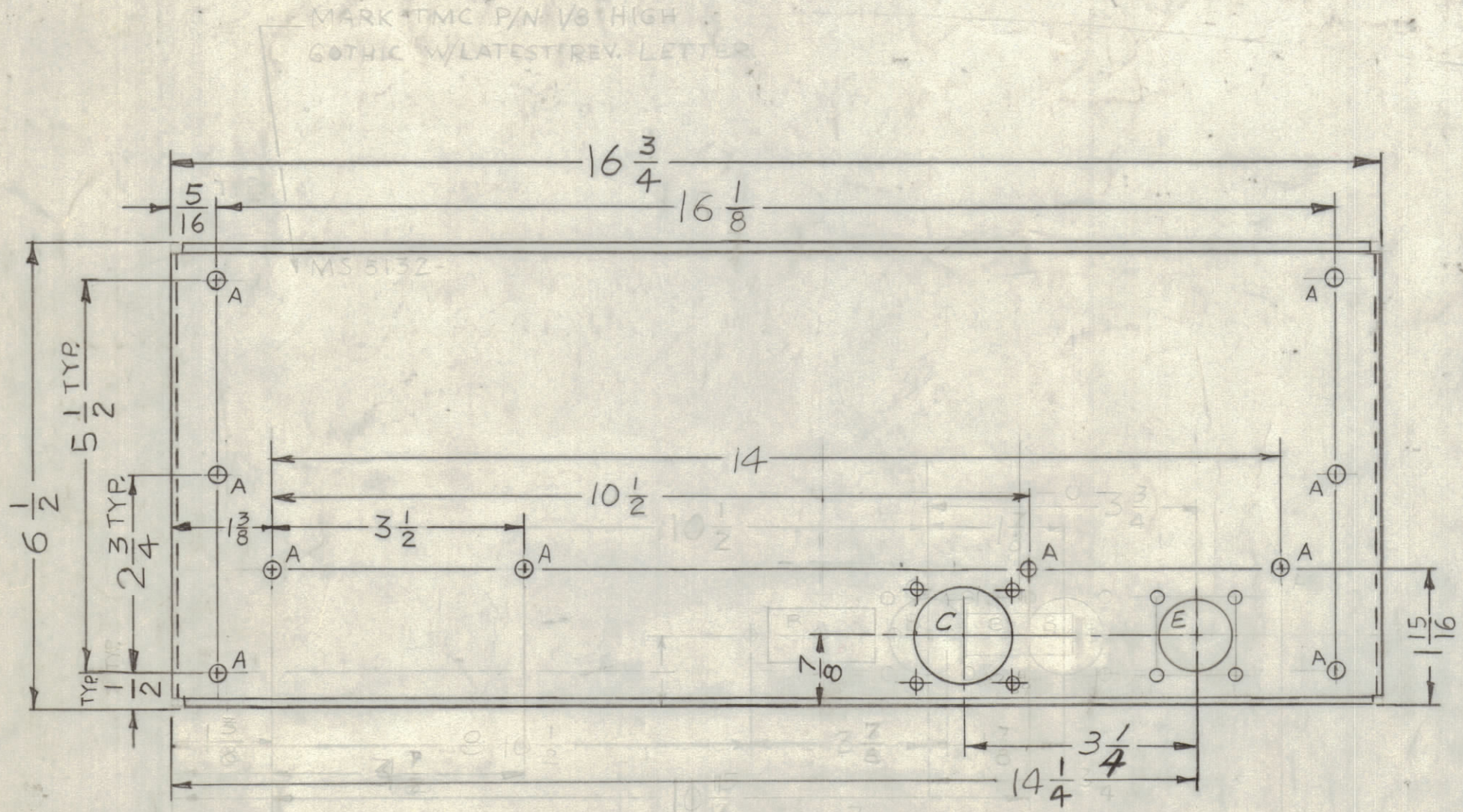
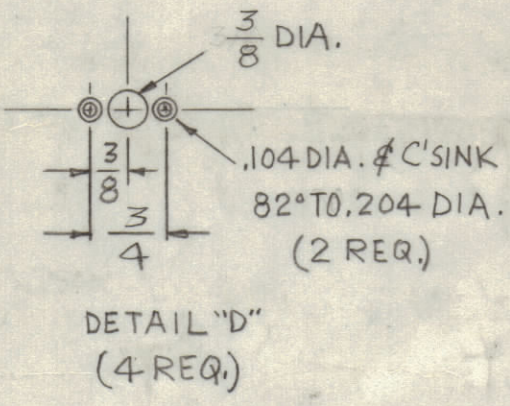
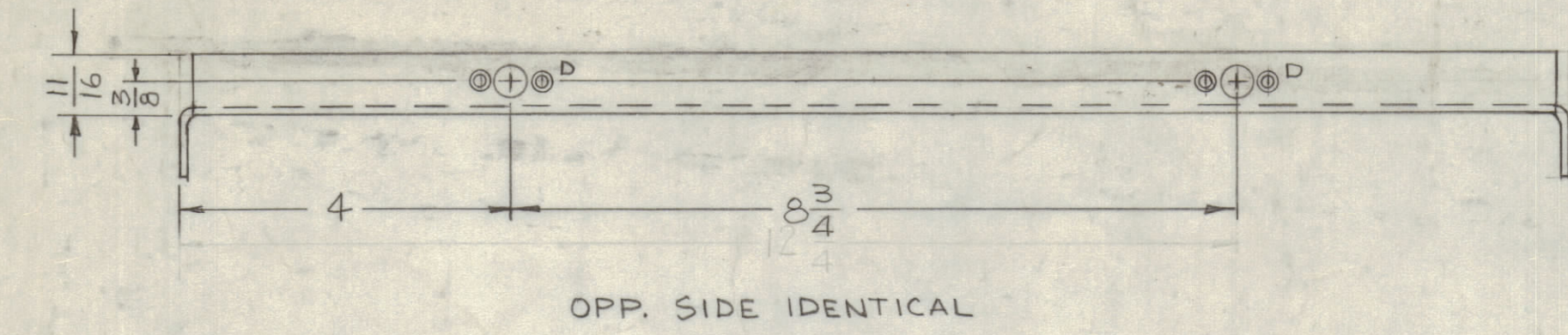


REVISIONS						
ZONE	LTR	DESCRIPTION	DATE	E.M.N.NO	DRAFT	CHKD APPD
	X	EXP. RELEASE	10-3-67		H.G.	<i>[Signature]</i>
	XI	B&C DETAILS REV.	12-13-67		H.G.	<i>[Signature]</i>
		ORIGINAL RELEASE FOR PRODUCTION	12-6-67		H.G.	
	A	CONN. MTG. COMPL. REVISED	1/17/69	19211	K.H.	<i>[Signature]</i>



HOLE	DESCRIPTION	REQ'D.
A	13/64 DIA.	10
B	DELETED	2
C	SEE DETAIL	1
D	SEE DETAIL	4
E	SEE DETAIL	1

DETAIL	W	X	Y	Z
C	37/64	1-5/32	1-5/16	9/64
E	29/64	29/32	15/16	9/64



QTY. REQ.	ITEM	PART NO.	DESCRIPTION	SYMBOL
	F. EATON		LIST OF MATERIAL SK3253-001-6	

UNLESS OTHERWISE SPECIFIED DIMENSIONS ARE IN INCHES AND INCLUDE CHEMICALLY APPLIED OR PLATED FINISHES		FINAL APPROVAL <i>[Signature]</i>	DATE 12/4/68
TOLERANCES ON		MECH. DES.	DATE
DECIMALS	FRACTIONS	ELECT. DES.	DATE
.X ± .05	± 1/64	CHECKED <i>[Signature]</i>	DATE 12/13/67
.XX ± .01	ANGLES	DRAWN H.G.	DATE 10-3-67
.XXX ± .005	± 0° -30'		
MATERIAL .081 THK ALUM. 5052-H32		M/L <i>[Signature]</i>	DATE 10/6/67
FINISH S404 YEL IRIDITE			

THE TECHNICAL MATERIEL CORP. MAMARONECK, NEW YORK			
PLATE, REAR			
SIZE	CODE IDENT. NO.	DWG NO.	ISSUE
C	82679	MS 5132	A
SCALE 1:2			SHEET OF

UNLESS OTHERWISE SPECIFIED:

- USE MATERIAL THICKNESS FOR MAXIMUM RADIUS ON ALL BENDS
- ALL ANGULAR BENDS 90 DEGREES
- REMOVE ALL BURRS AND SHARP EDGES

1	RTPH-3	
QTY / UNIT	MODEL USED ON	ASS'Y NO.
	APPLICATION	
	CODE A	S401-451
NOTICE TO PERSONS RECEIVING THIS DRAWING THE TECHNICAL MATERIEL CORPORATION claims proprietary right in the material disclosed hereon. This drawing is issued in confidence for engineering information only and may not be reproduced or used to manufacture anything shown hereon without permission from THE TECHNICAL MATERIEL CORPORATION to the user. This drawing is loaned for mutual assistance and is subject to recall at any time.		