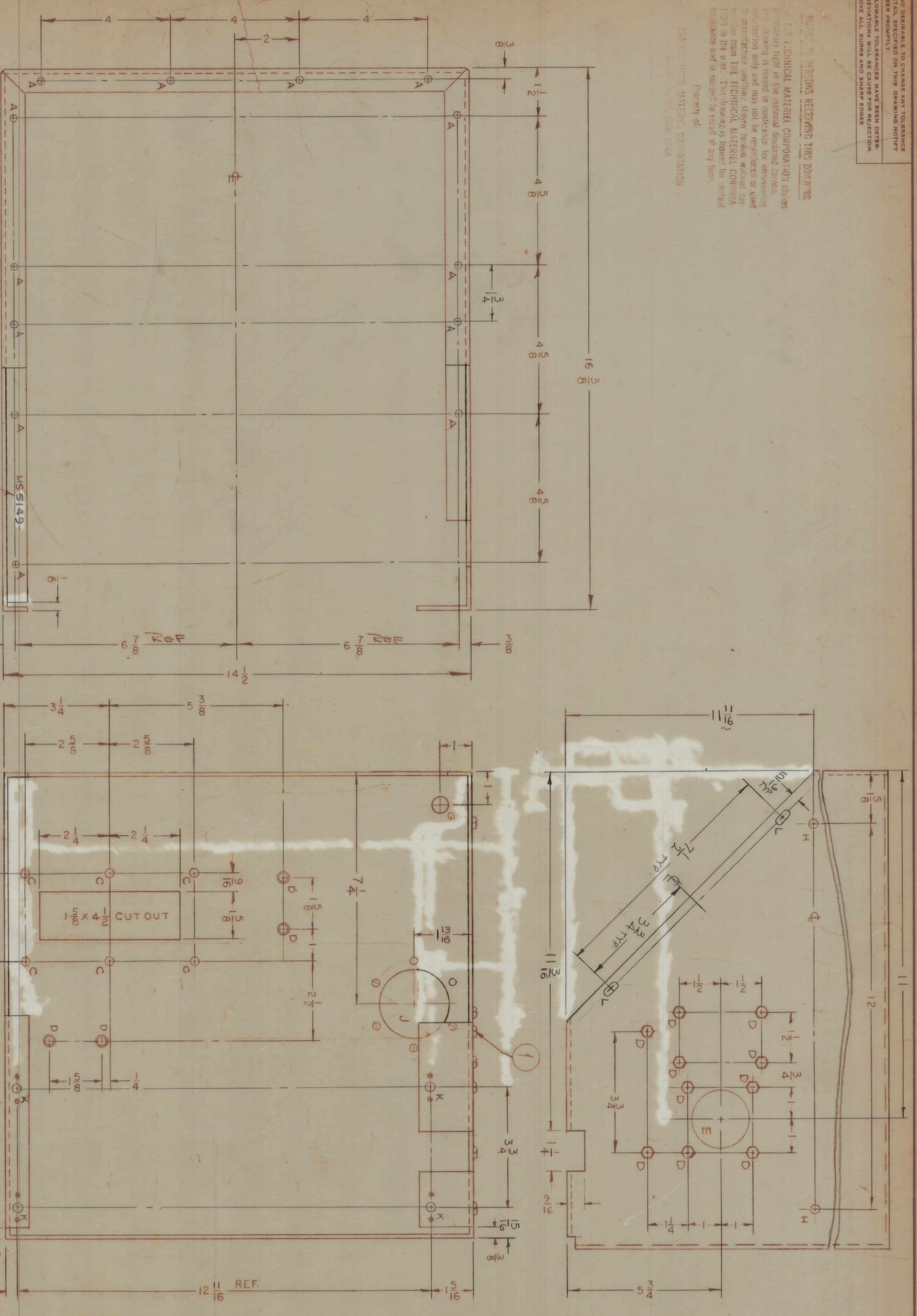


IT IS THE BUYER'S RESPONSIBILITY TO OBTAIN AND CHECK THE TECHNICAL MATERIAL SPECIFICATIONS AND TO NOTIFY THE PURCHASER PROMPTLY IN THE EVENT OF ANY DISCREPANCY. MAXIMUM ALLOWABLE TOLERANCES HAVE BEEN DETERMINED AND DEVIATION WILL BE CALLED OUT THEREON. MATERIALS ARE SHOWN AND SHOWN AS SHOWN.

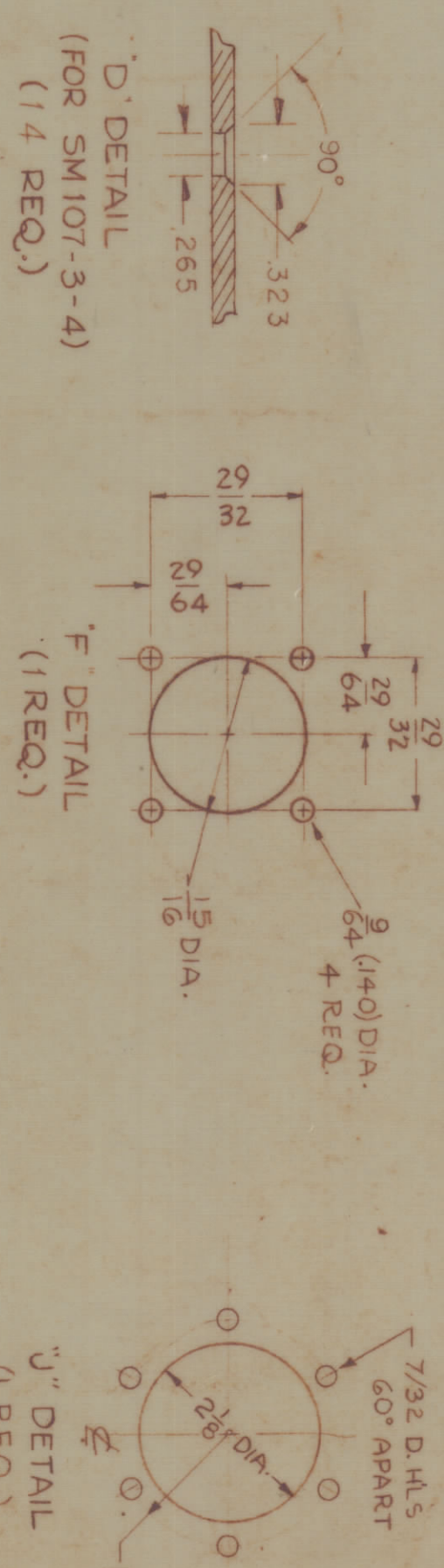
PROPERTY OF THE TECHNICAL MATERIAL CORPORATION
 PROPERTY RIGHT IN THE GENERAL DESIGN HEREIN IS RESERVED. THIS DRAWING IS ISSUED IN CONFIDENCE FOR THE EXCLUSIVE USE OF THE BUYER AND IS NOT TO BE REPRODUCED OR USED IN ANY MANNER WITHOUT THE WRITTEN PERMISSION OF THE TECHNICAL MATERIAL CORPORATION. THE BUYER AGREES TO HOLD THE TECHNICAL MATERIAL CORPORATION HARMLESS AND TO DEFEND AND HOLD THE TECHNICAL MATERIAL CORPORATION HARMLESS FROM AND AGAINST ALL SUCH CLAIMS AND DAMAGES.

PROPERTY OF THE TECHNICAL MATERIAL CORPORATION
 PROPERTY OF THE TECHNICAL MATERIAL CORPORATION



MARK THIS PT. NO. 5 HIGH COSTING W/LATEST REV LETTER.

- HOLES -
- A ~ 13/64 (.203) DIA. 22 REQ.
 - B ~ 3/16 (.187) DIA. 5 REQ.
 - C ~ 7/32 (.218) DIA. 6 REQ.
 - E ~ 1-3/4 (1.750) DIA. 1 REQ.
 - G ~ 1/2 (.500) DIA. 1 REQ.
 - H ~ 9/32 (.281) DIA. 3 REQ.
 - L ~ 5/16 X 1/2 SLOT 4 REQ.



UNLESS OTHERWISE SPECIFIED:
 1. USE MATERIAL THICKNESS FOR MAXIMUM RADIUS ON ALL BENDS
 2. ALL ANGULAR BENDS 90 DEGREES
 3. REMOVE ALL BURRS AND SHARP EDGES
 4. MOUNT INSERTS AFTER FINISHING

1	PT-DOREL	PROJECT NO.	9-5-67	DATE	9-5-67
2		MODEL		USED ON	
3		PROJECT NO.		DATE	
4		USED ON		DATE	
5		PROJECT NO.		DATE	
6		USED ON		DATE	
7		PROJECT NO.		DATE	
8		USED ON		DATE	
9		PROJECT NO.		DATE	
10		USED ON		DATE	
11		PROJECT NO.		DATE	
12		USED ON		DATE	
13		PROJECT NO.		DATE	
14		USED ON		DATE	
15		PROJECT NO.		DATE	
16		USED ON		DATE	
17		PROJECT NO.		DATE	
18		USED ON		DATE	
19		PROJECT NO.		DATE	
20		USED ON		DATE	
21		PROJECT NO.		DATE	
22		USED ON		DATE	
23		PROJECT NO.		DATE	
24		USED ON		DATE	
25		PROJECT NO.		DATE	
26		USED ON		DATE	
27		PROJECT NO.		DATE	
28		USED ON		DATE	
29		PROJECT NO.		DATE	
30		USED ON		DATE	
31		PROJECT NO.		DATE	
32		USED ON		DATE	
33		PROJECT NO.		DATE	
34		USED ON		DATE	
35		PROJECT NO.		DATE	
36		USED ON		DATE	
37		PROJECT NO.		DATE	
38		USED ON		DATE	
39		PROJECT NO.		DATE	
40		USED ON		DATE	
41		PROJECT NO.		DATE	
42		USED ON		DATE	
43		PROJECT NO.		DATE	
44		USED ON		DATE	
45		PROJECT NO.		DATE	
46		USED ON		DATE	
47		PROJECT NO.		DATE	
48		USED ON		DATE	
49		PROJECT NO.		DATE	
50		USED ON		DATE	

1	ORIGINAL RELEASE FOR	6/26/68	GE
2	EXP. PROJECT	9/5/67	GE
3	EXP. RELEASE	9/5/67	GE
4	CHANGED FROM		
5	TOLERANCES		
6	DATE ON NO. 10/11/67		
7	CHECKER		
8	DATE		
9	SCALE		
10	DR. DIM. ± 1/64		
11	FRAC. DIM. ± 1/64		
12	OTHER		
13	ANGULAR DIM. ±		
14	DR. DIM. ± 1/64		
15	FRAC. DIM. ± 1/64		
16	OTHER		
17	ANGULAR DIM. ±		

MS5149 0