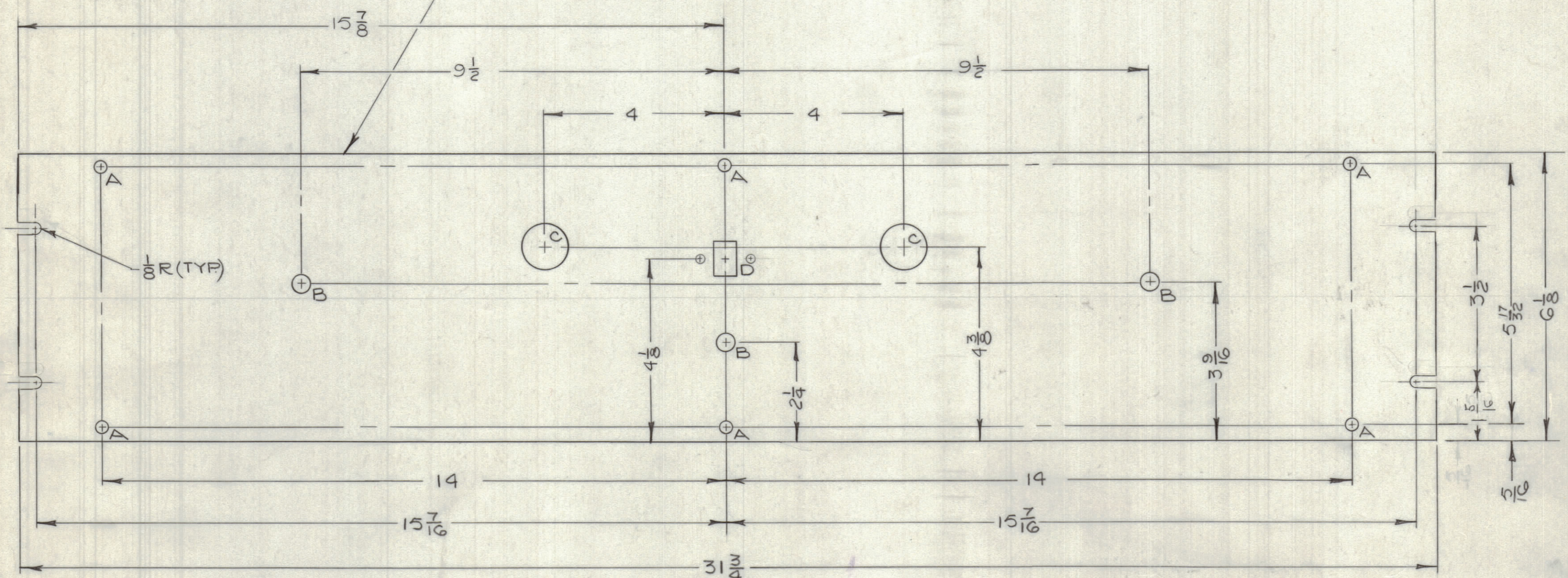
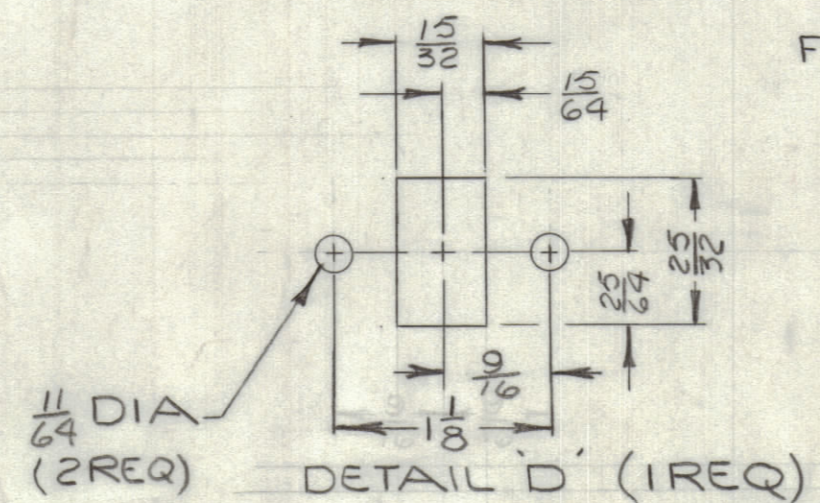


REVISIONS						
ZONE	LTR	DESCRIPTION	DATE	E.M.N.NO	DRAFT	CHKD APPD
	X	EXP RELEASE	10-19-67			
	Ø	ORIGINAL RELEASE FOR PRODUCTION	4-1-68	Ø		
	A	REPOSITIONED SLOTS	6-15-71	20377	R1	

MARK TMC PART NO. (MS 5165)
W/LATEST REV. LETTER
 $\frac{1}{8}$ HIGH GOTHIC (ON REAR OF PANEL)



HOLE	DIA	REQ
A	$\frac{13}{64}$	6
B	$\frac{31}{64}$	3
C	1	2



MACHINING:

- MILL ALL EDGES.
- HOLES MUST BE DRILLED, UNLESS OTHERWISE SPECIFIED.
- LATERAL BOW OF PANEL MUST BE KEPT TO .031 TOLERANCE.
- PANEL MUST BE FREE OF ALL MACHINING MARKS, GOUGES AND SCRATCHES. IF NECESSARY, SAND FRONT OF PANEL WITH NO. 120 GRIT SANDPAPER.

FINISH NOTES:

- S404 - IRIDITE 14-2 AL-COAT.
- S114 - ZINC CHROMATE PRIMER } FRONT AND
- S115 - SMOOTH GRAY ENAMEL } EDGES ONLY

1	BCT-10KA	
QTY / UNIT	MODEL USED ON	ASS'Y NO.
APPLICATION		
CODE	S 401-451	

NOTICE TO PERSONS RECEIVING THIS DRAWING
THE TECHNICAL MATERIEL CORPORATION claims proprietary right in the material disclosed hereon. This drawing is issued in confidence for engineering information only and may not be reproduced or used to manufacture anything shown hereon without permission from THE TECHNICAL MATERIEL CORPORATION to the user. This drawing is loaned for mutual assistance and is subject to recall at any time.

REF. LD 2247

QTY. REQ.	ITEM	PART NO.	DESCRIPTION	SYMBOL
	F. BUDETTI LIST OF MATERIALS SK 3290-MS 1002			
	FINAL APPROVAL	DATE	THE TECHNICAL MATERIEL CORP. MAMARONECK, NEW YORK	
	MECH. DES.	DATE	PANEL, FRONT (CONTROL PA.)	
	ELECT. DES.	DATE		
	CHECKED	DATE		
	DRAWN	DATE		
UNLESS OTHERWISE SPECIFIED DIMENSIONS ARE IN INCHES AND INCLUDE CHEMICALLY APPLIED OR PLATED FINISHES				
TOLERANCES ON				
DECIMALS			FRACTIONS	
.X ± .05			± 1/64	
.XX ± .01			ANGLES	
.XXX ± .005			± 0° .30'	
MATERIAL $\frac{1}{8}$ ALUM			SIZE	
2024-T3			CODE IDENT. NO. DWG. NO.	
FINISH			ISSUE	
SEE NOTE			C 82679 MS 5165 A	
SCALE 1:2			SHEET OF	

MS 5165 A B