

4

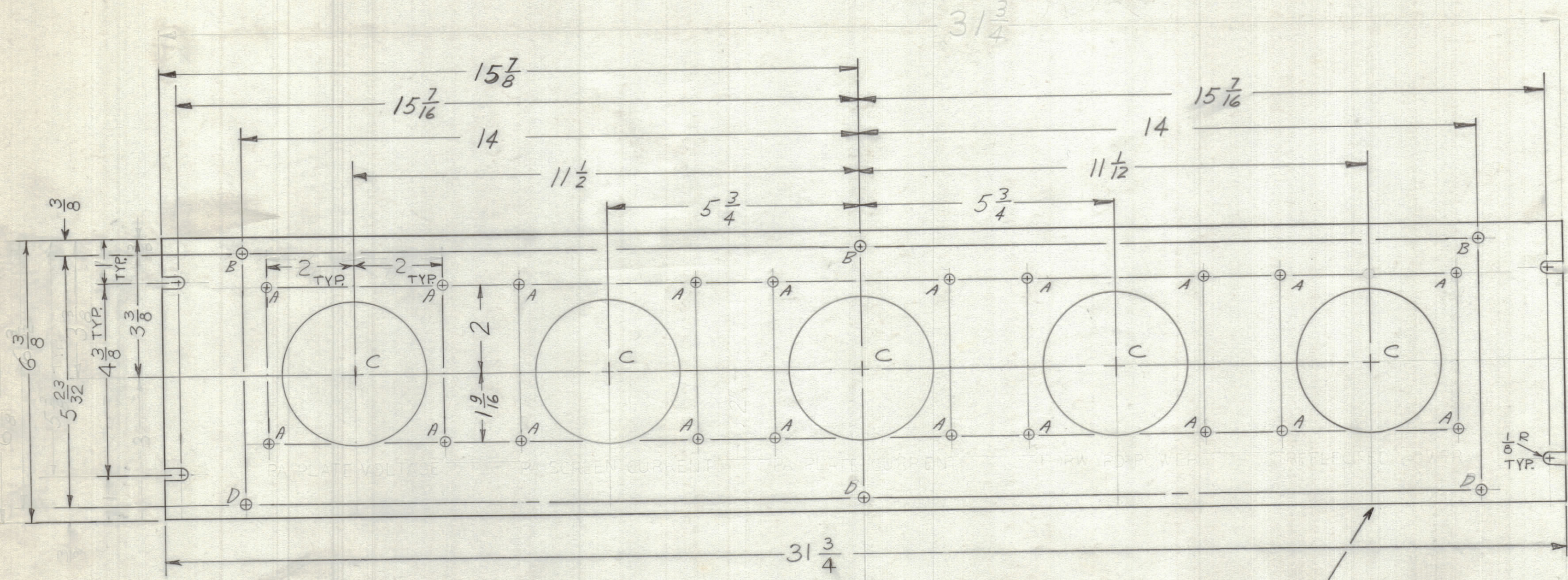
3

2

1

ENGINEERING SKETCH NOT FOR PRODUCTION

REVISIONS						
ZONE	LTR	DESCRIPTION	DATE	E.M.N.NO	DRAFT	CHKD APPD
	X	EXPERIMENTAL RELEASE	1/10/68	+	HJ	HJ
	Ø	ORIGINAL RELEASE FOR PRODUCTION	4-1-68	Ø	HJ	HJ



FRONT VIEW

MARK TMC P/N MS5167 - 1/8 HIGH GOTHIC W/LATEST REV. LETTER. (ON REAR)

HOLE	DESCRIPTION	REQ
A	3/16 DIA.	20
B	15/64 DIA.	3
C	3-1/4 DIA.	5
D	13/64 DIA.	3

MACHINING:

- MILL ALL EDGES.
- HOLES MUST BE DRILLED, UNLESS OTHERWISE SPECIFIED.
- LATERAL BOW OF PANEL MUST BE KEPT TO .031 TOLERANCE.
- PANEL MUST BE FREE OF ALL MACHINING MARKS, GOUGES AND SCRATCHES. IF NECESSARY, SAND FRONT OF PANEL WITH NO. 120 GRIT SANDPAPER.

FINISH NOTES:

- S404 YELLOW IRIDITE
- 5114 ZINC CHROMATE
- FED. STD 595 NO.37038 FLAT BLACKMATTE OR EQUIV.

FRONT & EDGET ONLY

1	BCT-10KA	
QTY / UNIT	MODEL USED ON	ASS'Y NO.
APPLICATION		
	CODE A	S401-451
NOTICE TO PERSONS RECEIVING THIS DRAWING		
THE TECHNICAL MATERIEL CORPORATION claims proprietary right in the material disclosed hereon. This drawing is issued in confidence for engineering information only and may not be reproduced or used to manufacture anything shown hereon without permission from THE TECHNICAL MATERIEL CORPORATION to the user. This drawing is loaned for mutual assistance and is subject to recall at any time.		

UNLESS OTHERWISE SPECIFIED DIMENSIONS ARE IN INCHES AND INCLUDE CHEMICALLY APPLIED OR PLATED FINISHES

TOLERANCES ON

DECIMALS	FRACTIONS
.X ± .05	± 1/64
.XX ± .01	ANGLES
.XXX ± .005	± 0° .30'

MATERIAL 1/8 ALUMINUM 2024-T3

FINISH SEE NOTES

QTY. REQ.	ITEM	PART NO.	DESCRIPTION	SYMBOL
			LIST OF MATERIAL SK3290-MS1000	
FINAL APPROVAL		DATE	THE TECHNICAL MATERIEL CORP.	
MECH. DES.		DATE	MAMARONECK, NEW YORK	
ELECT. DES.		DATE	PANEL, METER	
CHECKED		DATE		
DRAWN		DATE		
SIZE	CODE IDENT.NO.	DWG NO.	ISSUE	
C	82679	MS5167-1000	Ø	
SCALE	1:2	SHEET	OF	