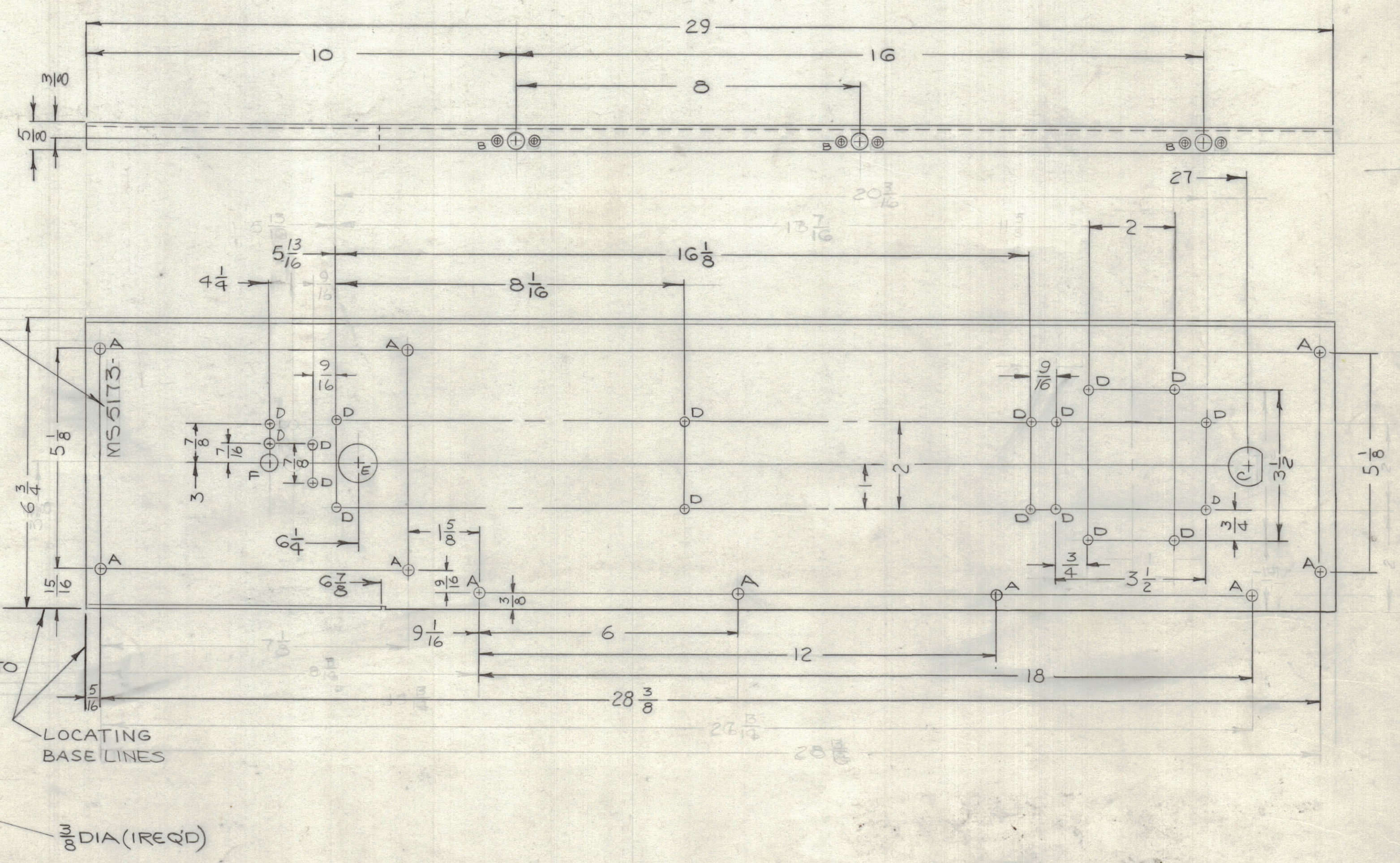
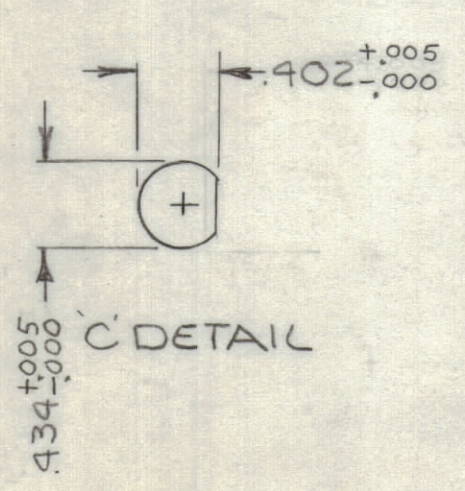


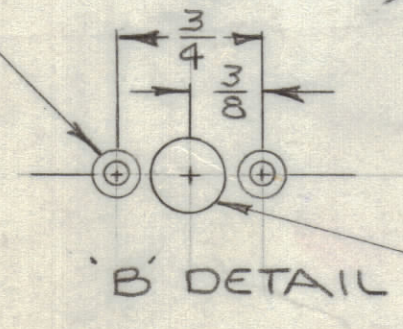
REVISIONS						
ZONE	LTR	DESCRIPTION	DATE	E.M.N.NO	DRAFT	CHKD
	X	EXP RELEASE	11-15-67			
	X1	DWG NO WAS MS5173	12-15-67			
	Ø	ORIGINAL RELEASE FOR PRODUCTION	4-1-68	Ø		
	A	ADDED 9/16 DIM.	10/11/68	19069		EPM



MARK TMC P/N
1/8 HIGH GOTHIC
W/LATEST REV. LETTER



DR. 104 DIA. C'SINK 82° TO
.204 DIA (2 REQ'D)



HOLES	DESCR	REQ'D
A	13/64 DIA	10
B	SEE DETAIL	3
C	SEE DETAIL	1
D	11/64 DIA	18
E	7/8 DIA	1
F	3/8 DIA	1

UNLESS OTHERWISE SPECIFIED:
1. USE MATERIAL THICKNESS FOR MAXIMUM RADIUS ON ALL BENDS
2. ALL ANGULAR BENDS 90 DEGREES
3. REMOVE ALL BURRS AND SHARP EDGES

1	BCT-10KA	
QTY / UNIT	MODEL USED ON	ASS'Y NO.
APPLICATION		
CODE	S401-451	
A		

NOTICE TO PERSONS RECEIVING THIS DRAWING
THE TECHNICAL MATERIEL CORPORATION claims proprietary right in the material disclosed hereon. This drawing is issued in confidence for engineering information only and may not be reproduced or used to manufacture anything shown hereon without permission from THE TECHNICAL MATERIEL CORPORATION to the user. This drawing is loaned for mutual assistance and is subject to recall at any time.

REF: LD 2284

QTY. REQ.	ITEM	PART NO.	DESCRIPTION	SYMBOL		
F. BODETTI LIST OF MATERIALS K3290-MS 2005						
FINAL APPROVAL		DATE	THE TECHNICAL MATERIEL CORP. MAMARONECK, NEW YORK PLATE, REAR (LFE) DRAWER			
MECH. DES.		DATE				
ELECT. DES.		DATE				
CHECKED		DATE				
DRAWN		DATE	SIZE	CODE IDENT. NO.	DWG NO.	ISSUE
			C	82679	MS 5173	A
			SCALE 1:2	SHEET OF		

UNLESS OTHERWISE SPECIFIED DIMENSIONS ARE IN INCHES AND INCLUDE CHEMICALLY APPLIED OR PLATED FINISHES

TOLERANCES ON

DECIMALS	FRACTIONS
.X ± .05	± 1/64
.XX ± .01	ANGLES
.XXX ± .005	± 0° -30'

MATERIAL: 081 ALUMINUM
5052-H32

FINISH: YELLOW IRIDITE
S404