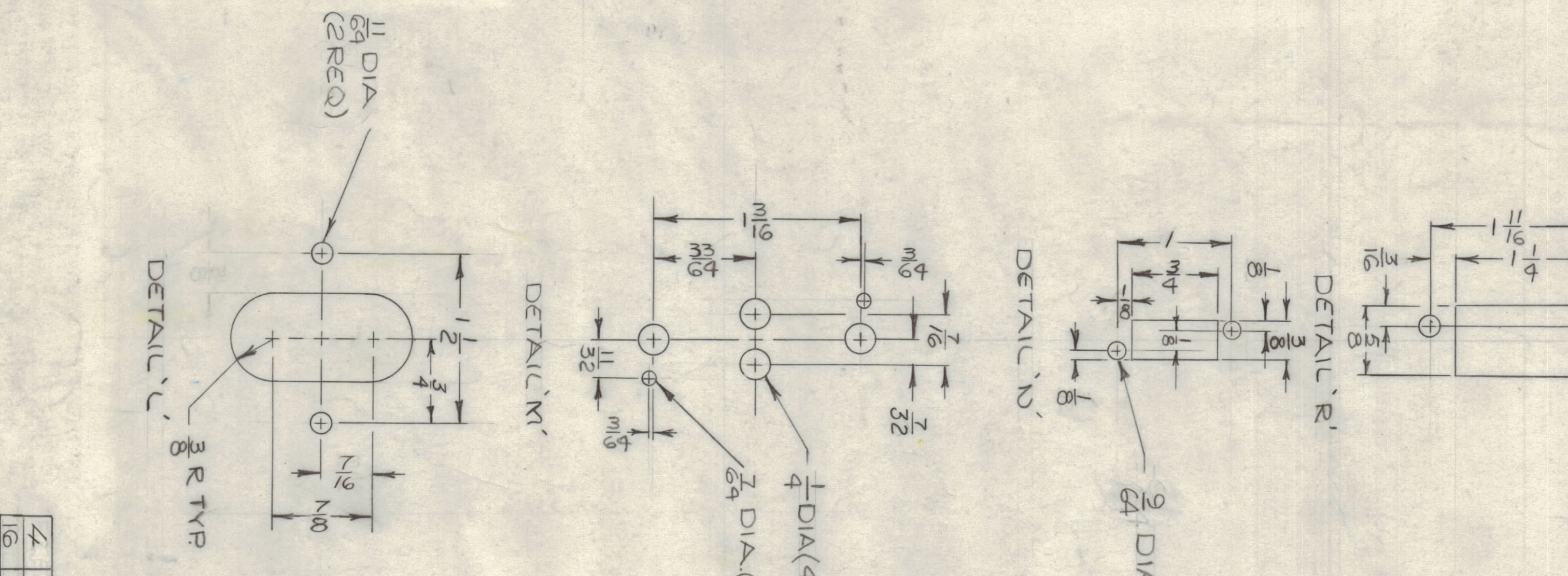
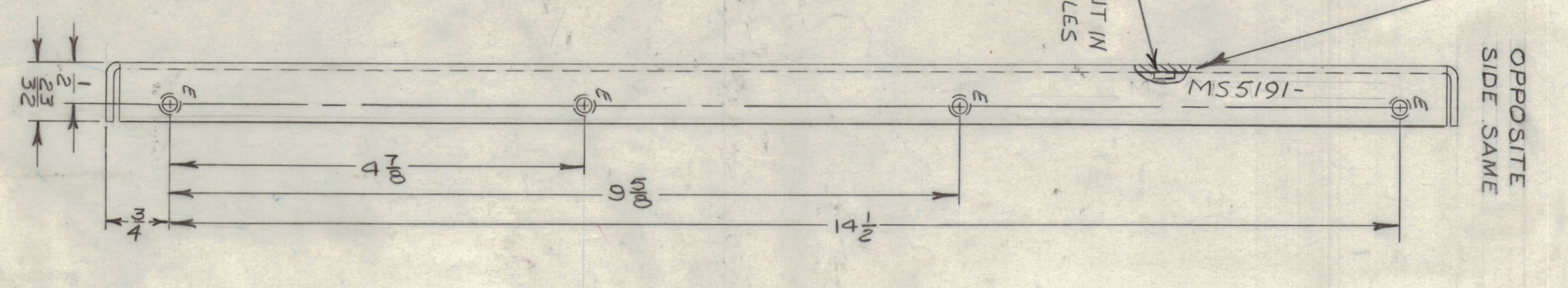
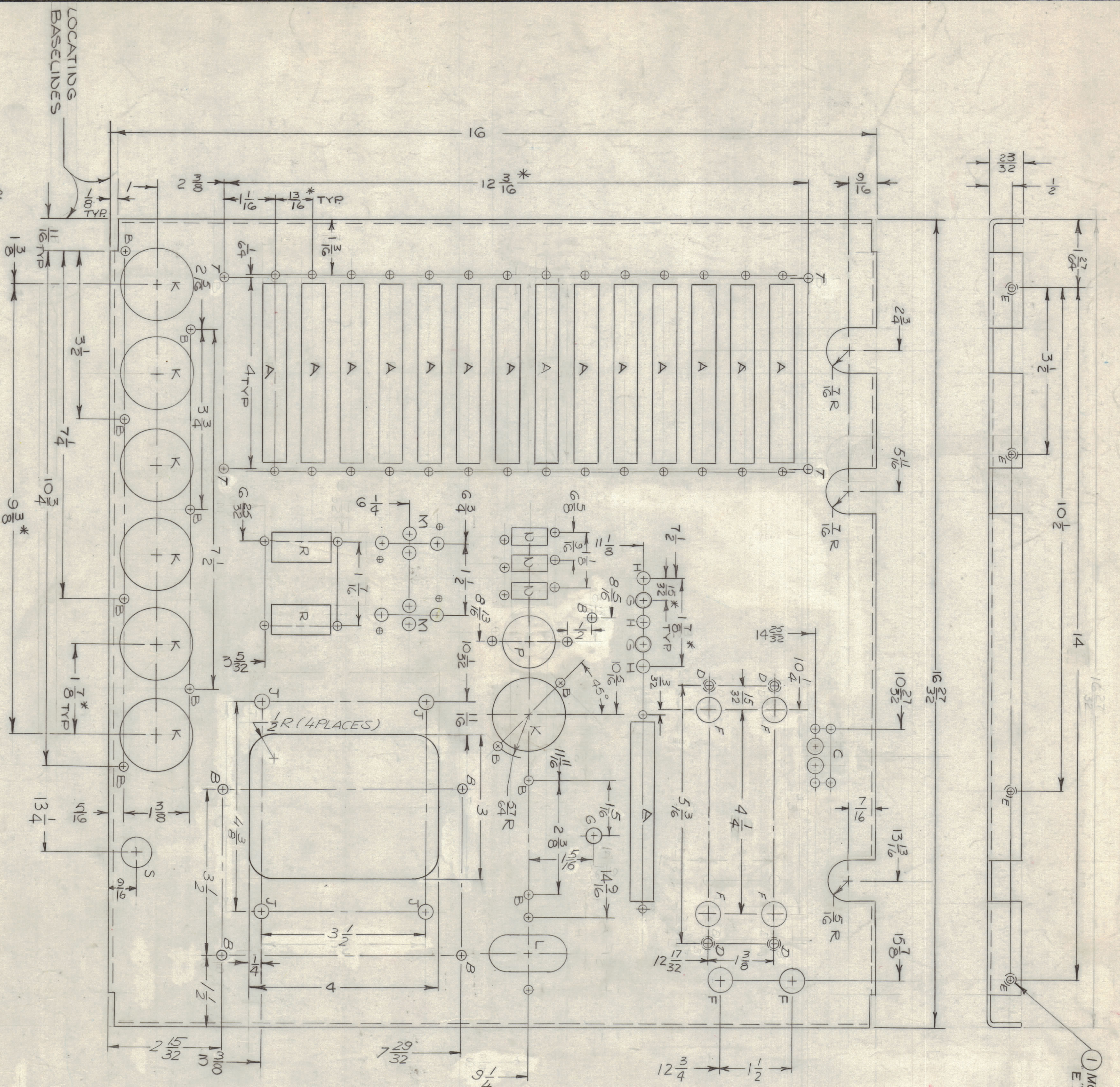


ZONE	LTR	DESCRIPTION	DATE	E.M.N.N.D	DRAGL	CHKD	APPD
X	X1	EXP. RELEASE	12/21/67				
X	X2	SHOLE ADDED 3/8 SLOT & F' RELOCATED	1/16/68				
X	X3	COMPLETELY REV.	2/26/68				
X	X4	"P" DETAIL RELOCATED & REV.	4/4/68				
X	X5	ORIGINAL RELEASE	4/16/68				
X	X6	REVISED & UPDATED	9/26/68				

MARK TRC P/N HIGH GOTHIC W/LATEST REV. LETTER



\* NOTE: TOLERANCES NOT ACCUMULATIVE

HOLE	DESCRIPTION	REQ.
A	SEE DETAIL	15
B	11/64 DIA.	16
C	SEE DETAIL	1
D	.197-.194 DIA.	4
E	.221-.224 DIA.	16
F	1/2 DIA.	6
G	5/16 DIA.	3
H	15/64 DIA.	3
J	9/32 DIA.	4
K	1-1/2 DIA.	7
L	SEE DETAIL	1
M	SEE DETAIL	2
N	SEE DETAIL	3
P	SEE DETAIL	1
R	SEE DETAIL	1
S	5/8 DIA.	2
T	7/32 DIA.	4

UNLESS OTHERWISE SPECIFIED:  
 1. USE MATERIAL THICKNESS FOR MAXIMUM RADIUS ON ALL BENDS  
 2. ALL ANGULAR BENDS 90 DEGREES  
 3. REMOVE ALL BURRS AND SHARP EDGES  
 4. MOUNT INSERTS AFTER FINISHING

REF. LD2253  
 UNLESS OTHERWISE SPECIFIED DIMENSIONS ARE IN INCHES AND INCLUDE CHEMICALLY APPLIED OR FLATED FINISHES

TOLERANCES ON  
 DECIMALS  
 XX ± .05  
 XXX ± .005

LIST OF MATERIAL  
 THE TECHNICAL MATERIEL CORP.  
 MAMARONECK, NEW YORK

QTY / UNIT	RTD-4	ASSY NO.
MODEL USED ON	APPLICATION	
CODE	SA401-451	

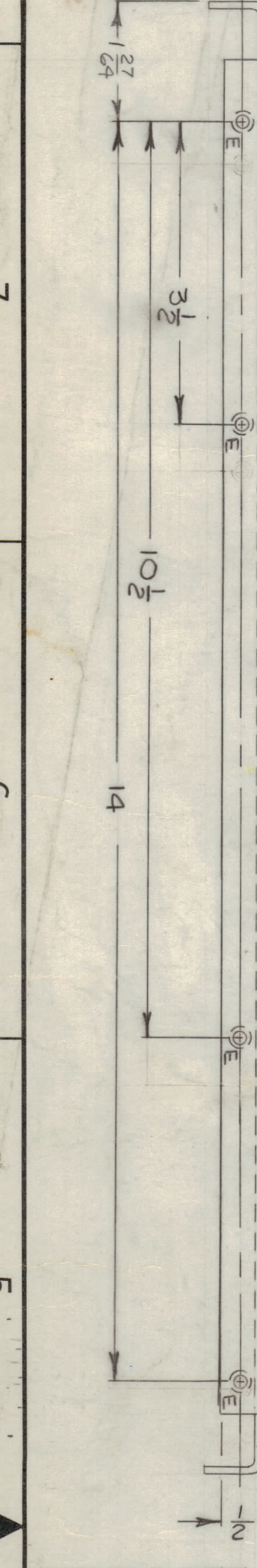
NOTICE TO PERSONS RECEIVING THIS DRAWING  
 THE TECHNICAL MATERIEL CORPORATION claims proprietary right in the material disclosed herein. No manufacture, reproduction, or use of any part of this drawing without the written permission of the Technical Materiel Corporation is authorized. This drawing is loaned for mutual assistance and is subject to recall at any time.

FINISH 5A04  
 YELLOW IRIDITE

DATE	11/19/68
DATE	12-21-67
DATE	
DATE	
DATE	

SCALE 3/4

LOCATING BASELINES



SIZE CODE IDENT. NO. DWG. NO.	D 82679	MS 5191
SCALE	3/4	
SHEET		OF
ISSUE		