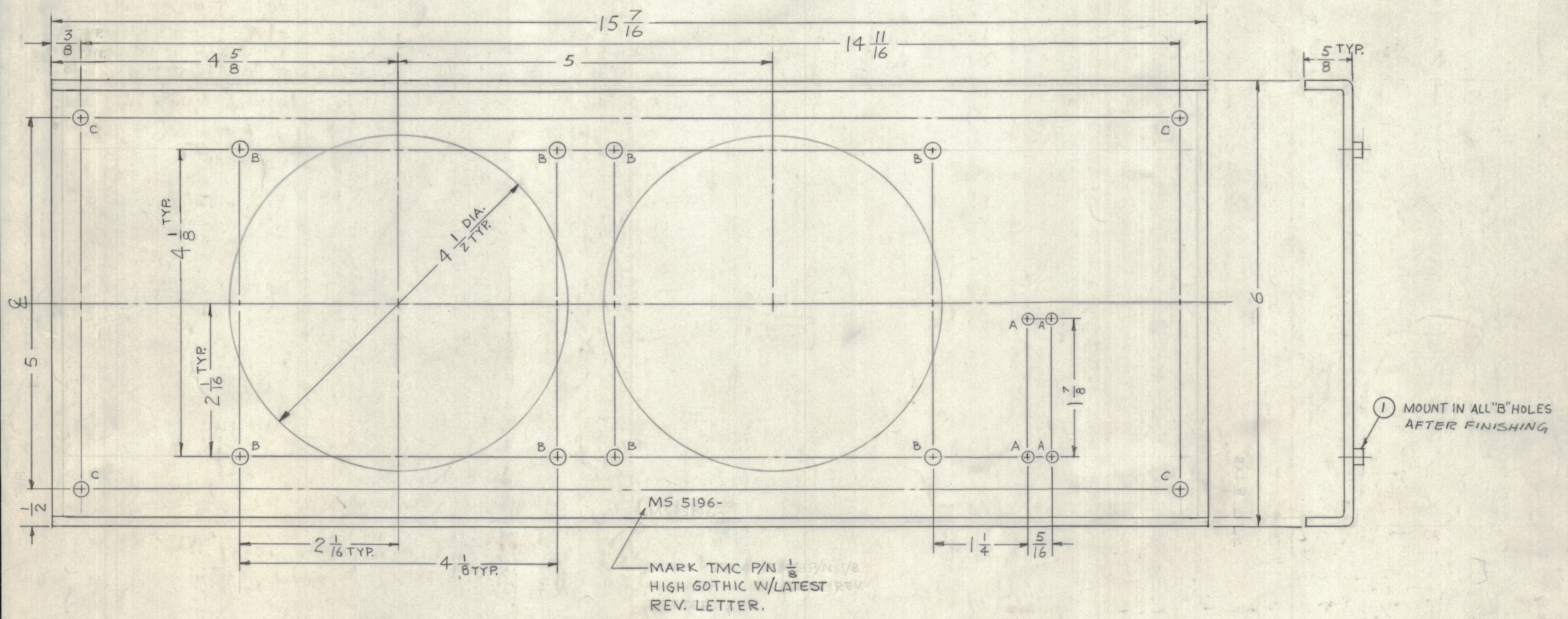


REVISIONS						
ZONE	LTR	DESCRIPTION	DATE	E.M.N.NO	DRAFT	CHKD APPD
	X	EXP. RELEASE	9-29-67		H.G.	1/1/0003 RA
	Ø	ORIGINAL RELEASE FOR PRODUCTION	2-19-69		EG	EG



HOLES	DESCRIPTION	REQ'D
A	9/64 DIA	4
B	.191-.194	8
C	3/16 DIA	4
D	3/16 DIA	4

- UNLESS OTHERWISE SPECIFIED:
- USE MATERIAL THICKNESS FOR MAXIMUM RADIUS ON ALL BENDS
 - ALL ANGULAR BENDS 90 DEGREES
 - REMOVE ALL BURRS AND SHARP EDGES
 - MOUNT INSERTS AFTER FINISHING

1	GPT-10KLF	
1	GPT-40KEL	
1	GPT-10KRL	
QTY / UNIT	MODEL USED ON	ASS'Y NO.
APPLICATION		
	CODE A	3401-451

NOTICE TO PERSONS RECEIVING THIS DRAWING
 THE TECHNICAL MATERIEL CORPORATION claims proprietary right in the material disclosed hereon. This drawing is issued in confidence for engineering information only and may not be reproduced or used to manufacture anything shown hereon without permission from THE TECHNICAL MATERIEL CORPORATION to the user. This drawing is loaned for mutual assistance and is subject to recall at any time.

UNLESS OTHERWISE SPECIFIED DIMENSIONS ARE IN INCHES AND INCLUDE CHEMICALLY APPLIED OR PLATED FINISHES

TOLERANCES ON

DECIMALS	FRACTIONS
.X ± .05	± 1/64
.XX ± .01	ANGLES
.XXX ± .005	± 0° -30'

MATERIAL .081 THK ALUM
 5052-H32
 FINISH 3404 YEL
 IRIDITE

QTY. REQ.	ITEM	PART NO.	DESCRIPTION	SYMBOL
8	1	NT 129-632-4	NUT, PLAIN, SPLINE	B
F. BUDETTI LIST OF MATERIAL J20645-000				
FINAL APPROVAL		DATE	THE TECHNICAL MATERIEL CORP.	
MECH. DES.		DATE	MAMARONECK, NEW YORK	
ELECT. DES.		DATE	CHASSIS, BLOWER	
CHECKED		DATE	SIZE	CODE IDENT. NO.
DRAWN		DATE	C	82679
			DWG NO.	MS 5196
			ISSUE	Ø
SCALE 1:1				SHEET OF