

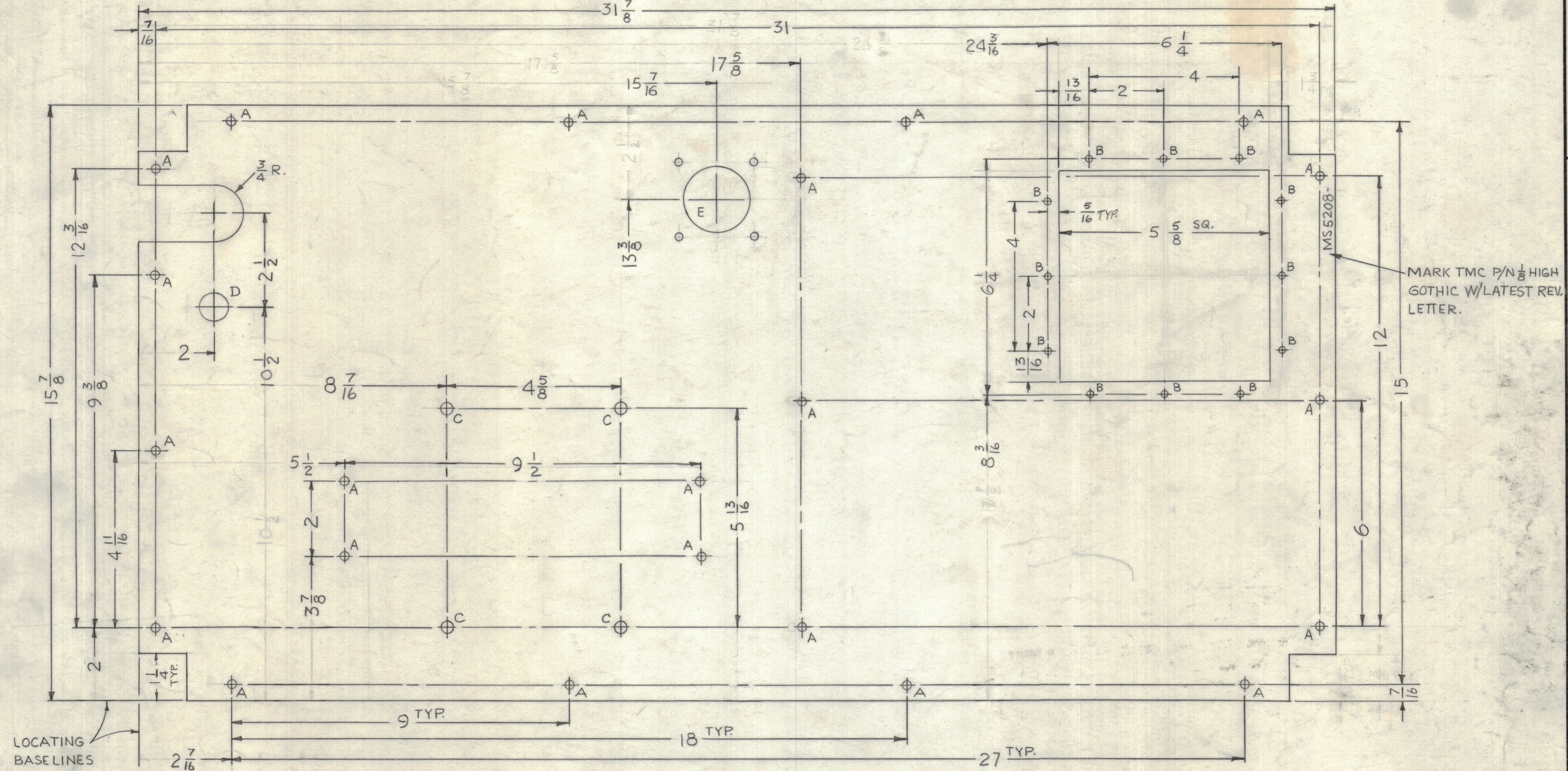
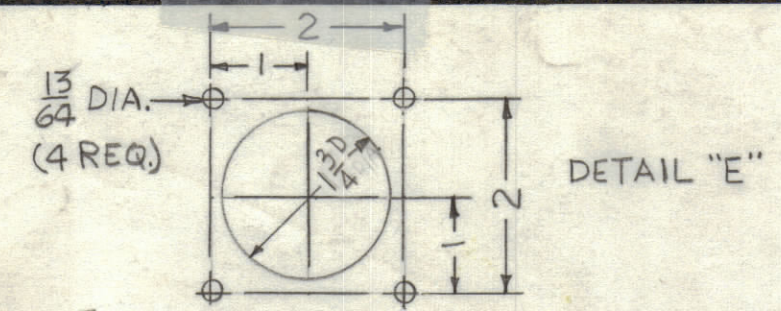
4

3

2

1

REVISIONS						
ZONE	LTR	DESCRIPTION	DATE	E.M.N.NO	DRAFT	CHKD APPD
	X	EXP. RELEASE	11-21-67	+	H.S.	<i>[Signature]</i>
	Ø	ORIGINAL RELEASE FOR PRODUCTION	4/2/68	Ø	H.S.	<i>[Signature]</i>



HOLE	DESCRIPTION	REQ
A	15/64 DIA.	22
B	11/64 DIA.	12
C	5/16 DIA.	4
D	3/4 DIA.	1
E	SEE DETAIL	1

1	BCT-10KA	
QTY / UNIT	MODEL USED ON	ASS'Y NO.
APPLICATION		
CODE	S401-451	
A		

NOTICE TO PERSONS RECEIVING THIS DRAWING  
 THE TECHNICAL MATERIEL CORPORATION claims proprietary right in the material disclosed hereon. This drawing is issued in confidence for engineering information only and may not be reproduced or used to manufacture anything shown hereon without permission from THE TECHNICAL MATERIEL CORPORATION to the user. This drawing is loaned for mutual assistance and is subject to recall at any time.

UNLESS OTHERWISE SPECIFIED DIMENSIONS ARE IN INCHES AND INCLUDE CHEMICALLY APPLIED OR PLATED FINISHES

TOLERANCES ON  
 DECIMALS: .X ± .05, .XX ± .01, .XXX ± .005  
 FRACTIONS: ± 1/64, ANGLES ± 0° -30'

MATERIAL 1/8 ALUMINUM 5052-H32  
 FINISH S404 YEL. IRIDITE

QTY. REQ.	ITEM	PART NO.	DESCRIPTION	SYMBOL
	F. BUDETTI		LIST OF MATERIAL	SK3290-MS 2009
	FINAL APPROVAL	DATE	<b>THE TECHNICAL MATERIEL CORP.</b> MAMARONECK, NEW YORK  <b>PLATE, MTG, FIL XFMR</b>	
	<i>[Signature]</i>	4/15/68		
	MECH. DES.	DATE		
	<i>[Signature]</i>	4-15-68		
	ELECT. DES.	DATE		
	CHECKED	DATE		
	<i>[Signature]</i>	4-2-68		
	DRAWN	DATE		
	H.S.	11-21-67		
SIZE	CODE IDENT. NO.	DWG NO.	ISSUE	
C	82679	MS 5208	Ø	
SCALE	1:2	SHEET	OF	