

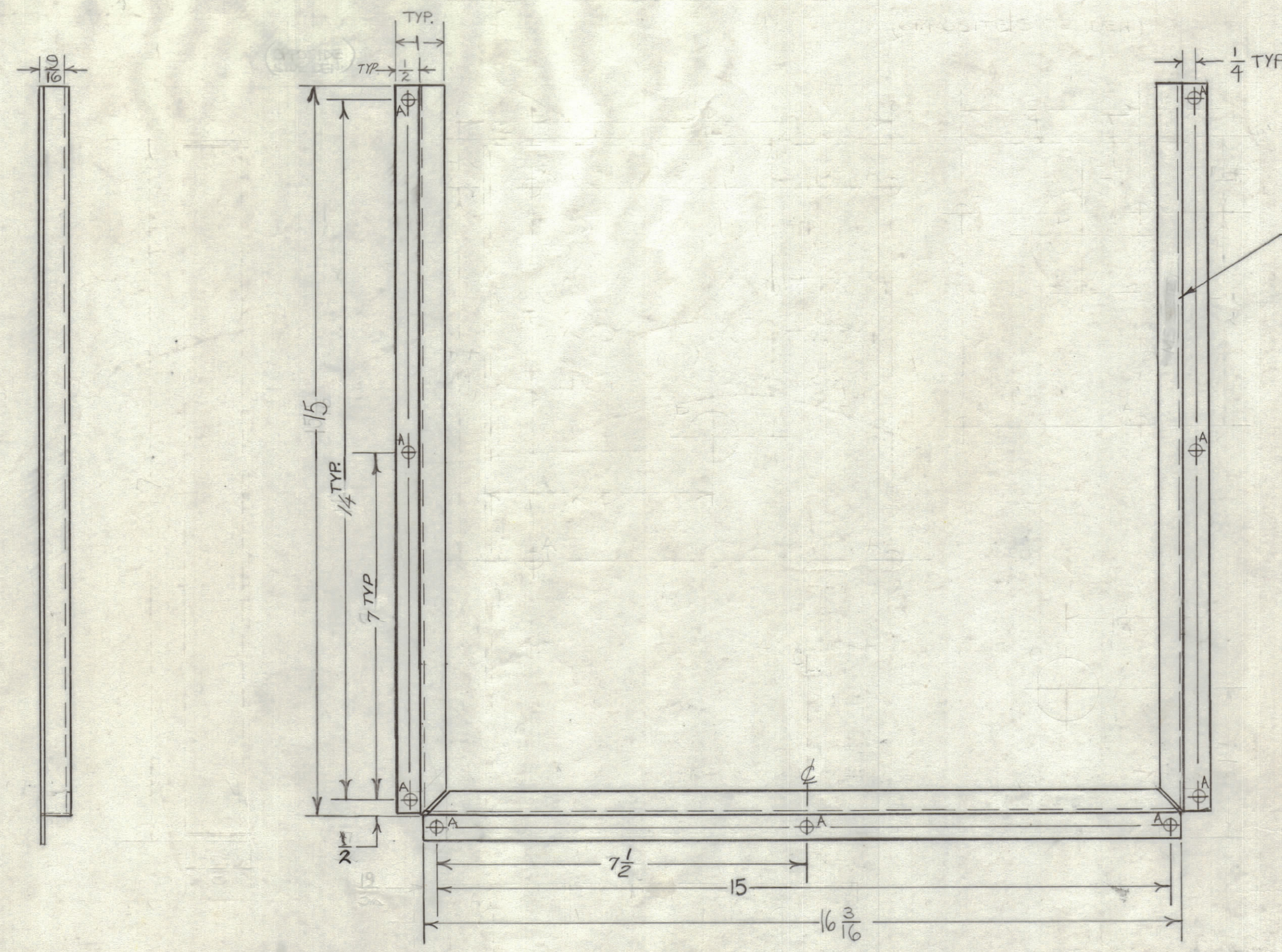
4

3

2

1

REVISIONS						
ZONE	LTR	DESCRIPTION	DATE	E.M.N.NO	DRAFT	CHKD APPD
	X	EXP. RELEASE	12-13-67	H	END	M/SOZ
	Ø	ORIGINAL RELEASE FOR PRODUCTION	4/2/68	Ø	H.S.	KO
	A	DIM CHG. FR 11 TYP TO 14 TYP.	8-11-69	19529	GE	KO FB



MARK TMC P/N M55212-
1/8 HIGH GOTHIC
W/LATEST REV. LETTER.
ON REAR.

HOLE	DESCRIPTION	REQ.
A	1/64 DIA.	9

FINISH NOTES 1. S404 - YEL IRIDITE
OUTSIDE AND EDGES ONLY }
2. S114 - ZINC CHROMATE
3. S521 - TMC GRAY
TEK VIN

FINISH NOTES:
1. S404 - IRIDITE 14-2 AL-COAT.
2. S114 - ZINC CHROMATE PRIMER } FRONT AND
3. S115 - SMOOTH GRAY ENAMEL } EDGES ONLY
OR
PRIME AND PAINT PER CUSTOMER'S SPECIFICATIONS.

UNLESS OTHERWISE SPECIFIED:
1. USE MATERIAL THICKNESS FOR MAXIMUM RADIUS ON ALL BENDS
2. ALL ANGULAR BENDS 90 DEGREES
3. REMOVE ALL BURRS AND SHARP EDGES

OUTSIDE VIEW SHOWN

1	BCT-10KA	
QTY / UNIT	MODEL USED ON	ASS'Y NO.
APPLICATION		
CODE	S401-451	
A		

NOTICE TO PERSONS RECEIVING THIS DRAWING
THE TECHNICAL MATERIEL CORPORATION claims proprietary right in the material disclosed hereon. This drawing is issued in confidence for engineering information only and may not be reproduced or used to manufacture anything shown hereon without permission from THE TECHNICAL MATERIEL CORPORATION to the user. This drawing is loaned for mutual assistance and is subject to recall at any time.

UNLESS OTHERWISE SPECIFIED DIMENSIONS ARE IN INCHES AND INCLUDE CHEMICALLY APPLIED OR PLATED FINISHES

TOLERANCES ON
DECIMALS FRACTIONS
.X ± .05 ± 1/64
.XX ± .01 ANGLES
.XXX ± .005 ± 0° -30'

QTY. REQ.	ITEM	PART NO.	DESCRIPTION	SYMBOL		
BUDETTI LIST OF MATERIAL SK3290-MS2022						
FINAL APPROVAL	DATE		THE TECHNICAL MATERIEL CORP. MAMARONECK, NEW YORK			
MECH. DES.	DATE					
ELECT. DES.	DATE					
CHECKED	DATE		BRACKET, MTG, FILTER			
DRAWN	DATE					
MATERIAL .064 ALUMINUM 5052-H32			SIZE	CODE IDENT. NO.	DWG NO.	ISSUE
FINISH SEE NOTES			C	82679	MS 5212	A
			SCALED	NOT SCALE	SHEET	OF

4

3

2

1

MS 5212
A
B

A