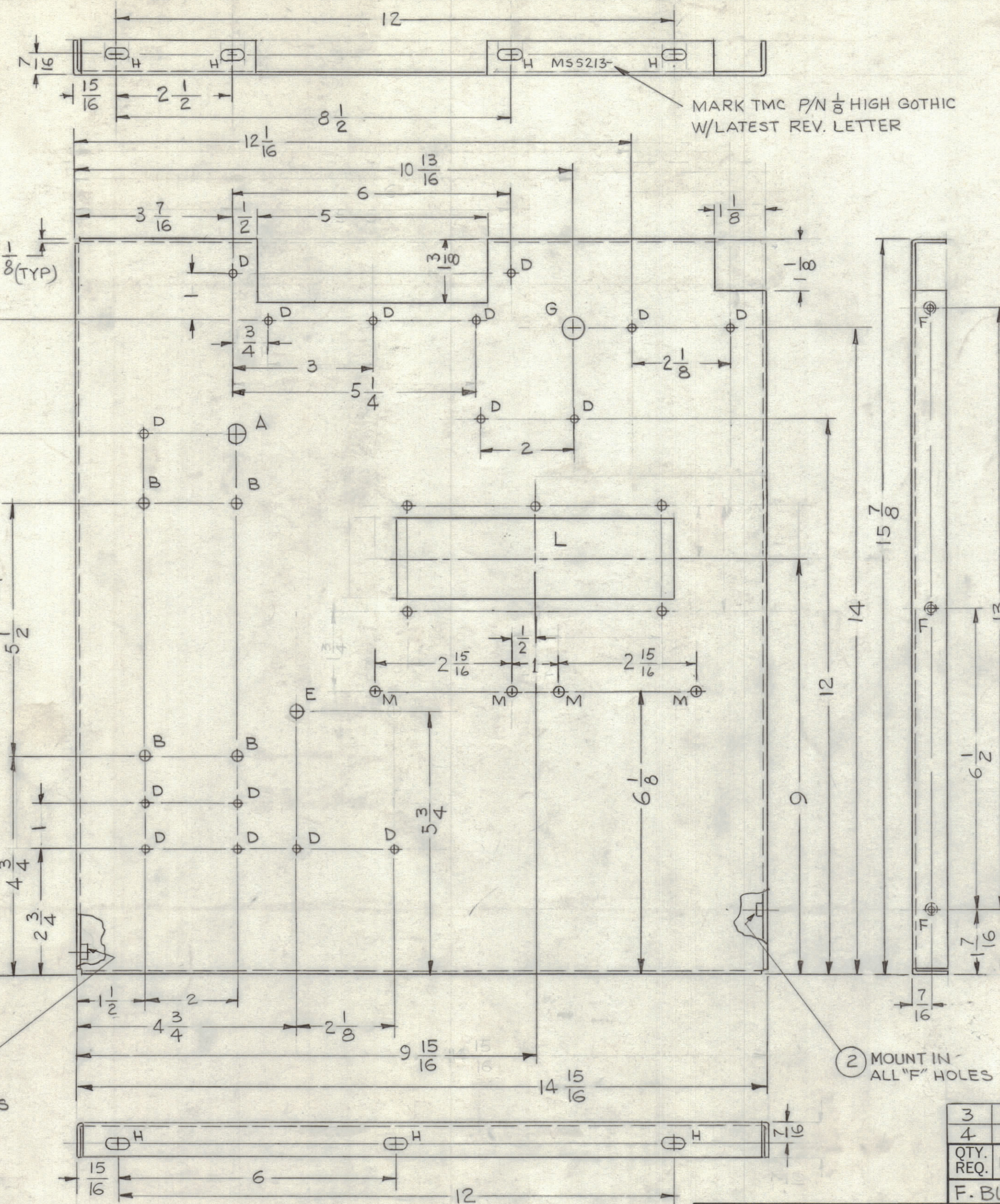
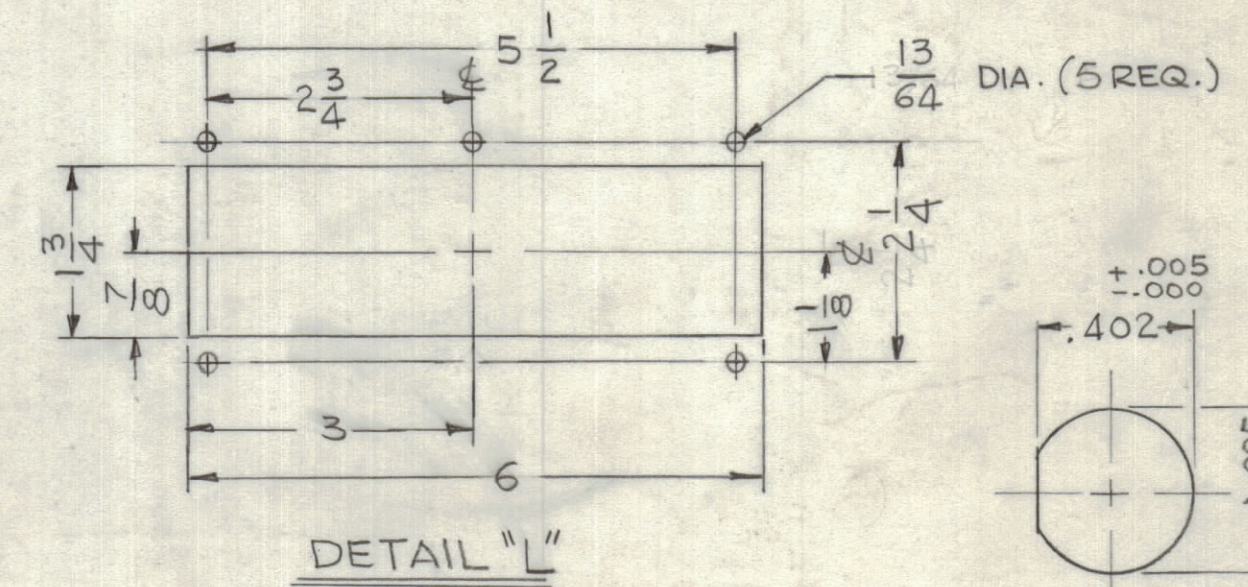


REVISIONS						
ZONE	LTR	DESCRIPTION	DATE	E.M.N.NO	DRAFT	CHKD APPD
	X	EXP. RELEASE	10-9-67	X	G.D.L	
	XI	"M" 4 HOLES ADDED "D" WAS 15 HOLES	11-20-67		NZ	
	Ø	ORIG. RELEASE FOR PROD.	5-19-68	Ø	R.G.	



MARK TMC P/N 1/8 HIGH GOTHIC W/LATEST REV. LETTER

HOLE	DESCRIPTION	REQ
A	SEE DETAIL	1
B	15/64 DIA.	4
C	.250 - .253 DIA.	4
D	11/64 DIA	16
E	5/16 DIA	1
F	.191 - .194 DIA.	3
G	1/2 DIA.	1
H	1/4 X 1/2 SLOT	7
L	SEE DETAIL	1
M	13/64 DIA.	4



1 MOUNT IN ALL "C" HOLES

2 MOUNT IN ALL "F" HOLES

- UNLESS OTHERWISE SPECIFIED:
1. USE MATERIAL THICKNESS FOR MAXIMUM RADIUS ON ALL BENDS
 2. ALL ANGULAR BENDS 90 DEGREES
 3. REMOVE ALL BURRS AND SHARP EDGES
 4. MOUNT INSERTS AFTER FINISHING

1	BCT-10KA	
QTY / UNIT	MODEL USED ON	ASS'Y NO.
APPLICATION		
	CODE A	S401-451

NOTICE TO PERSONS RECEIVING THIS DRAWING
 THE TECHNICAL MATERIEL CORPORATION claims proprietary right in the material disclosed hereon. This drawing is issued in confidence for engineering information only and may not be reproduced or used to manufacture anything shown hereon without permission from THE TECHNICAL MATERIEL CORPORATION to the user. This drawing is loaned for mutual assistance and is subject to recall at any time.

QTY. REQ.	ITEM	PART NO.	DESCRIPTION	SYMBOL
3	2	NT129-632-4	NUT, PLN SPLINE	F
4	1	NT129-1032-4	NUT, PLN SPLINE	C

F. BUDETTI LIST OF MATERIAL SK 3290-MS2010

FINAL APPROVAL	DATE
<i>[Signature]</i>	5/13/68
MECH. DES.	DATE
<i>[Signature]</i>	5/13/68
ELECT. DES.	DATE
CHECKED	DATE
<i>[Signature]</i>	5-10-68
DRAWN	DATE
G.D.L	10-6-67

THE TECHNICAL MATERIEL CORP.
 MAMARONECK, NEW YORK

CHASSIS, FEEDTHRU FILAMENT

SIZE	CODE IDENT. NO.	DWG NO.	ISSUE
C	82679	MS 5213	Ø
SCALE	1:2	SHEET	OF