

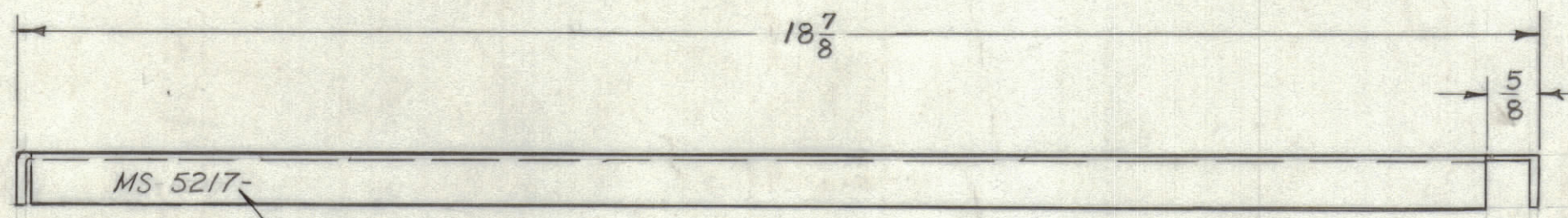
4

3

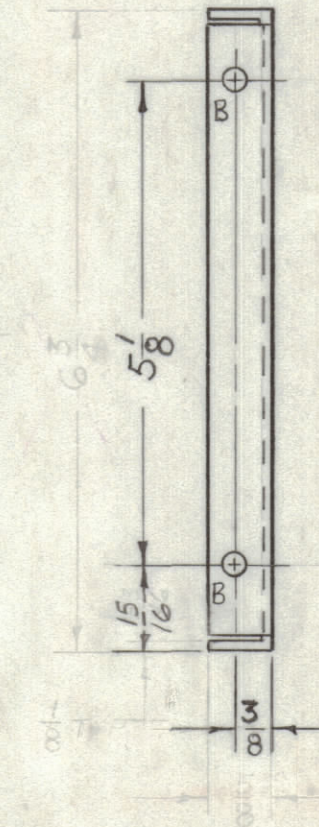
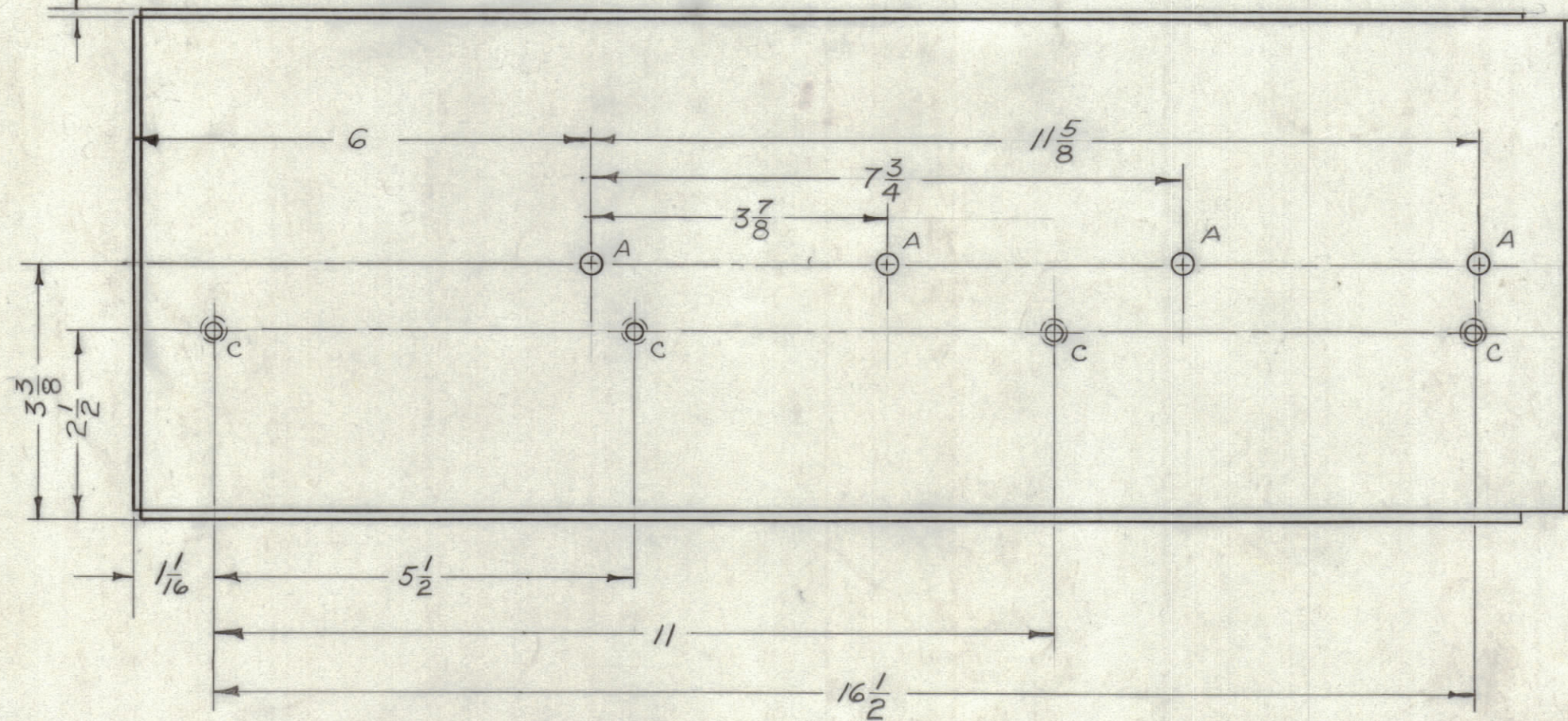
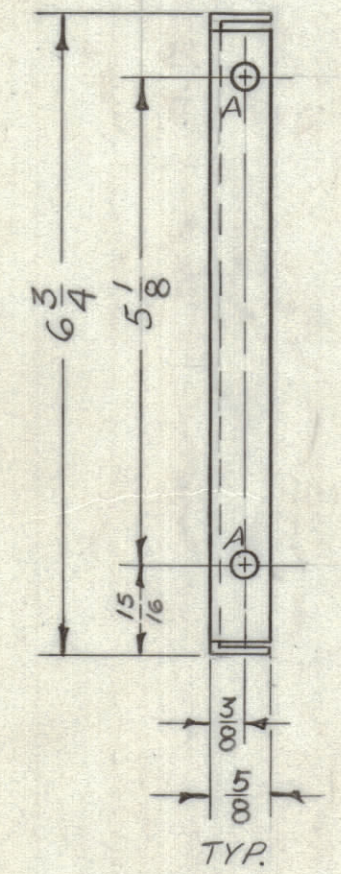
2

1

REVISIONS						
ZONE	LTR	DESCRIPTION	DATE	E.M.N.NO	DRAFT	CHKD APPD
	X	EXPERIMENTAL RELEASE	10/11/67		EG	AP
		ORIGINAL RELEASE FOR PRODUCTION	2-19-69		EG	AP



HOLE	DESCRIPTION	REQ.
A	15/16 DIA.	6
B	13/16 DIA.	2
C	DR. 1/4 DIA. C'SINK 82° TO .284 DIA.	4



MS 5217

- UNLESS OTHERWISE SPECIFIED:
- USE MATERIAL THICKNESS FOR MAXIMUM RADIUS ON ALL BENDS
 - ALL ANGULAR BENDS 90 DEGREES
 - REMOVE ALL BURRS AND SHARP EDGES

1	GPT-10 KRL	
QTY / UNIT	MODEL USED ON	ASS'Y NO.
APPLICATION		
	CODE A	S401-451

NOTICE TO PERSONS RECEIVING THIS DRAWING
 THE TECHNICAL MATERIEL CORPORATION claims proprietary right in the material disclosed hereon. This drawing is issued in confidence for engineering information only and may not be reproduced or used to manufacture anything shown hereon without permission from THE TECHNICAL MATERIEL CORPORATION to the user. This drawing is loaned for mutual assistance and is subject to recall at any time.

UNLESS OTHERWISE SPECIFIED DIMENSIONS ARE IN INCHES AND INCLUDE CHEMICALLY APPLIED OR PLATED FINISHES

TOLERANCES ON

DECIMALS	FRACTIONS
.X ± .05	± 1/64
.XX ± .01	ANGLES
.XXX ± .005	± 0° -30'

MATERIAL .081 ALUMINUM
5052-H32

FINISH S404 YELLOW IRIDIUM

QTY. REQ.	ITEM	PART NO.	DESCRIPTION	SYMBOL
	F. BUDETTI		LIST OF MATERIAL SK60040-MS 2204	
	FINAL APPROVAL	DATE 2/17/69	THE TECHNICAL MATERIEL CORP. MAMARONECK, NEW YORK <i>PLATE, LEFT SIDE, MMX DRAWER</i>	
	MECH. DES.	DATE 2-17-69		
	ELECT. DES.	DATE		
	CHECKED	DATE 2/17/69		
	DRAWN	DATE 10/11/67		
SIZE	CODE IDENT.NO.	DWG NO.	ISSUE	
C	82679	MS 5217		
SCALE	1:2		SHEET	OF

4

3

2

1