

4

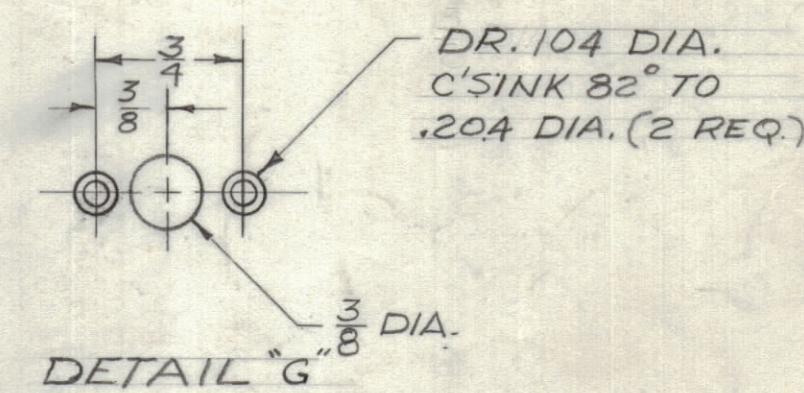
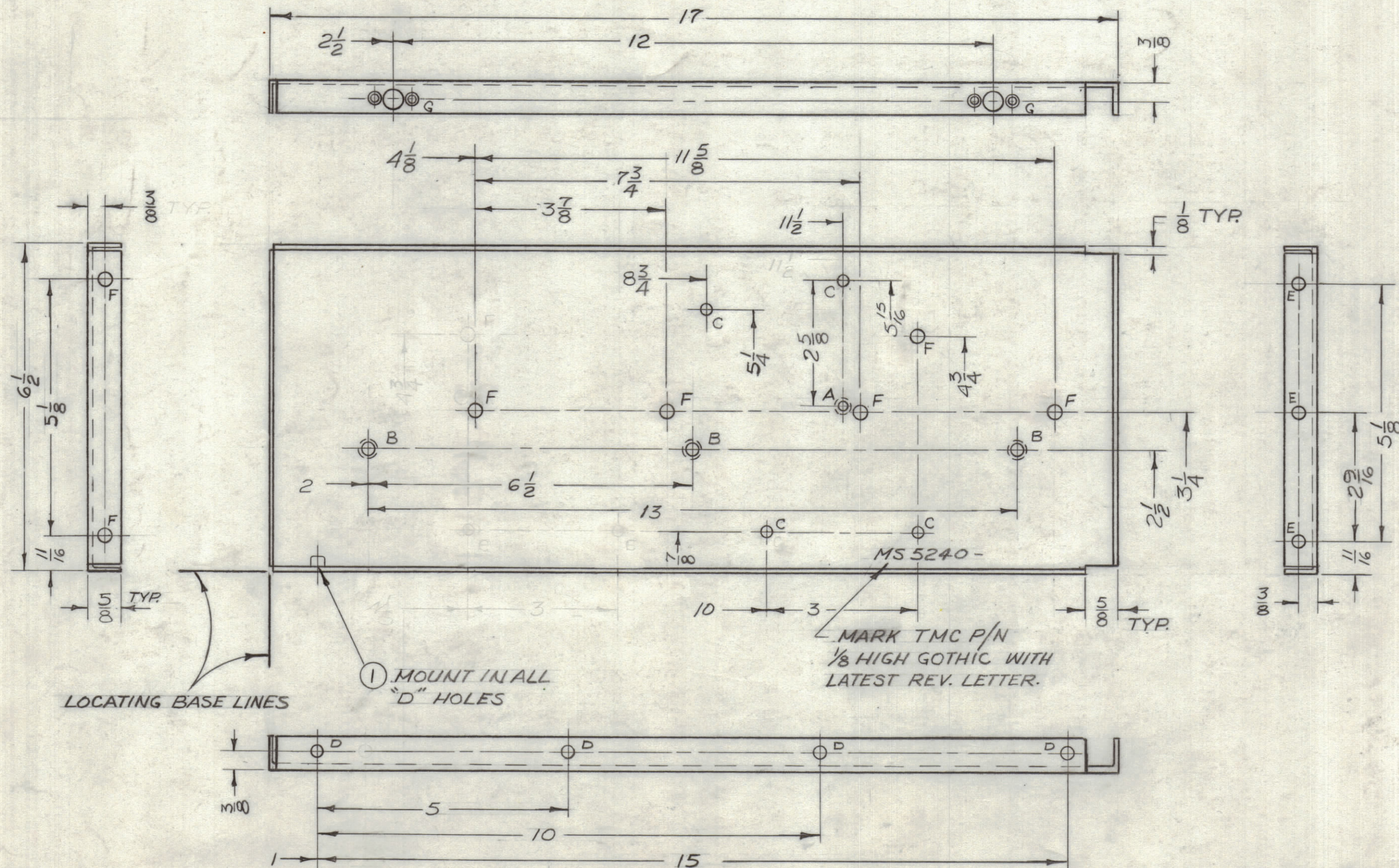
3

2

1

HOLES	DESCRIPTION	REQ.
A	DR.144 D.C'SINK 82° TO.284	1
B	DR.169 D.C'SINK 82° TO.337	3
C	1/64 DIA.	4
D	.191-.194 DIA.	4
E	13/64 DIA.	3
F	15/64 DIA.	7
G	SEE DETAIL	2

REVISIONS						
ZONE	LTR	DESCRIPTION	DATE	E.M.N.NO	DRAFT	CHKD APPD
	X	EXP. RELEASE	12/15/67	4	Eng	28
	XI	RELOCATE (2) C HOLES & (1) F	1-18-68	4	Eng	28
	Ø	ORIGINAL RELEASE FOR PRODUCTION	4/2/68	Ø	W.S.	28



A

- UNLESS OTHERWISE SPECIFIED:
1. USE MATERIAL THICKNESS FOR MAXIMUM RADIUS ON ALL BENDS
  2. ALL ANGULAR BENDS 90 DEGREES
  3. REMOVE ALL BURRS AND SHARP EDGES
  4. MOUNT INSERTS AFTER FINISHING

1	BCT-10 KA	AX 683
QTY / UNIT	MODEL USED ON	ASS'Y NO.
APPLICATION		
CODE	S 401-451	
NOTICE TO PERSONS RECEIVING THIS DRAWING		
THE TECHNICAL MATERIEL CORPORATION claims proprietary right in the material disclosed hereon. This drawing is issued in confidence for engineering information only and may not be reproduced or used to manufacture anything shown hereon without permission from THE TECHNICAL MATERIEL CORPORATION to the user. This drawing is loaned for mutual assistance and is subject to recall at any time.		

UNLESS OTHERWISE SPECIFIED DIMENSIONS ARE IN INCHES AND INCLUDE CHEMICALLY APPLIED OR PLATED FINISHES	
TOLERANCES ON	
DECIMALS	FRACTIONS
.X ± .05	± 1/64
.XX ± .01	ANGLES
.XXX ± .005	± 0° -30'
MATERIAL .081 ALUMINUM 5052 H32	
FINISH S404 YELLOW IRIDITE	

4	1	NT129-632-4	NUT, PLAIN SPLINE	D
QTY. REQ.	ITEM	PART NO.	DESCRIPTION	SYMBOL
F. BUDETTI LIST OF MATERIAL				
FINAL APPROVAL		DATE	THE TECHNICAL MATERIEL CORP.	
MECH. DES.		DATE	MAMARONECK, NEW YORK	
ELECT. DES.		DATE	PLATE, SIDE, LEFT	
CHECKED		DATE	SIZE CODE IDENT.NO. DWG NO. ISSUE	
DRAWN		DATE	C 82679 MS 5240 Ø	
SCALE 1:2			SHEET OF	

4

3

2

1