

4

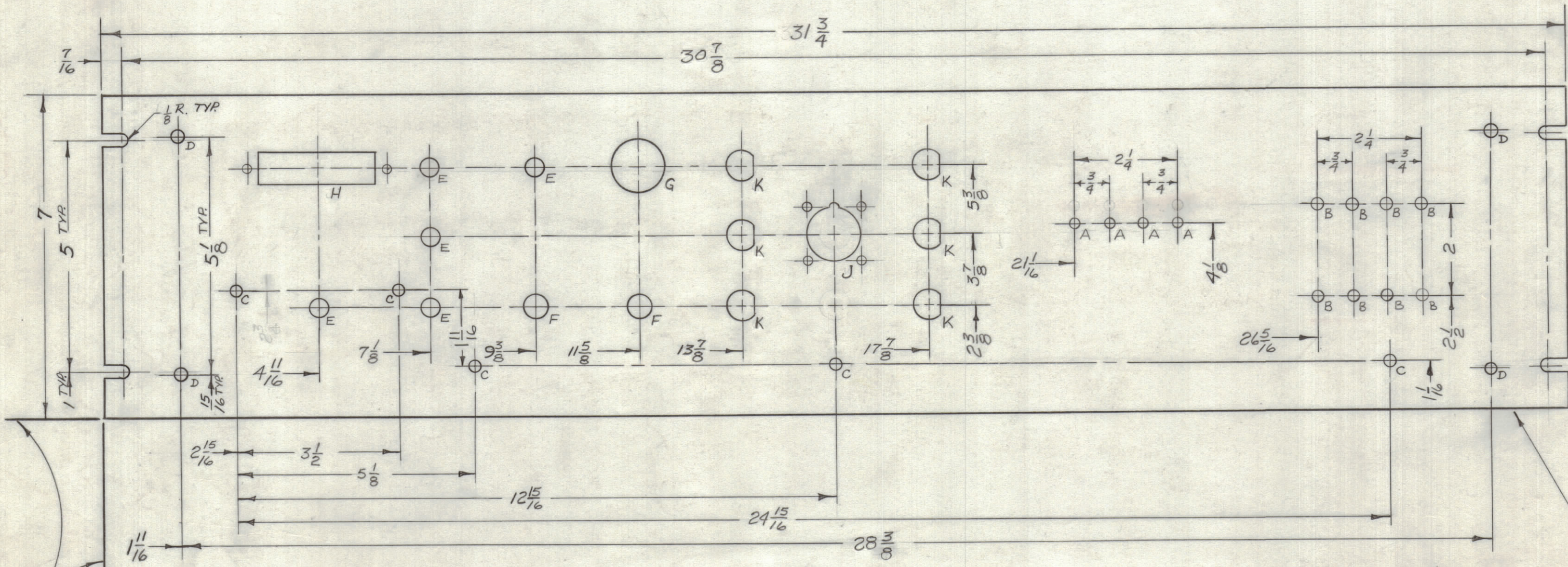
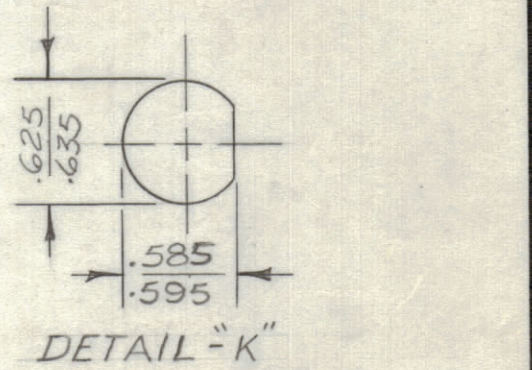
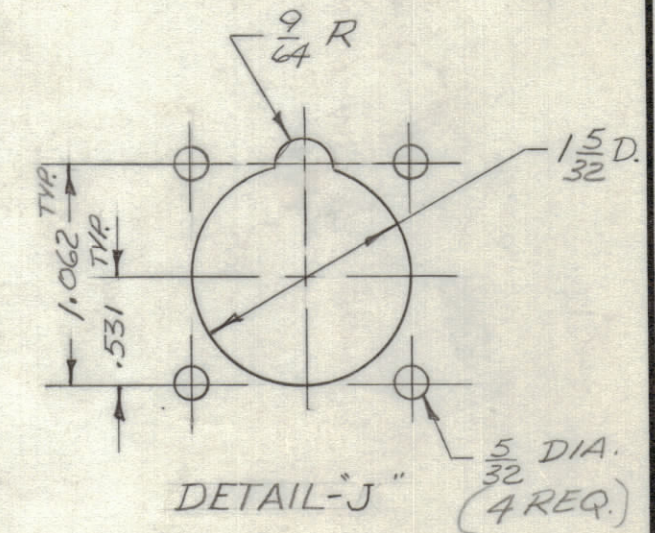
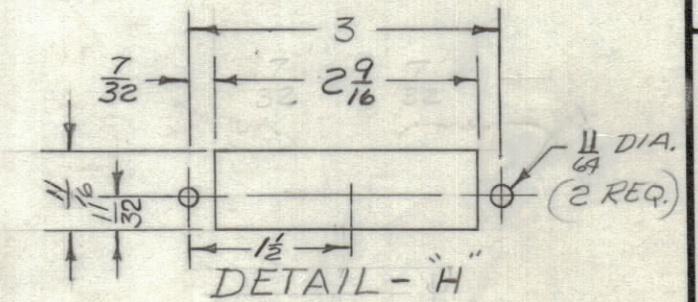
3

2

1

HOLE	DESCRIPTION	REQ.
A	3/16 DIA.	4
B	.187 ± .0005	8
C	13/64 DIA.	5
D	15/64 DIA.	4
E	3/8 DIA.	5
F	1/2 DIA.	2
G	1/8 DIA.	1
H	SEE DETAIL	1
J	SEE DETAIL	1
K	SEE DETAIL	6

REVISIONS						
ZONE	LTR	DESCRIPTION	DATE	E.M.N.NO	DRAFT	CHKD APPD
	X	EXP. RELEASE	11/21/67		ENJ	ENJ
	X1	ON "H" DETAIL 11/64 DIA. WAS 9/64 DIA.	12-13-67	+	HG	HG
	X2	"B" HOLE WAS #11 DRILL	4/1/68	X2	GDL	JA
	Ø	ORIGINAL RELEASE FOR PRODUCTION	4-1-68	Ø	HG	JA



LOCATING BASE LINES

MACHINING:

- MILL ALL EDGES.
- HOLES MUST BE DRILLED, UNLESS OTHERWISE SPECIFIED.
- LATERAL BOW OF PANEL MUST BE KEPT TO .031 TOLERANCE.
- PANEL MUST BE FREE OF ALL MACHINING MARKS, GOUGES AND SCRATCHES. IF NECESSARY, SAND FRONT OF PANEL WITH NO. 120 GRIT SANDPAPER.

- FINISH NOTES:**
- S404 - IRIDITE 14-2 AL-COAT.
 - S114 - ZINC CHROMATE PRIMER } FRONT AND EDGES ONLY
 - S115 - SMOOTH GRAY ENAMEL }

1	BCT-10KA	AX 683
QTY / UNIT	MODEL USED ON	ASS'Y NO.
APPLICATION		
CODE	S401-451	

NOTICE TO PERSONS RECEIVING THIS DRAWING
 THE TECHNICAL MATERIEL CORPORATION claims proprietary right in the material disclosed hereon. This drawing is issued in confidence for engineering information only and may not be reproduced or used to manufacture anything shown hereon without permission from THE TECHNICAL MATERIEL CORPORATION to the user. This drawing is loaned for mutual assistance and is subject to recall at any time.

UNLESS OTHERWISE SPECIFIED DIMENSIONS ARE IN INCHES AND INCLUDE CHEMICALLY APPLIED OR PLATED FINISHES

TOLERANCES ON

DECIMALS	FRACTIONS
.X ± .05	± 1/64
.XX ± .01	ANGLES
.XXX ± .005	± 0° -30'

MATERIAL 1/8 ALUMINUM 2024-T3

FINISH SEE FINISH NOTES

REF: LD 2269

QTY. REQ.	ITEM	PART NO.	DESCRIPTION	SYMBOL
	F. BUDETTI		LIST OF MATERIAL SK3290-MS5027	
FINAL APPROVAL		DATE	THE TECHNICAL MATERIEL CORP. MAMARONECK, NEW YORK <h1>PANEL, FRONT</h1>	
MECH. DES.		DATE		
ELECT. DES.		DATE		
CHECKED		DATE		
DRAWN		DATE		
SIZE	CODE IDENT. NO.	DWG NO.	ISSUE	
C	82679	MS 5246	Ø	
SCALE 1:2			SHEET	OF

4

3

2

1