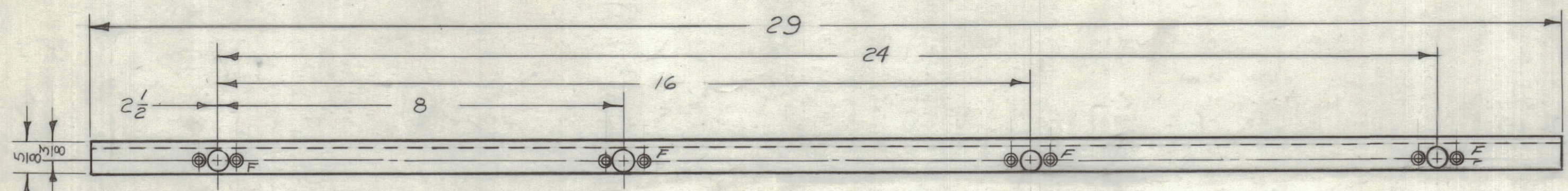
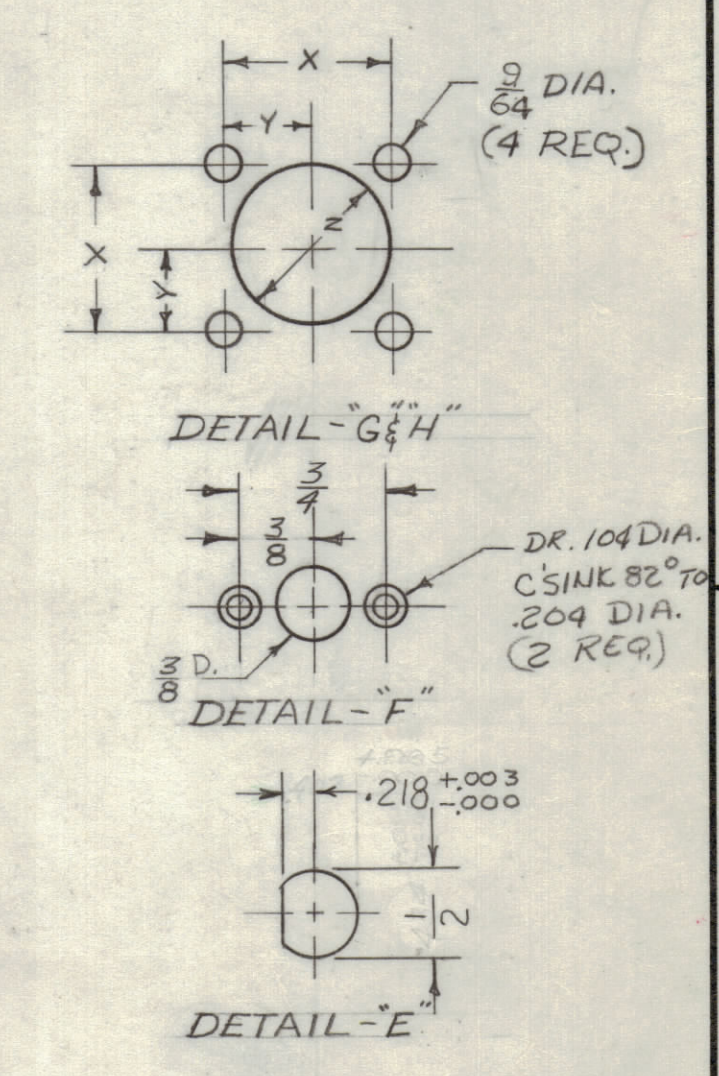
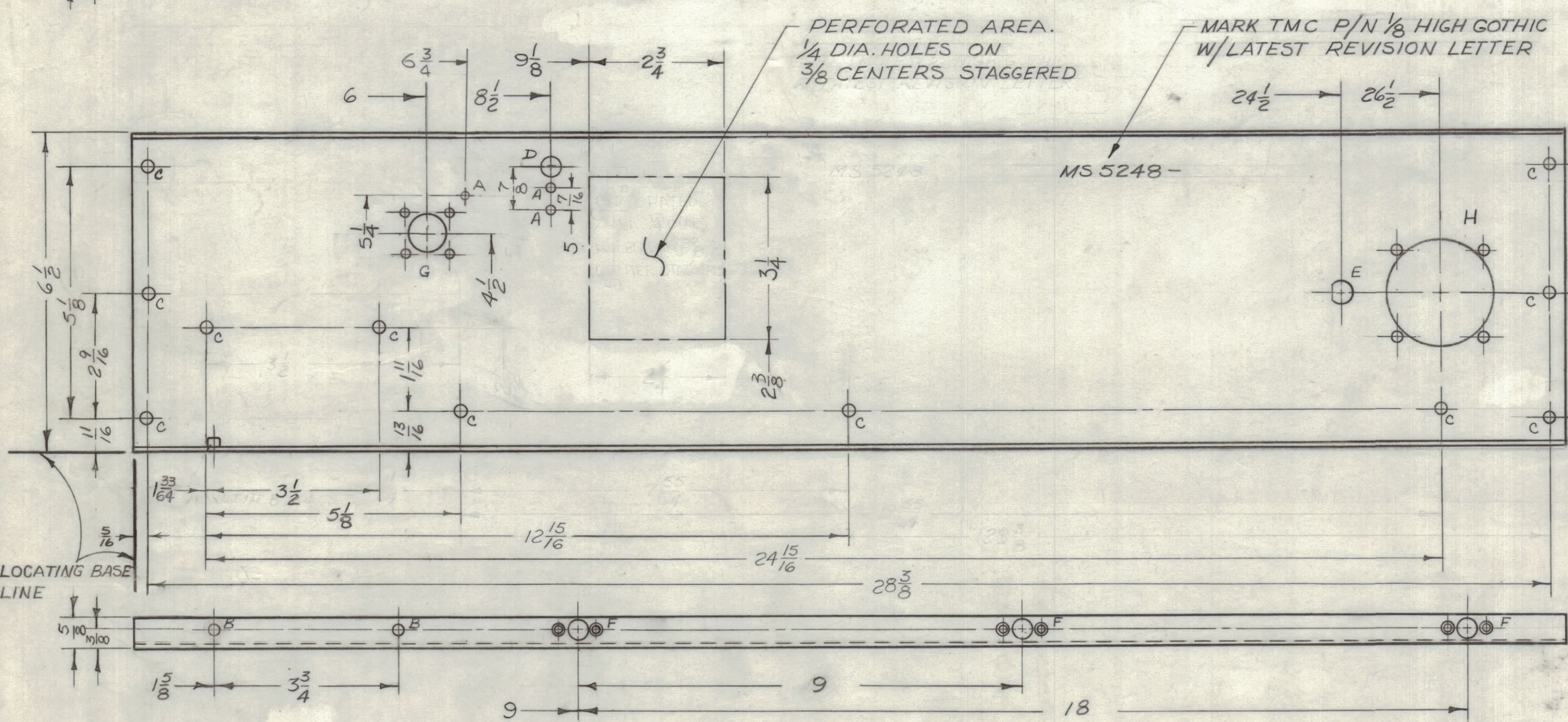


HOLE	DESCRIPTION	REQ.
A	1/64 DIA.	3
B	.191-.194 DIA.	2
C	13/64 DIA.	11
D	3/8 DIA.	1
E	SEE DETAIL	1
F	SEE DETAIL	7
G	SEE DETAIL	1
H	SEE DETAIL	1

REVISIONS						
ZONE	LTR	DESCRIPTION	DATE	E.M.N.NO	DRAFT	CHKD APPD
	X	EXPERIMENTAL RELEASE	11/17/67	+	Enl	AP
	X1	1A ADDED, E REV. 9/64 ON G&H WAS 11/64	12-13-67	+	HE	AP
	X2	PERFORATED AREA ADDED	1-18-68	+	Enl	AP
	Ø	ORIGINAL RELEASE FOR PRODUCTION	4-1-68	Ø	HE	HE



DETAIL	X	Y	Z
G	7/8	7/16	3/4 DIA.
H	1-3/4	7/8	2 1/8 DIA.



- UNLESS OTHERWISE SPECIFIED:
- USE MATERIAL THICKNESS FOR MAXIMUM RADIUS ON ALL BENDS
 - ALL ANGULAR BENDS 90 DEGREES
 - REMOVE ALL BURRS AND SHARP EDGES
 - MOUNT INSERTS AFTER FINISHING

1	BCT-10KA	AX 683
QTY / UNIT	MODEL USED ON	ASS'Y NO.
APPLICATION		
CODE	S401-451	
NOTICE TO PERSONS RECEIVING THIS DRAWING		
THE TECHNICAL MATERIEL CORPORATION claims proprietary right in the material disclosed hereon. This drawing is issued in confidence for engineering information only and may not be reproduced or used to manufacture anything shown hereon without permission from THE TECHNICAL MATERIEL CORPORATION to the user. This drawing is loaned for mutual assistance and is subject to recall at any time.		

REF: LD2281

UNLESS OTHERWISE SPECIFIED DIMENSIONS ARE IN INCHES AND INCLUDE CHEMICALLY APPLIED OR PLATED FINISHES

TOLERANCES ON

DECIMALS	FRACTIONS
.X ± .05	± 1/64
.XX ± .01	ANGLES
.XXX ± .005	± 0° -30'

MATERIAL: 081 ALUMINUM 5052-H32

FINISH: S404 YELLOW IRIDITE

2	1	NT 129-632-4	NUT, PLAIN SPLINE	B
QTY. REQ.	ITEM	PART NO.	DESCRIPTION	SYMBOL
F. BUDETTI LIST OF MATERIAL SK 3290 - MS 5024				
THE TECHNICAL MATERIEL CORP. MAMARONECK, NEW YORK				
PLATE, REAR				
SIZE	CODE IDENT. NO.	DWG NO.	ISSUE	
C	82679	MS 5248	Ø	
SCALE	1:2		SHEET	OF