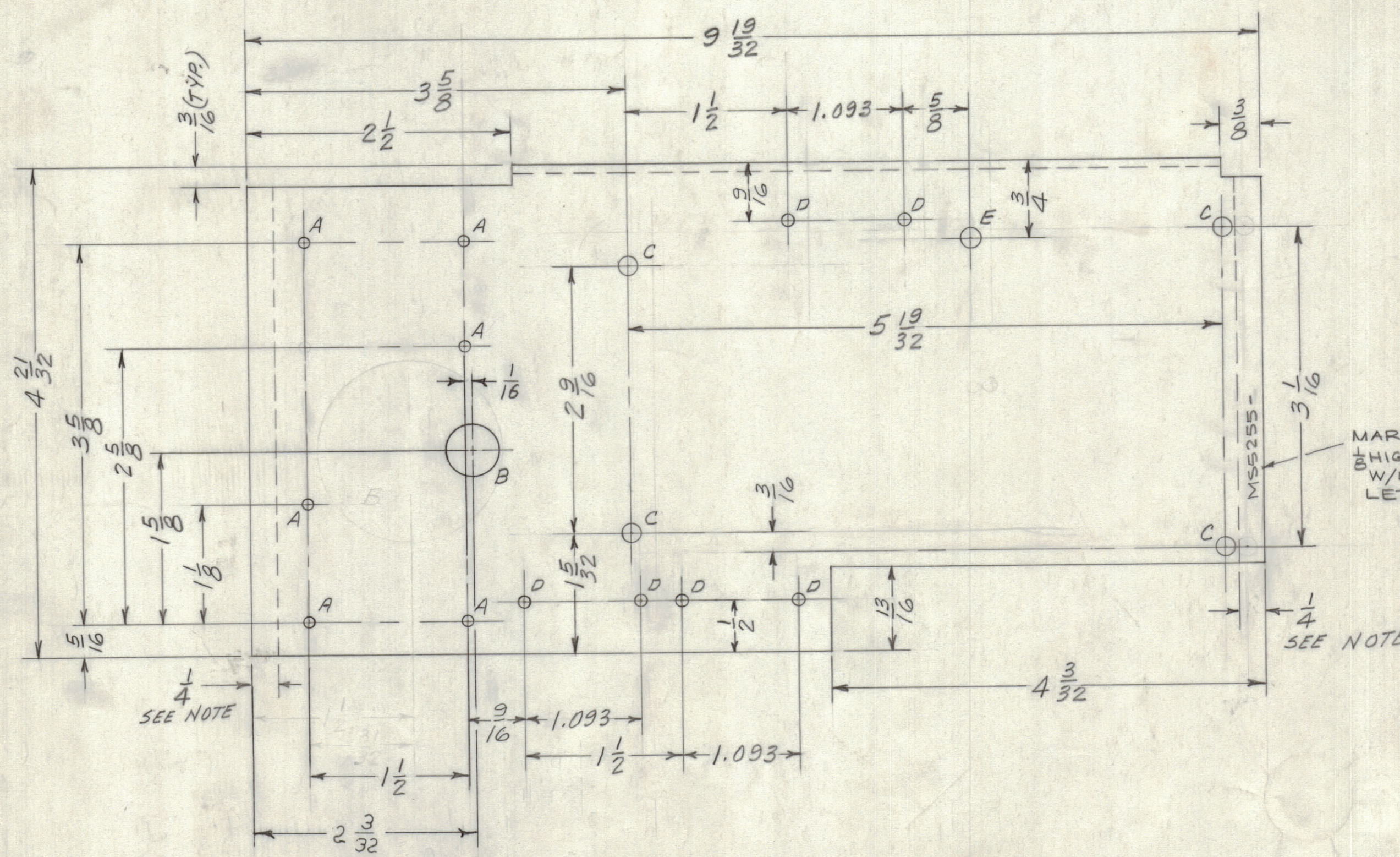


HOLE LEGEND		
HOLE	DESCRIPTION	REQ
A	1/64 DIA	6
B	1/2 DIA.	1
C	.189 DIA.	4
D	1/8 DIA	6
E	.196 DIA	1

REVISIONS							
ZONE	LTR	DESCRIPTION	DATE	E.M.N.NO	DRAFT	CHKD	APPD
	Ø	ORIGINAL RELEASE FOR PROD.	11-2-67	Ø	RG		JDa
A		CHG. POS & SIZE OF "B" HOLE	4-1-71	20299	RZ	Ø	Ø



- UNLESS OTHERWISE SPECIFIED:
1. USE MATERIAL THICKNESS FOR MAXIMUM RADIUS ON ALL BENDS
 2. ALL ANGULAR BENDS 90 DEGREES
 3. REMOVE ALL BURRS AND SHARP EDGES
 4. MOUNT INSERTS AFTER FINISHING

NOTE:
DO NOT BLACK ANODIZE
1/4 FROM EACH END
ON BOTH SIDES

- UNLESS OTHERWISE SPECIFIED:
1. USE MATERIAL THICKNESS FOR MAXIMUM RADIUS ON ALL BENDS
 2. ALL ANGULAR BENDS 90 DEGREES
 3. REMOVE ALL BURRS AND SHARP EDGES
 4. MOUNT INSERTS AFTER FINISHING

1	LFE - 1	
QTY / UNIT	MODEL USED ON	ASS'Y NO.
APPLICATION		
	CODE A	S401-451
NOTICE TO PERSONS RECEIVING THIS DRAWING		
THE TECHNICAL MATERIEL CORPORATION claims proprietary right in the material disclosed hereon. This drawing is issued in confidence for engineering information only and may not be reproduced or used to manufacture anything shown hereon without permission from THE TECHNICAL MATERIEL CORPORATION to the user. This drawing is loaned for mutual assistance and is subject to recall at any time.		

UNLESS OTHERWISE SPECIFIED DIMENSIONS ARE IN INCHES AND INCLUDE CHEMICALLY APPLIED OR PLATED FINISHES	
TOLERANCES ON	
DECIMALS .X ± .05 .XX ± .01 .XXX ± .005	FRACTIONS ± 1/64 ANGLES ± 0° -30'
MATERIAL .091 THK. ALUM. 5052-H32	
FINISH 5120 BLACK ANODIZE SEE NOTE	

4	1	TE164-7	NUT, PLN, CLINCH	C
QTY. REQ.	ITEM	PART NO.	DESCRIPTION	SYMBOL
	Ø POSE		LIST OF MATERIAL SK3286 MS 3	
FINAL APPROVAL		DATE	THE TECHNICAL MATERIEL CORP.	
MECH. DES.		DATE	MAMARONECK, NEW YORK	
ELECT. DES.		DATE	HEAT SINK & P.C CARD HOLDER	
CHECKED		DATE	SIZE CODE IDENT.NO. DWG NO.	
DRAWN		DATE	C 82679 MS5255 3/1	
MATERIAL .091 THK. ALUM. 5052-H32			ISSUE	
FINISH 5120 BLACK ANODIZE			A	
SEE NOTE			SCALE 1/1	
			SHEET 1 OF 1	