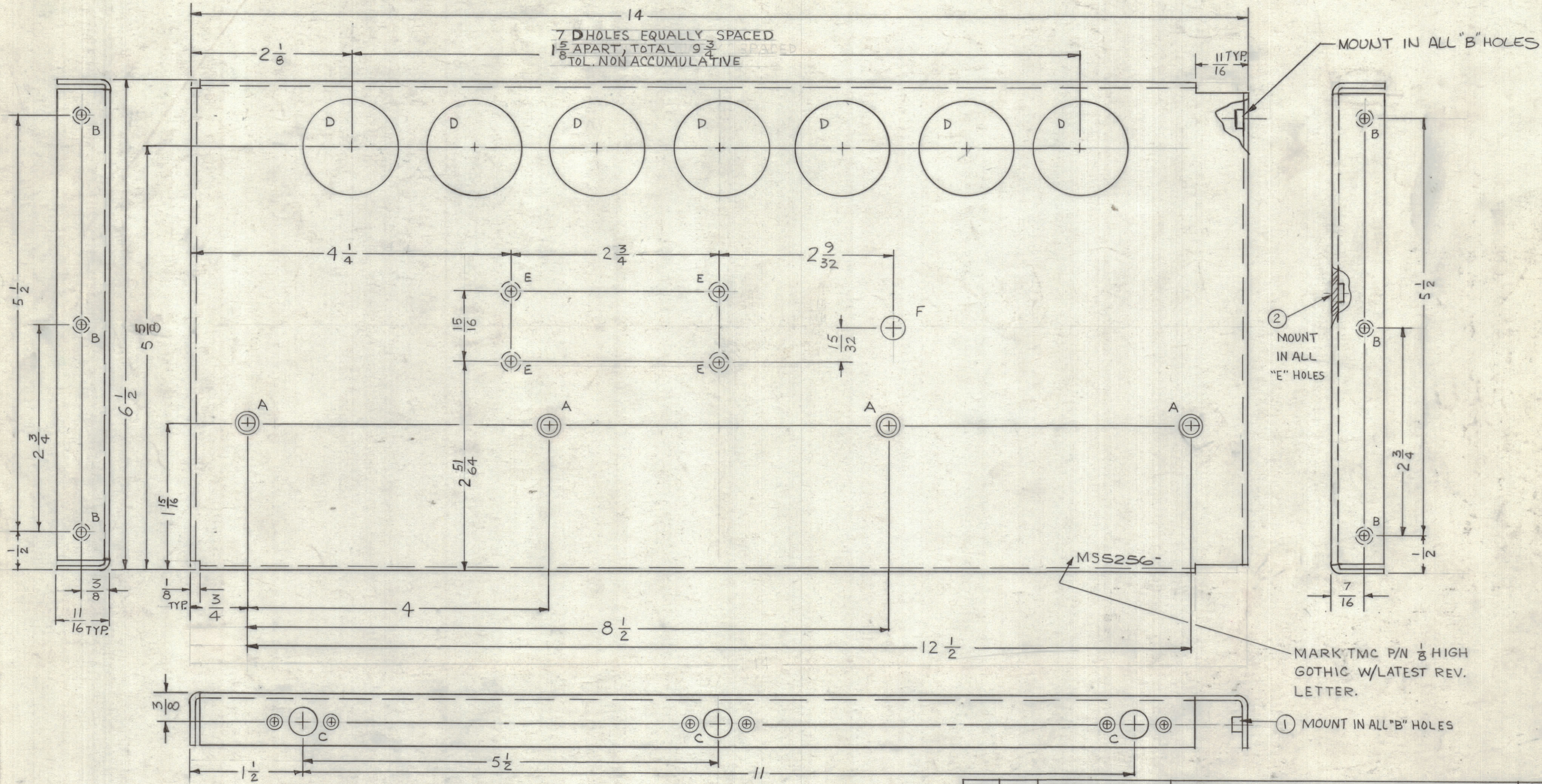
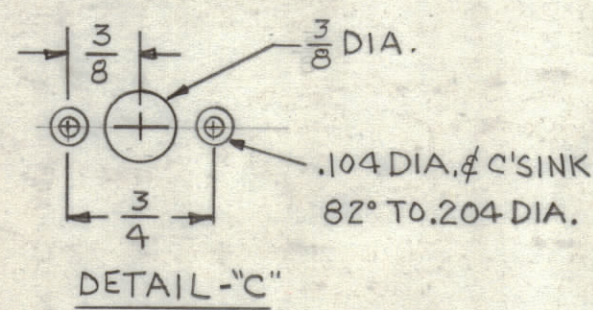


MS5256-1	AS SHOWN	RIGHT SIDE
MS 5256-2	DELETE "D" HOLES	LEFT SIDE

REVISIONS						
ZONE	LTR	DESCRIPTION	DATE	E.M.N.NO	DRAFT	CHKD APPD
	X	EXP. RELEASE	10.23.67		HE	
	X1	ADDED "F" HOLE	11.1.68		HE	
	Ø	ORIGINAL RELEASE FOR PRODUCTION	12-6-68		RG	



HOLE	DESCRIPTION	REQ
A	DR. 169 DIA C'SINK 82° TO .337 DIA	4
B	.221-.224 DIA.	6
C	SEE DETAIL	6
D	1-1/4 DIA.	7
E	.250-.253 DIA.	4
F	5/16 DIA.	1



OPPOSITE SIDE SAME

IEA	RTPH-3	
QTY / UNIT	MODEL USED ON	ASS'Y NO.
APPLICATION		
CODE	S 401-451	
A		

NOTICE TO PERSONS RECEIVING THIS DRAWING  
 THE TECHNICAL MATERIEL CORPORATION claims proprietary right in the material disclosed hereon. This drawing is issued in confidence for engineering information only and may not be reproduced or used to manufacture anything shown hereon without permission from THE TECHNICAL MATERIEL CORPORATION to the user. This drawing is loaned for mutual assistance and is subject to recall at any time.

UNLESS OTHERWISE SPECIFIED DIMENSIONS ARE IN INCHES AND INCLUDE CHEMICALLY APPLIED OR PLATED FINISHES

TOLERANCES ON	
DECIMALS	FRACTIONS
.X ± .05	± 1/64
.XX ± .01	ANGLES
.XXX ± .005	± 0° -30'

MATERIAL Ø81, THK. ALUM. 5052-H32  
 FINISH S404 YEL. IRIDITE

QTY. REQ.	ITEM	PART NO.	DESCRIPTION	SYMBOL
4	2	NT129-1032-4	NUT, PLAIN SPLINE	E
6	1	NT129-832-4	NUT, PLAIN SPLINE	B

F. EATON LIST OF MATERIAL SK 3253-001-6

FINAL APPROVAL	DATE
<i>S. D. Marcano</i>	12/4/68
MECH. DES.	DATE
ELECT. DES.	DATE
CHECKED	DATE
SG	10-23-67
DRAWN	DATE
H.R.	10.23.67

THE TECHNICAL MATERIEL CORP.  
 MAMARONECK, NEW YORK

PLATE, SIDE-RIGHT & LEFT

SIZE	CODE IDENT. NO.	DWG NO.	ISSUE
C	82679	MS 5256	Ø
SCALE	1:1	SHEET	OF

- UNLESS OTHERWISE SPECIFIED:
1. USE MATERIAL THICKNESS FOR MAXIMUM RADIUS ON ALL BENDS
  2. ALL ANGULAR BENDS 90 DEGREES
  3. REMOVE ALL BURRS AND SHARP EDGES
  4. MOUNT INSERTS AFTER FINISHING