

4

3

2

1

3-C C DIM CHG 2²⁵ WAS 2^{5/64} 5-19-68 10483 GE YD GP

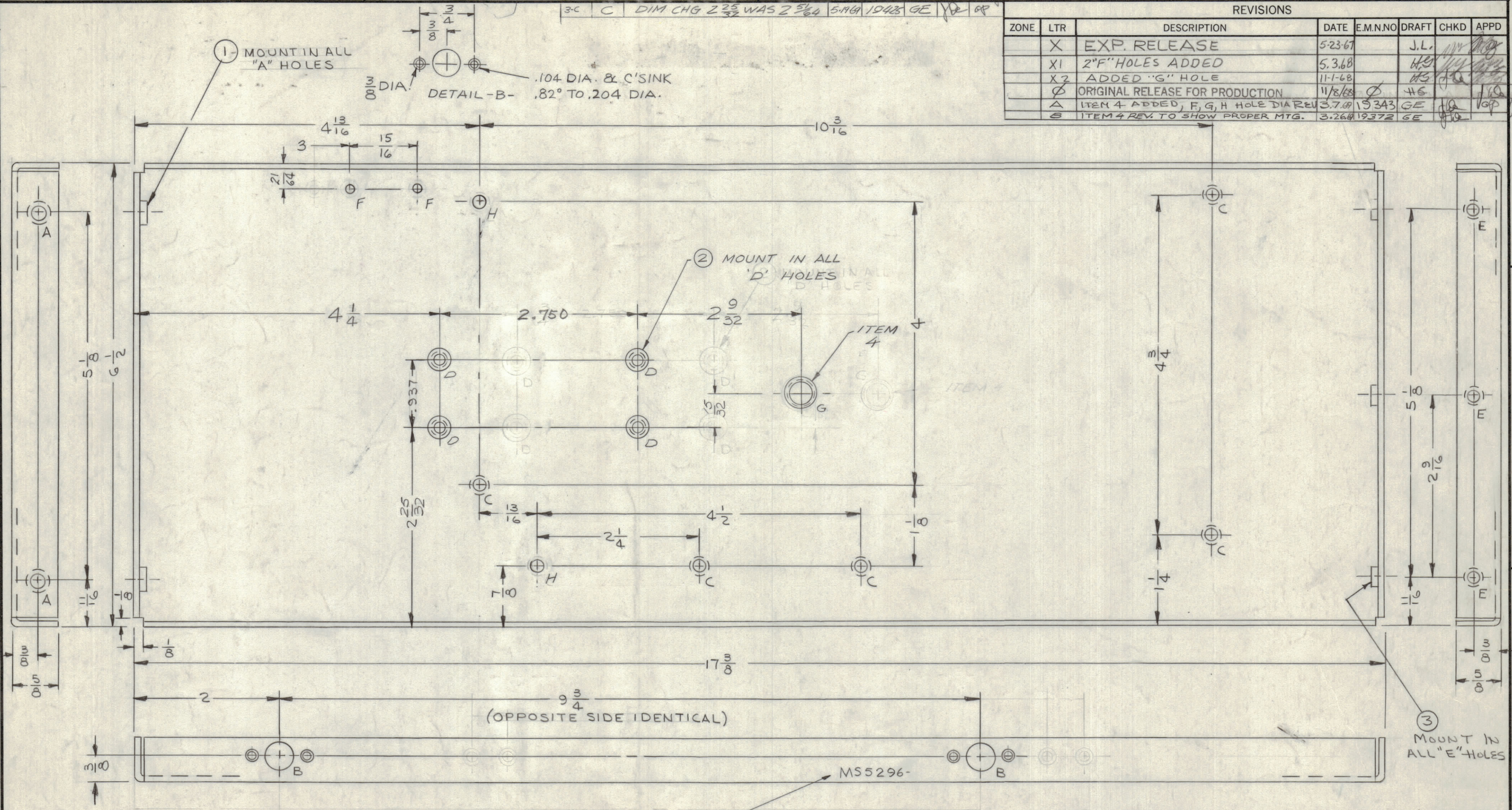
ZONE	LTR	DESCRIPTION	DATE	E.M.N.NO	DRAFT	CHKD	APPD
	X	EXP. RELEASE	5-23-67		J.L.		
	X1	2"F HOLES ADDED	5-3-68		H.S.		
	X2	ADDED "G" HOLE	11-1-68		H.S.		
	Ø	ORIGINAL RELEASE FOR PRODUCTION	11/8/68		H.S.		
	A	ITEM 4 ADDED, F, G, H HOLE DIA REV	3-7-69	19343	GE		J.P.
	B	ITEM 4 REV. TO SHOW PROPER MTG.	3-26-69	19372	GE		J.P.

D

C

B

A



HOLE	DESCRIPTION	REQ.
A	.221-.224 DIA	2
B	SEE DETAIL	4
C	.144 DIA & C'SINK 82° TO .284 DIA (SIDE)	5
D	.250-.253 DIA	4
E	.191-.194 DIA	3
F	9/64 D.	2
G	.413-.416 DIA	1
H	1/16 DIA.	2

UNLESS OTHERWISE SPECIFIED:
 1. USE MATERIAL THICKNESS FOR MAXIMUM RADIUS ON ALL BENDS.
 2. ALL ANGULAR BENDS 90 DEGREES.
 3. REMOVE ALL BURRS & SHARP EDGES.
 4. MOUNT INSERTS AFTER FINISHING.

MARK TMC P/N 1/8 HIGH GOTHIC W/LATEST REV. LETTER

QTY / UNIT	MODEL USED ON	ASS'Y NO.
1	HFRR-4	
APPLICATION		
	CODE A	S401-451

NOTICE TO PERSONS RECEIVING THIS DRAWING
 THE TECHNICAL MATERIEL CORPORATION claims proprietary right in the material disclosed hereon. This drawing is issued in confidence for engineering information only and may not be reproduced or used to manufacture anything shown hereon without permission from THE TECHNICAL MATERIEL CORPORATION to the user. This drawing is loaned for mutual assistance and is subject to recall at any time.

QTY. REQ.	ITEM	PART NO.	DESCRIPTION	SYMBOL
1	4	NT129-524-4	NUT PLAIN SPLINE	G
3	3	NT129-632-4	NUT, PLAIN, SPLINE	E
4	2	NT129-1032-4	NUT, PLAIN, SPLINE	D
2	1	NT129-832-4	NUT, PLAIN, SPLINE	A

HOGAN (ZETENA) LIST OF MATERIAL SK3252-003-11

FINAL APPROVAL	DATE	THE TECHNICAL MATERIEL CORP. MAMARONECK, NEW YORK PLATE, SIDE-LEFT
MECH. DES.	DATE	
ELECT. DES.	DATE	
CHECKED	DATE	
DRAWN	DATE	SIZE CODE IDENT. NO. DWG NO. ISSUE C 82679 MS5296-11 C
SCALE 1/1		SHEET OF

4

3

2

1

MS5296 C B

A

MS5296