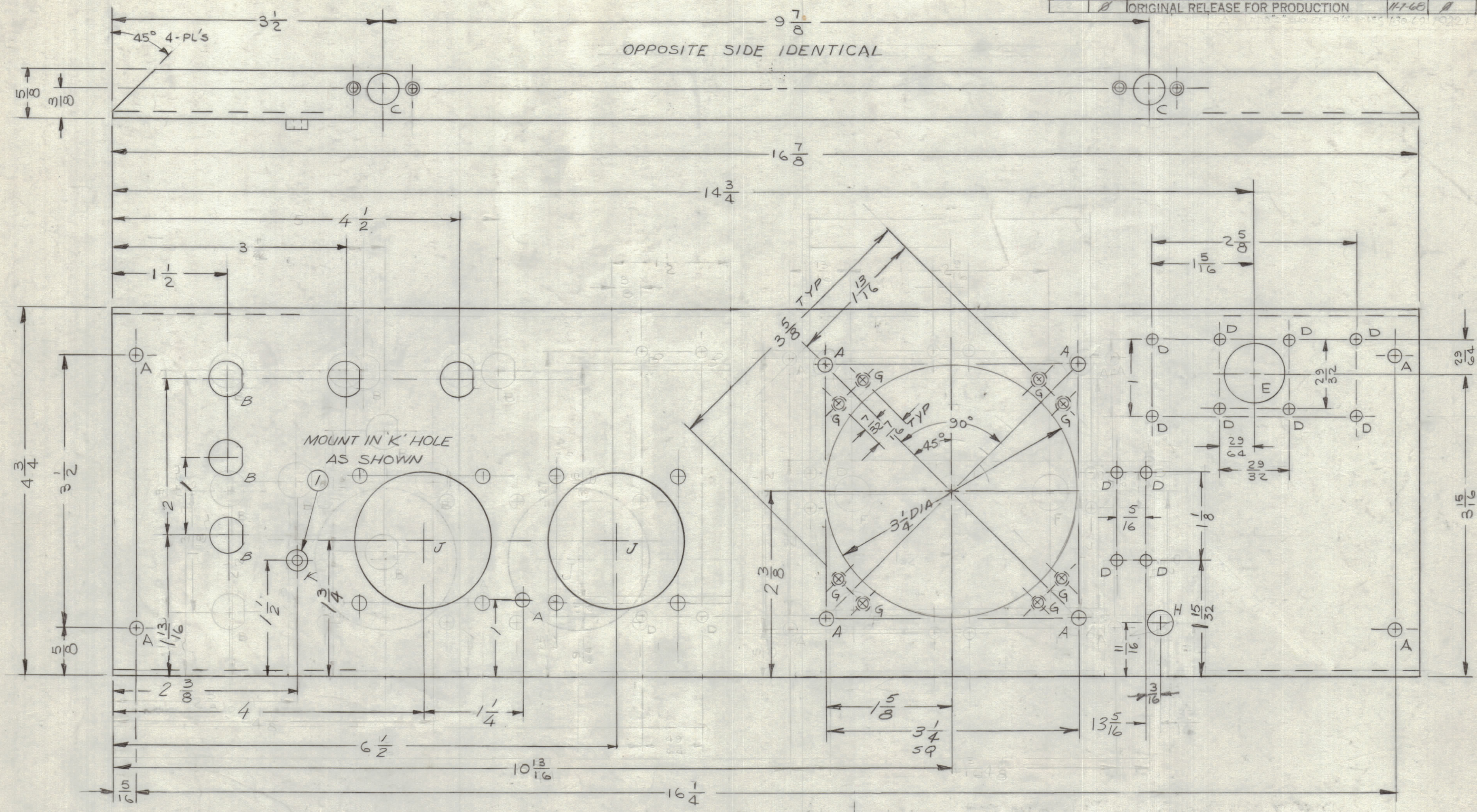
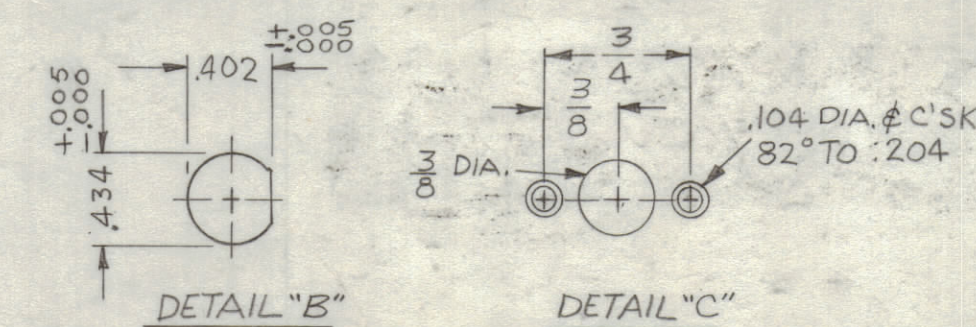


REVISIONS						
ZONE	LTR	DESCRIPTION	DATE	E.M.N.NO	DRAFT	CHKD APPD
A		ADD 2 "J" HOLES & 9 "A" HOLES	1/30/68	19221	GE	[Signature]
B		ADD "K" HOLE & REVISED	5/14/68	19428	GE	[Signature]

REVISIONS						
ZONE	LTR	DESCRIPTION	DATE	E.M.N.NO	DRAFT	CHKD APPD
X1		DELETED (7) "F" HOLES; ADDED "G" HOLE.	4/13/68		JL	
X2		ADDED 4 "D" HOLES & 1 "H" HOLE	8/20/68		[Signature]	[Signature]
Ø		ORIGINAL RELEASE FOR PRODUCTION	11/6/68		R.G.	[Signature]



HOLE	DESCRIPTION	REQ.
A	11/64 DIA	6
B	SEE DETAIL	5
C	SEE DETAIL	4
D	9/64 DIA	16
E	13/16 DIA.	1
F	DELETED	
G	1/20 DIA & C'SK 82° TO .204 (FAR SIDE)	8
H	5/16 DIA.	1
J	SEE DETAIL	2
K	.250 - .253 DIA.	1



QTY / UNIT	MODEL USED ON	ASS'Y NO.
1	HFSR-4	
APPLICATION		
CODE		

NOTICE TO PERSONS RECEIVING THIS DRAWING
THE TECHNICAL MATERIEL CORPORATION claims proprietary right in the material disclosed hereon. This drawing is issued in confidence for engineering information only and may not be reproduced or used to manufacture anything shown hereon without permission from THE TECHNICAL MATERIEL CORPORATION to the user. This drawing is loaned for mutual assistance and is subject to recall at any time.

UNLESS OTHERWISE SPECIFIED DIMENSIONS ARE IN INCHES AND INCLUDE CHEMICALLY APPLIED OR PLATED FINISHES

TOLERANCES ON

DECIMALS	FRACTIONS
.X ± .05	± 1/64
.XX ± .01	ANGLES
.XXX ± .005	± 0° - 30'

MATERIAL
.081 THK ALUMINUM
5052-H32

FINISH
YELLOW IRIDITE
S404

QTY. REQ.	ITEM	PART NO.	DESCRIPTION	SYMBOL
1	NT129-1032-4		NUT, PLAIN, SPLINE	
	LD 2302		LIST OF MATERIAL	SK3252-004-8
THE TECHNICAL MATERIEL CORP. MAMARONECK, NEW YORK				
PLATE, REAR				
<p>FINAL APPROVAL: [Signature] DATE: 11/7/68</p> <p>MECH. DES.: M ZETENA DATE: 11/</p> <p>ELECT. DES.: DATE: _____</p>			<p>CHECKED: [Signature] DATE: 10/30/68</p> <p>DRAWN: J.L. DATE: 9/14/67</p>	
SIZE	CODE IDENT. NO.	DWG NO.	ISSUE	
C	82679	MS 5355	B	
SCALE			SHEET	OF