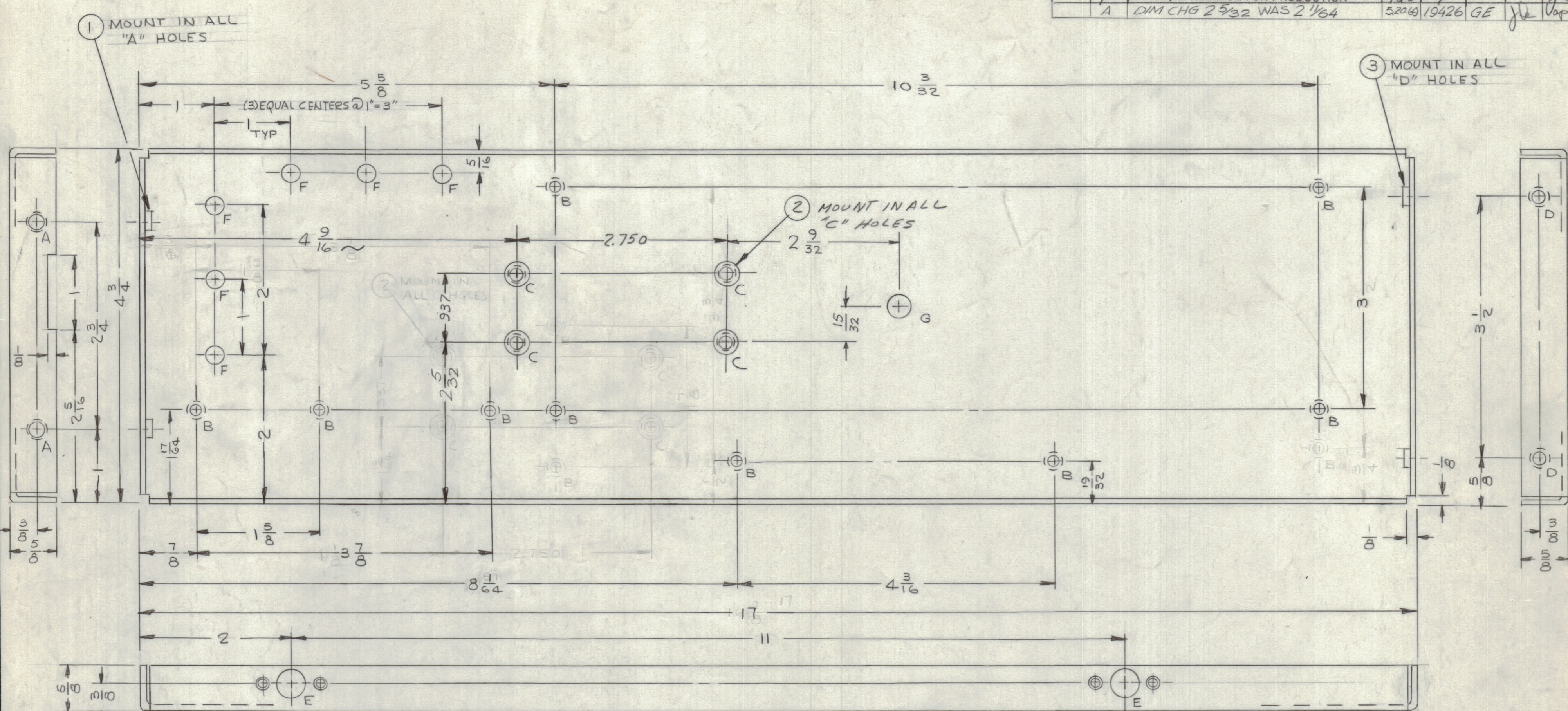


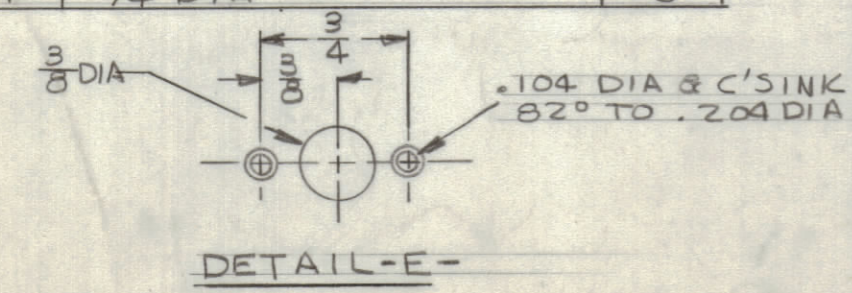
REVISIONS							
ZONE	LTR	DESCRIPTION	DATE	E.M.N.NO	DRAFT	CHKD	APPD
	X1	ADDED "F" HOLES	9/16/68		JL		
	X2	ADDED "G" HOLE	11-7-68		HS	FL	
	Ø	ORIGINAL RELEASE FOR PRODUCTION	11/8/68				
	A	DIM CHG 2 5/32 WAS 2 1/64	5.20.69	19426	GE	JL	Cap



(OPPOSITE SIDE IDENTICAL)

HOLE	DESCRIPTION	REQ.
A	.221-.224 DIA	2
B	.144 DIA & C'SINK 82° TO .284 DIA	9
C	.250-.253 DIA	4
D	.191-.194 DIA	2
E	SEE DETAIL	4
F	1/4 DIA	6

HOLE	DESCRIPTION	REQ.
G	5/16 DIA.	1



QTY / UNIT	MODEL USED ON	ASS'Y NO.
1	HFSR-4	

NOTICE TO PERSONS RECEIVING THIS DRAWING
 THE TECHNICAL MATERIEL CORPORATION claims proprietary right in the material disclosed hereon. This drawing is issued in confidence for engineering information only and may not be reproduced or used to manufacture anything shown hereon without permission from THE TECHNICAL MATERIEL CORPORATION to the user. This drawing is loaned for mutual assistance and is subject to recall at any time.

TOLERANCES ON	
DECIMALS	FRACTIONS
.X ± .05	± 1/64
.XX ± .01	ANGLES
.XXX ± .005	± 0°-30'

MATERIAL
 .081 THK ALUMINUM
 5052-H32
 FINISH
 YELLOW TRIDITE
 5404

QTY. REQ.	ITEM	PART NO.	DESCRIPTION	SYMBOL
2	3	NT129-632-4	NUT, PLAIN, SPLINE	D
4	2	NT129-1032-4	NUT, PLAIN, SPLINE	C
2	1	NT129-832-4	NUT, PLAIN, SPLINE	A

LIST OF MATERIAL SK 3252-004-7

FINAL APPROVAL	DATE
<i>SJM</i>	11.8.68
MECH. DES.	DATE
<i>HS</i>	11/8/68
ELECT. DES.	DATE
CHECKED	DATE
<i>JL</i>	11/1/68
DRAWN	DATE
JL	9/13/67

THE TECHNICAL MATERIEL CORP.
 MAMARONECK, NEW YORK

PLATE, SIDE-LEFT

SIZE	CODE IDENT. NO.	DWG NO.	ISSUE
C	82679	MS 5358	A

SCALE SHEET OF