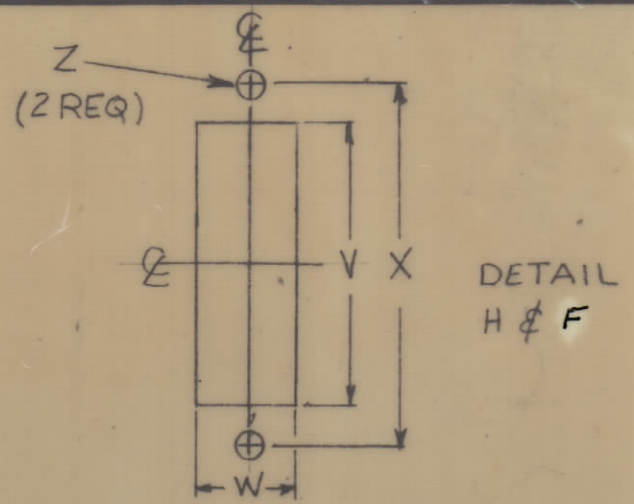
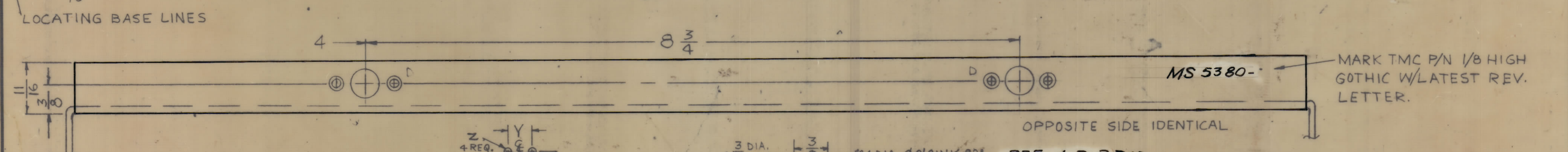
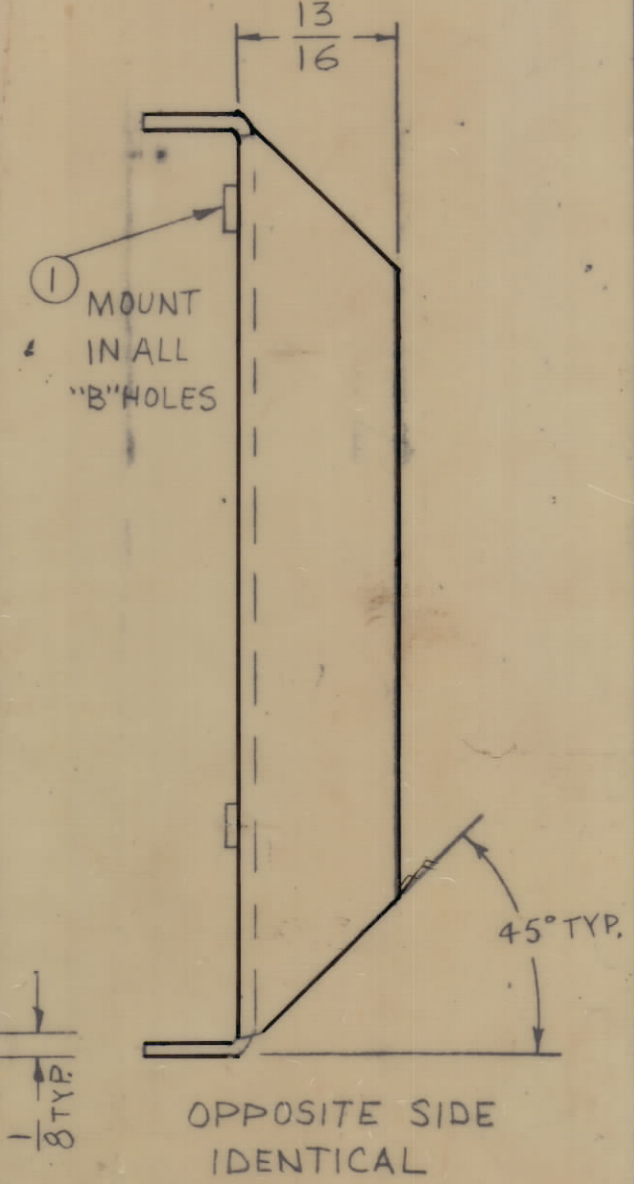
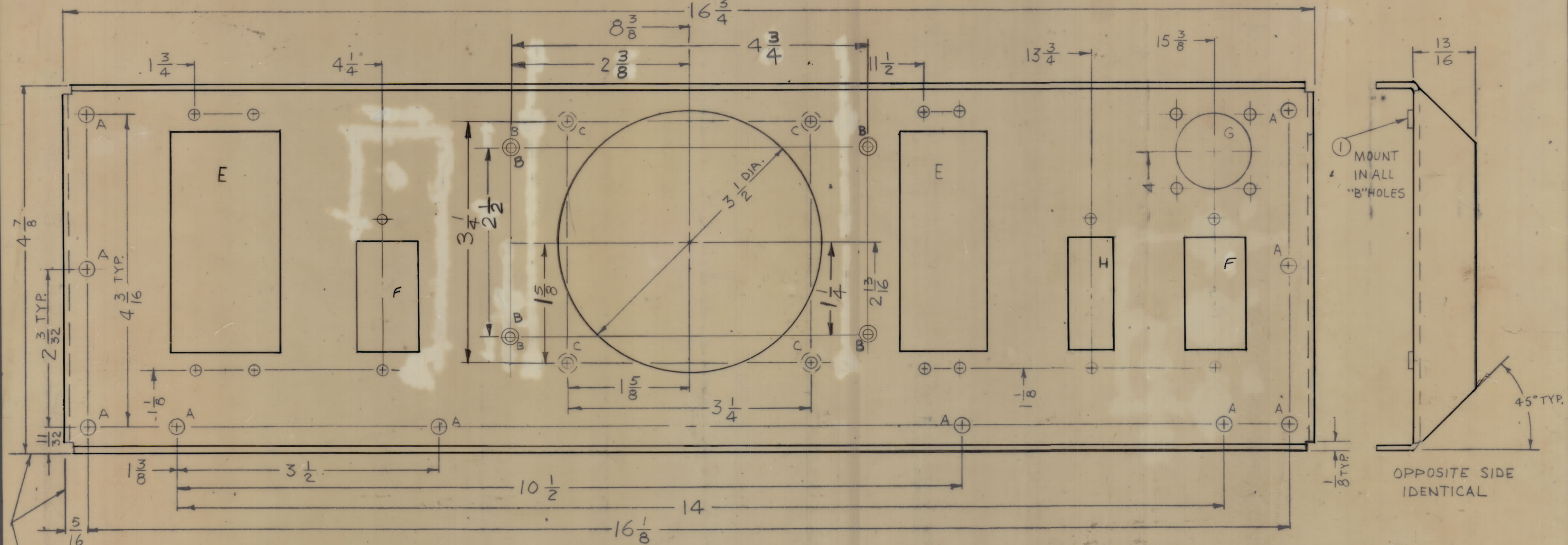


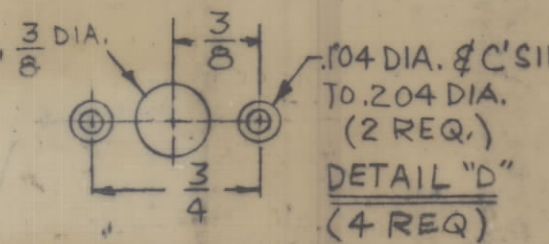
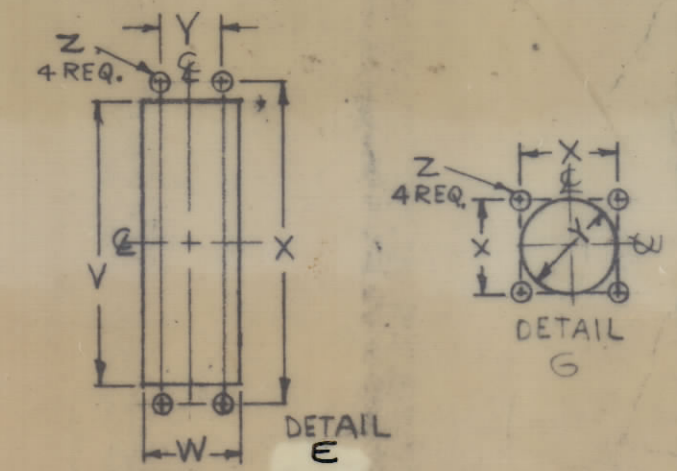
HOLE	DESCRIPTION	REQ'D.
A	13/64 DIA.	10
B	.161-.164 DIA.	4
C	.144 DIA. & C'SINK 82° TO .284 DIA.	4
D	SEE DETAIL	4
E		2
F		2
G		1
H		1



REVISIONS						
ZONE	LTR	DESCRIPTION	DATE	E.M.N.NO	DRAFT	CHKD APPD
	X	EXP. RELEASE	2/27/68	H	long	
		ORIGINAL RELEASE FOR PRODUCTION	3/28/69		RG	



DETAIL	V	W	X	Y	Z
E	2-63/64	1-9/64	3-27/64	15/32	9/64
F	1-37/64	53/64	2-1/64	—	9/64
G	—	—	31/32	1	9/64
H	1-37/64	41/64	2-1/64	—	9/64



QTY. REQ.	ITEM	PART NO.	DESCRIPTION	SYMBOL
4	1	NT129-440-4	NUT, PLAIN, SPLINE	B

FINAL APPROVAL	DATE
<i>[Signature]</i>	3/27/69
MECH. DES.	DATE
<i>[Signature]</i>	3-27-69
ELECT. DES.	DATE
CHECKED	DATE
<i>[Signature]</i>	3-27-69
DRAWN	DATE
<i>[Signature]</i>	2-29-68

THE TECHNICAL MATERIEL CORP.
MAMARONECK, NEW YORK

PLATE, REAR

- UNLESS OTHERWISE SPECIFIED:
- USE MATERIAL THICKNESS FOR MAXIMUM RADIUS ON ALL BENDS
 - ALL ANGULAR BENDS 90 DEGREES
 - REMOVE ALL BURRS AND SHARP EDGES
 - MOUNT INSERTS AFTER FINISHING

QTY / UNIT	MODEL USED ON	ASS'Y NO.
1	RTTD-5, 5A	
APPLICATION		
CODE	3401-451	
A		

NOTICE TO PERSONS RECEIVING THIS DRAWING
THE TECHNICAL MATERIEL CORPORATION claims proprietary right in the material disclosed herein. This drawing is issued in confidence for engineering information only and may not be reproduced or used to manufacture anything shown herein without permission from THE TECHNICAL MATERIEL CORPORATION to the user. This drawing is loaned for mutual assistance and is subject to recall at any time.

UNLESS OTHERWISE SPECIFIED DIMENSIONS ARE IN INCHES AND INCLUDE CHEMICALLY APPLIED OR PLATED FINISHES

TOLERANCES ON

DECIMALS	FRACTIONS
.X ± .05	± 1/64
.XX ± .01	ANGLES
.XXX ± .005	± 0°-30'

MATERIAL .081 THK. ALUM
5052-H32
FINISH 3404 YEL
IRIDITE

SIZE	CODE IDENT.NO.	DWG NO.	ISSUE
C	82679	MS 5380	

SCALE 1:1 SHEET OF