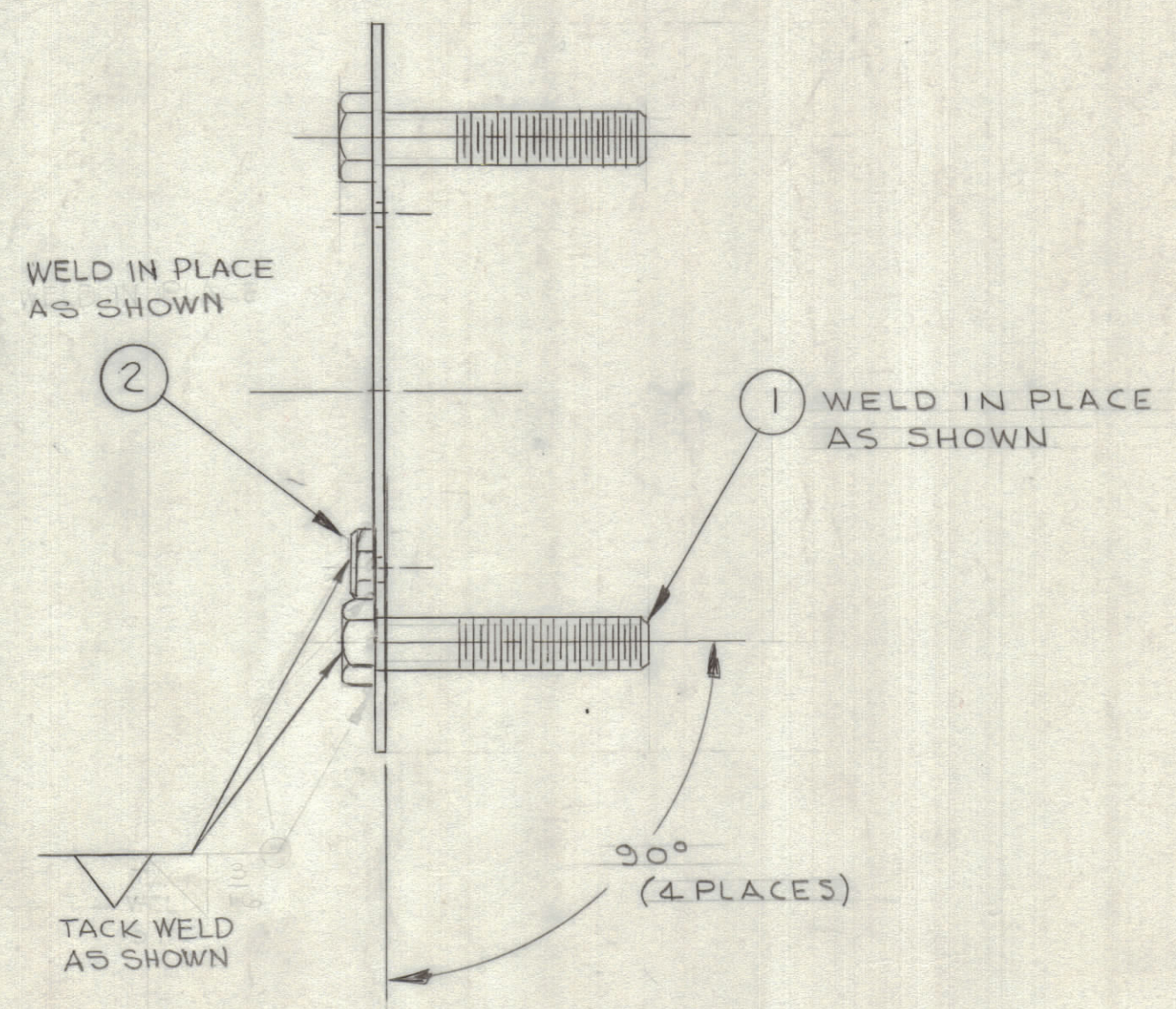
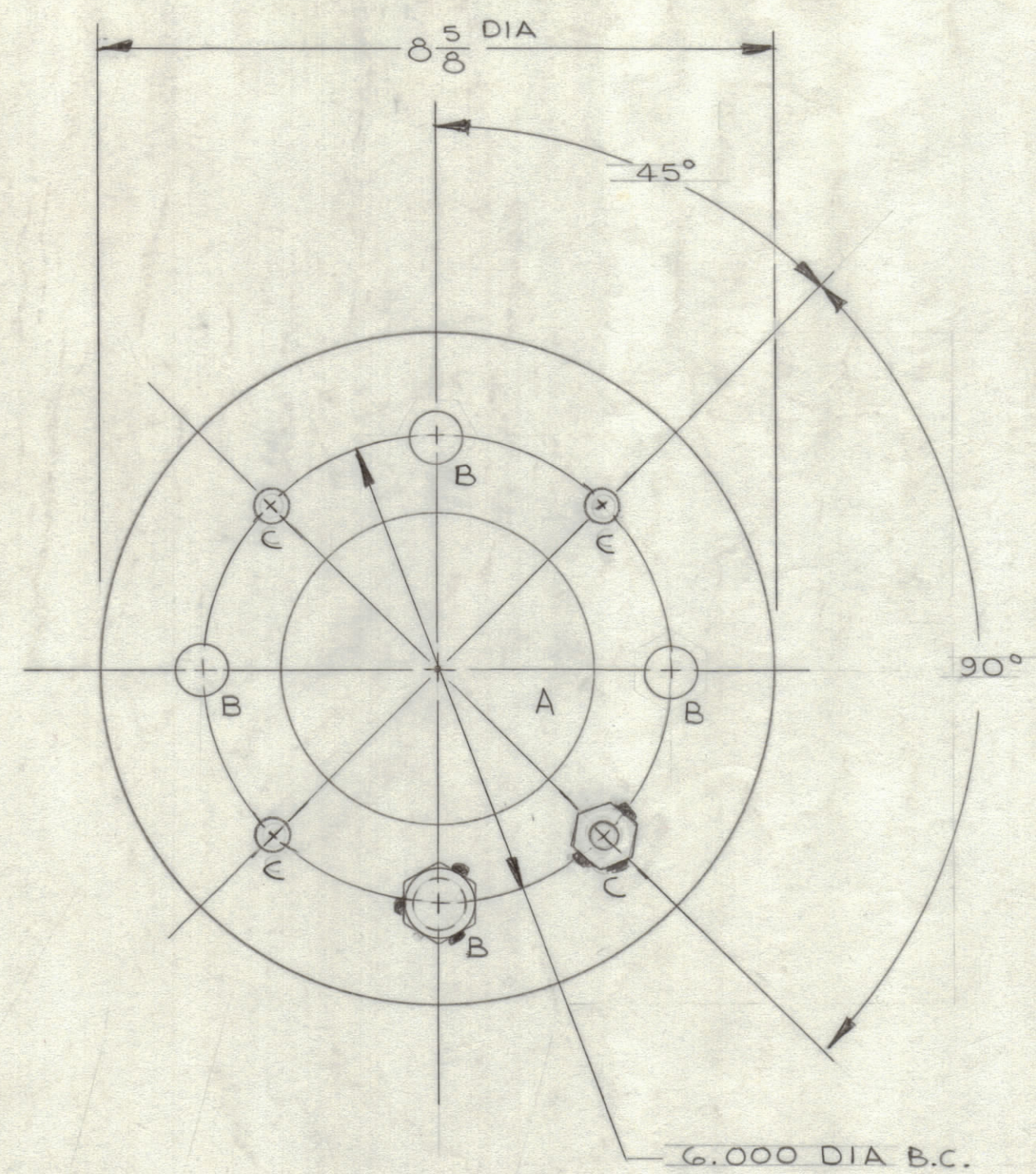


REVISIONS						
ZONE	LTR	DESCRIPTION	DATE	E.M.N.NO	DRAFT	CHKD APPD
	X1	"C" HOLES WERE 7/32; ADDED IT.-Z	6/19/68		JL	
	Ø	ORIG. RELEASE FOR PROD.	11/1/68		P.G.	



HOLE LEGEND		
HOLE	DESCRIPTION	REQ
A	4.00 DIA	1
B	2 1/32 DIA	4
C	.250 ±.004 DIA	4

FINISH NOTE :
 ZINC PLATE .2 TO 1.0 MIL
 CHROMATED DIP .15 MIL MINIMUM
 AS PER QQ-2-325. PLATE 2 TO 40 MIL
 CHROMATED DIP .15 MIL MINIMUM
 AS PER QQ-2-325

1	AWTA-1	A4746
QTY / UNIT	MODEL USED ON	ASS'Y NO.
APPLICATION		
CODE		

NOTICE TO PERSONS RECEIVING THIS DRAWING
 THE TECHNICAL MATERIEL CORPORATION claims proprietary right in the material disclosed hereon. This drawing is issued in confidence for engineering information only and may not be reproduced or used to manufacture anything shown hereon without permission from THE TECHNICAL MATERIEL CORPORATION to the user. This drawing is loaned for mutual assistance and is subject to recall at any time.

UNLESS OTHERWISE SPECIFIED
 DIMENSIONS ARE IN INCHES
 AND INCLUDE CHEMICALLY APPLIED
 OR PLATED FINISHES

TOLERANCES ON

DECIMALS	FRACTIONS
.X ± .05	± 1/64
.XX ± .01	ANGLES
.XXX ± .005	± 0° -30'

MATERIAL CRS #13(.089) GA

FINISH ZINC PLATE .2 TO 1.0 MIL
 CHROMATED DIP .15 MIL MINIMUM
 AS PER QQ-2-325

QTY. REQ.	ITEM	PART NO.	DESCRIPTION	SYMBOL
4	2	NTH1024SR12	NUT HEX	
4	1	SCHH6211SR52	BOLT, MACHINE, HEX, HEAD	

LIST OF MATERIAL SK3291-000-B

FINAL APPROVAL	DATE	THE TECHNICAL MATERIEL CORP. MAMARONECK, NEW YORK
MECH. DES.	DATE	
ELECT. DES.	DATE	
CHECKED	DATE	MTG PLATE - ANTENNA
DRAWN	DATE	

SIZE	CODE IDENT.NO.	DWG NO.	ISSUE
C	82679	SK MS 5410-8	Ø
SCALE	1/2	SHEET	OF