

4

3

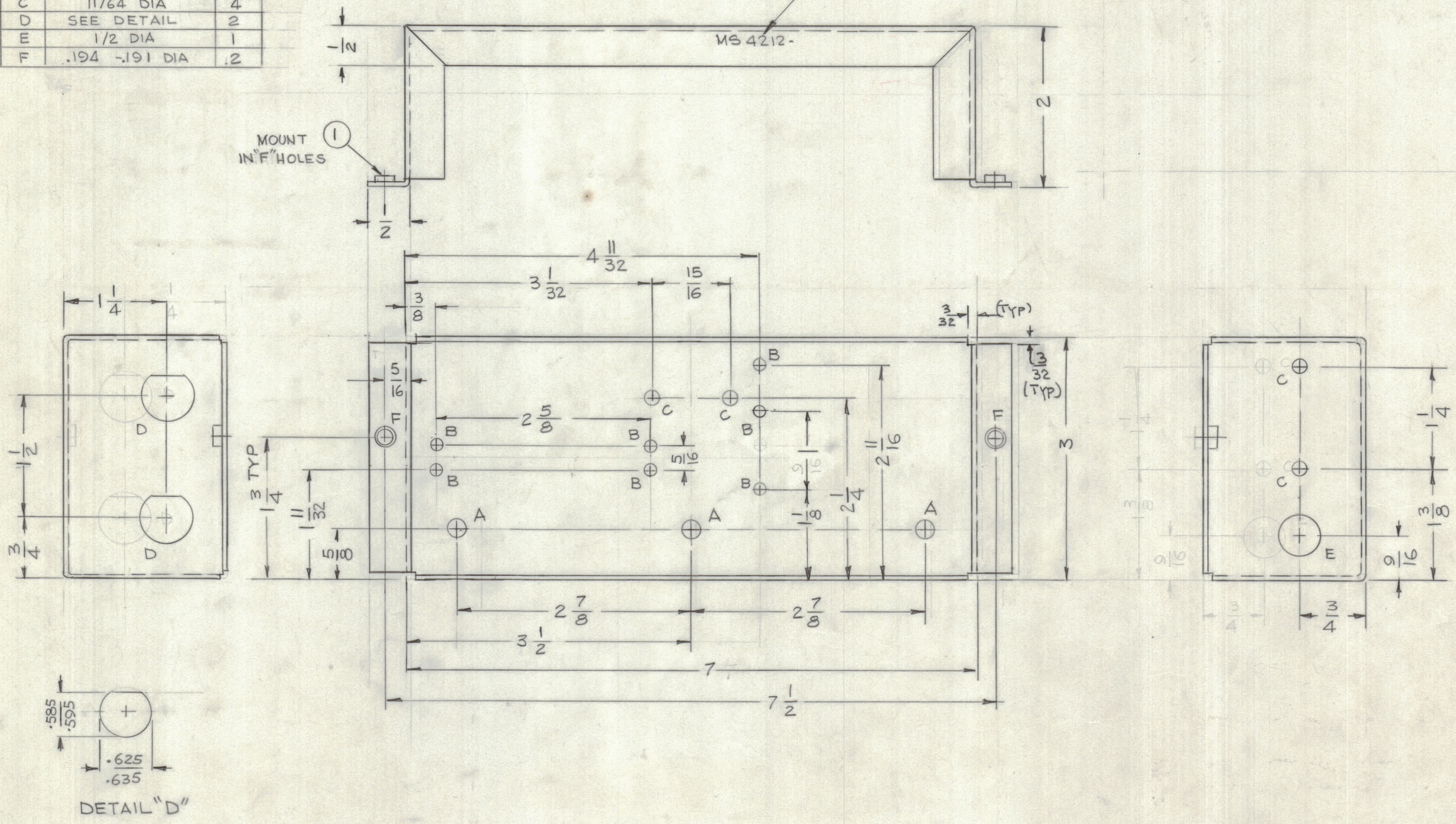
2

1

REVISIONS							
ZONE	LTR	DESCRIPTION	DATE	E.M.N.NO	DRAFT	CHKD	APPD
	X	EXP. RELEASE	9-10-68		GDL		12
	Ø	ORIGINAL RELEASE FOR PROD.	9-16-68		R.G.		Ø

HOLE	DESCRIPTION	REQ
A	7/32 DIA	3
B	9/64 DIA	7
C	11/64 DIA	4
D	SEE DETAIL	2
E	1/2 DIA	1
F	.194 -.191 DIA	.2

MARK TMC PART NUMBER
1/8 HIGH GOTHIC WITH LATEST



- UNLESS OTHERWISE SPECIFIED:
1. USE MATERIAL THICKNESS FOR MAXIMUM RADIUS ON ALL BENDS.
 2. ALL ANGULAR BENDS 90 DEGREES.
 3. REMOVE ALL BURRS AND SHARP EDGES.
 4. MOUNT INSERTS AFTER FINISHING.

REF: LD 2330

QTY. REQ.	ITEM	PART NO.	DESCRIPTION	SYMBOL
2	1	NT129-632-4	NUT, PLAIN SPLINE	
LIST OF MATERIAL SK 3291-10				
<p>FINAL APPROVAL: <i>[Signature]</i> DATE: 9-16-68</p> <p>MECH. DES. DATE: 9-16-68</p> <p>ELECT. DES. DATE: 9-16-68</p> <p>CHECKED: <i>[Signature]</i> DATE: 9-16-68</p> <p>DRAWN: G.D.L. DATE: 9-10-68</p>				
<p>THE TECHNICAL MATERIEL CORP. MAMARONECK, NEW YORK</p> <p>CHASSIS, POWER SUPPLY</p>				
SIZE	CODE	IDENT. NO.	DWG. NO.	ISSUE
C	82679	MS 5412		Ø
SCALE	1:1			SHEET OF

QTY / UNIT	MODEL USED ON	ASS'Y NO.
1	CAP145 JB	
APPLICATION		
CODE	S401-451	
A		
<p>NOTICE TO PERSONS RECEIVING THIS DRAWING</p> <p>THE TECHNICAL MATERIEL CORPORATION claims proprietary right in the material disclosed hereon. This drawing is issued in confidence for engineering information only and may not be reproduced or used to manufacture anything shown hereon without permission from THE TECHNICAL MATERIEL CORPORATION to the user. This drawing is loaned for mutual assistance and is subject to recall at any time.</p>		

4

3

2

1

MS 4512
Ø

A