

HOLE	DESCRIPTION	REQ
A	SEE DETAIL	12
B	SEE DETAIL	4
C	NO 48 DRILL(.0760)D	3

MACHINING:

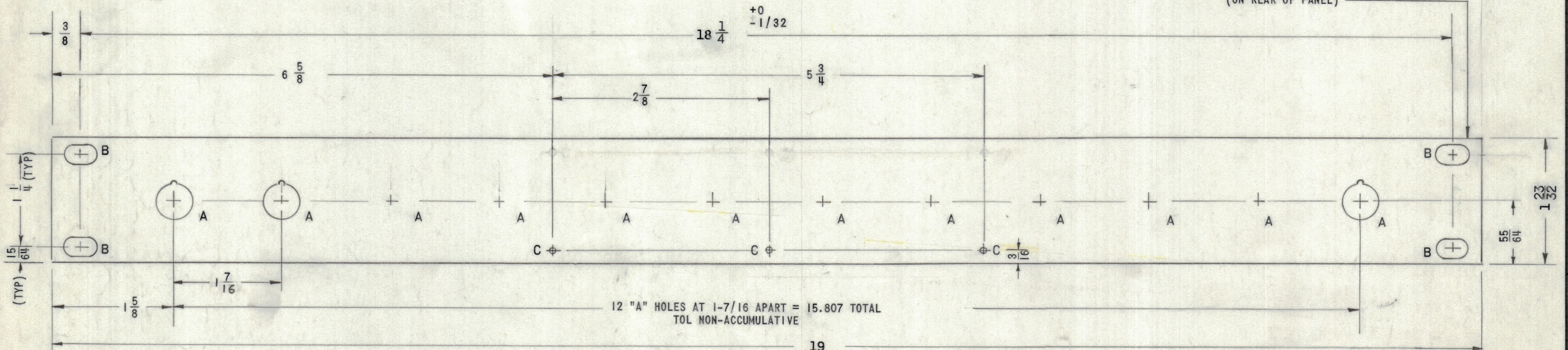
- MILL ALL EDGES.
- HOLES MUST BE DRILLED, UNLESS OTHERWISE SPECIFIED.
- LATERAL BOW OF PANEL MUST BE KEPT TO .031 TOLERANCE.
- PANEL MUST BE FREE OF ALL MACHINING MARKS, GOUGES AND SCRATCHES. IF NECESSARY, SAND FRONT OF PANEL WITH NO. 120 GRIT SANDPAPER.

FINISH NOTES:

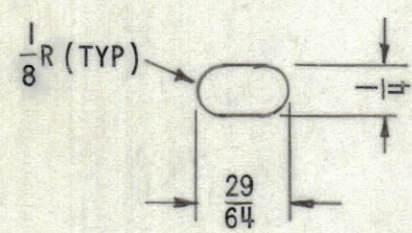
- S404 - IRIDITE 14-2 AL-COAT.
 - S114 - ZINC CHROMATE PRIMER } FRONT AND
 - S115 - SMOOTH GRAY ENAMEL } EDGES ONLY
- OR
PRIME AND PAINT PER CUSTOMER'S SPECIFICATIONS

REVISIONS						
ZONE	LTR	DESCRIPTION	DATE	E.M.N.NO	DRAFT	CHKD
	X	EXPERIMENTAL RELEASE				
	Ø	ORIGINAL RELEASE FOR PRODUCTION	4/1/69		RG	JW

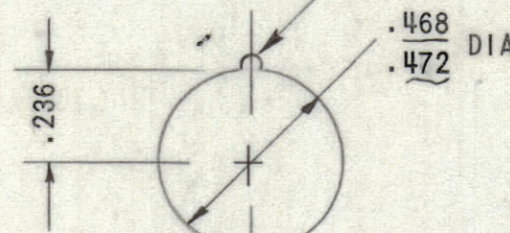
MARK TMC P/N 1/8 HIGH GOTHIC
W/LATEST REVISION LETTER
(ON REAR OF PANEL)



FRONT VIEW SHOWN



DETAIL "B"
(4 REQ)



DETAIL "A"
(12 REQ)

REF: LD2349

QTY. REQ.	ITEM	PART NO.	DESCRIPTION	SYMBOL
	S. DE MARCO LIST OF MATERIAL			
UNLESS OTHERWISE SPECIFIED DIMENSIONS ARE IN INCHES AND INCLUDE CHEMICALLY APPLIED OR PLATED FINISHES		FINAL APPROVAL <i>S. De Marco</i> SPM MECH. DES. <i>R. Uzzo</i>	DATE 4/1/69 DATE 3-31-69	THE TECHNICAL MATERIEL CORP. MAMARONECK, NEW YORK
TOLERANCES ON		ELECT. DES.	DATE	
DECIMALS .X ± .05 .XX ± .01 .XXX ± .005		CHECKED <i>J. De Marco</i>	DATE 3/15/69	
FRACTIONS ± 1/64 ANGLES ± 0° -30'		DRAWN <i>GE</i>	DATE 3/14/69	
MATERIAL 3/16 ALUMINUM 2024-T3		SIZE CODE IDENT.NO. DWG NO.		ISSUE
FINISH SEE NOTES		C 82679 MS 5460		Ø
SCALE			SHEET	OF

I	RSSA-GYA	ASS'Y NO.
QTY / UNIT	MODEL USED ON	
APPLICATION		
CODE		
NOTICE TO PERSONS RECEIVING THIS DRAWING		
THE TECHNICAL MATERIEL CORPORATION claims proprietary right in the material disclosed hereon. This drawing is issued in confidence for engineering information only and may not be reproduced or used to manufacture anything shown hereon without permission from THE TECHNICAL MATERIEL CORPORATION to the user. This drawing is loaned for mutual assistance and is subject to recall at any time.		

MS 5460