

4

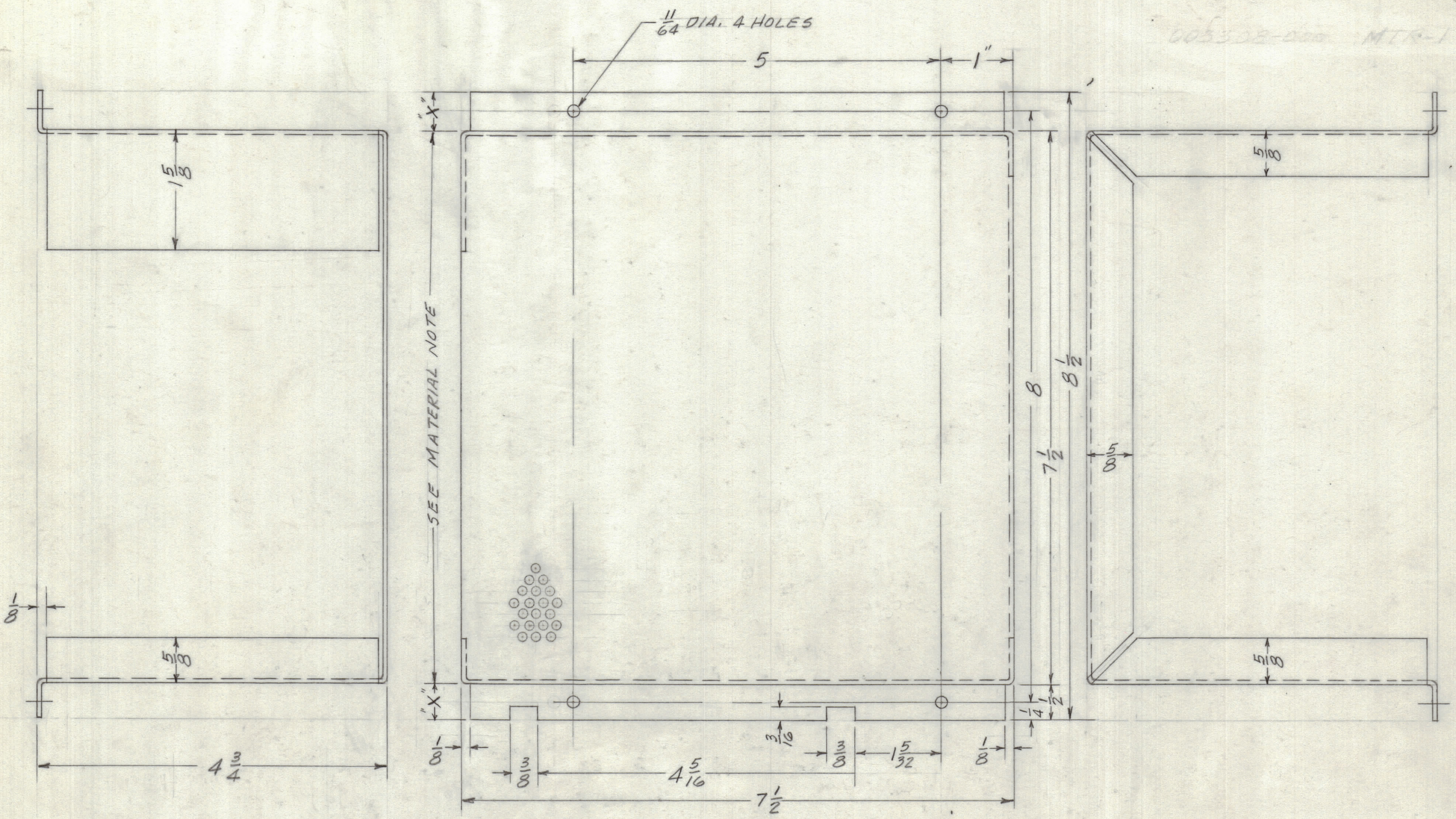
3

2

1

REVISIONS						
ZONE	LTR	DESCRIPTION	DATE	E.M.N.NO	DRAFT	CHKD APPD
	Ø	ORIGINAL RELEASE FOR PRODUCTION	8/8/69		CU	

605328-000 MTR-1



SEE MATERIAL NOTE

NOTE:  
 MATERIAL - .050 ALUM. 5052H32  
 PERFORATED 1/8 DIA. ON 3/16 CENTERS  
 EXCEPT 1/2 FLANGES MARKED "X"

1	MTRM-150	
QTY / UNIT	MODEL USED ON	ASS'Y NO.
APPLICATION		
	CODE	
NOTICE TO PERSONS RECEIVING THIS DRAWING		
THE TECHNICAL MATERIEL CORPORATION claims proprietary right in the material disclosed hereon. This drawing is issued in confidence for engineering information only and may not be reproduced or used to manufacture anything shown hereon without permission from THE TECHNICAL MATERIEL CORPORATION to the user. This drawing is loaned for mutual assistance and is subject to recall at any time.		

UNLESS OTHERWISE SPECIFIED DIMENSIONS ARE IN INCHES AND INCLUDE CHEMICALLY APPLIED OR PLATED FINISHES	
TOLERANCES ON	
DECIMALS	FRACTIONS
.X ± .05	± 1/64
.XX ± .01	ANGLES
.XXX ± .005	± 0° -30'
MATERIAL	
SEE NOTE	
FINISH	
5404 YEL. IRIDITE	

QTY. REQ.	ITEM	PART NO.	DESCRIPTION	SYMBOL		
	POSE		LIST OF MATERIAL SK 3308 MS 35			
	FINAL APPROVAL	DATE	<b>THE TECHNICAL MATERIEL CORP.</b> MAMARONECK, NEW YORK  <b>GUARD</b>			
	MECH. DES.	DATE				
	ELECT. DES.	DATE				
	CHECKED	DATE				
	DRAWN	DATE				
			SIZE	CODE IDENT. NO.	DWG. NO.	ISSUE
			C	82679	MS 5474	Ø
			SCALE		SHEET	OF

4

3

2

1